

**KENT COUNTY REMONUMENTATION  
LAND CORNER RECORDATION CERTIFICATE  
Filing Requirement of Act 74, Mich. P.A. 1970**

STATE OF MICHIGAN  
COUNTY OF KENT  
RECEIVED FOR RECORD  
93 OCT -4 PM 1:53

For corners in

Kent (County)	Located In: Spencer Township	Corner Code #
1. Public Land Survey	T 10N R 9W	L-4 (Cen. Sec 12)
	T _____ R _____	_____
	T _____ R _____	_____
	T _____ R _____	_____
2. Property Controlling in Section	S _____ T _____ R _____	_____
	S _____ T _____ R _____	_____
3. Miscellaneous Property in Sec.	S _____ T _____ R _____	_____
	S _____ T _____ R _____	_____

*W. J. Bond*  
REG. OF DEEDS

**6846**

Register of Deeds Stamp & File Number

4. Lot No. \_\_\_\_\_, Recorded Plat \_\_\_\_\_  
5. Private Claims \_\_\_\_\_

	A	B	C	D	E	F	G	H	I	J	K	L	M
2	6	5	4	3	2								
3													
4	7	8	9	10	11								
5													
6	18	17	16	15	14	13							
7													
8	19	20	21	22	23	24							
9													
10	30	29	28	27	26	25							
11													
12	31	32	33	34	35	36							
13													

I, Rodney D. Unema, in a field survey on September 7, 19 93, do hereby certify that under requirements of P.A. 74, Michigan P.A. of 1970, the corner points mentioned in lines 1 and 2 above were in conformance with regulations and rules therefore as required in the current manual of survey instructions of the United States Department of the Interior, Bureau of Land Management or by a decree of a Court of Law and/or that the corner points mentioned in lines 3, 4 and 5 above were in conformance with the rules of the Michigan Board of Land Surveyors or by a Decree of a Court of Law; established, re-established, monumented, re-monumented, recovered, found as expressed below:

**NOTE: Not more than 4 corners, all in the same town and range, may be recorded on this certificate.**

**A. Description of original monument and accessories and/or subsequent restoration:**

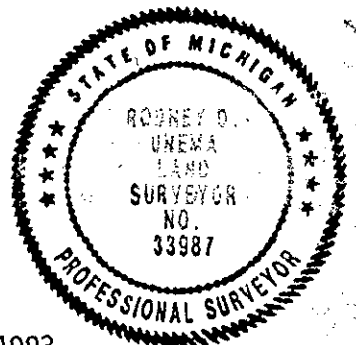
L-4 No recorded information to date  
Williams & Works 1955 reference to found conc. mon. at center Section 12 by witness maps.  
Measurement: Center - W 1/8 cor., SE 1/4 - 1322.68'  
K.C. Witness Map - 1939 - Monument  
8" W. ch. - N-NW 87.0'  
12" Apple - S-SE 47.3'  
12" Oak - S-SW 133.7'  
6" Hickory - W-NW 26.5'

**B. Description of corner evidence found and/or method applied in restoring or reestablishing corner:**

L-4 Found conc. mon. on centerline of Bass Lake Ave.  
1/2 re-rod WEST 33.0'  
Centerline of brush row to East is 5'-6" North  
Mon. is 18.83' South of line between W 1/4 cor. & E 1/4 cor.  
Found PK & tag in SW sde 15" Maple S34°E 41.25'

**C. Description of monument for corner and accessories established to perpetuate locating the position of the corner:**

L-4 Center of Section 12  
Replaced conc. mon. with Std. K.C. Harrison Mon. (4" x 30")  
Top of Mon. is 8" below gravel surface  
Set nail & KC tag in S sde 9" Hickory S88°E 36.02'  
Set nail & KC tag in SW sde 15" Maple S34°E 41.24'  
Set nail & KC tag in NE sde Tw. 8" Oak N45°W 41.34'  
Set nail & KC tag in E sde 30" Oak S16°W 134.18'  
1/2" rebar West 32.99'



Signed by Rodney D. Unema Date September 10, 1993  
Surveyor's Michigan License No. 33987

NOTE: See Survey L 257 P 36 for Survey map.

Received for record by  
 Kent County Register of  
 Deeds, October 4,  
 1993 at 2:00 P.M. In  
 liber 257 page 36

SURVEY OF:  
 SECTION 13, T10N, R9W  
 SPENCER TOWNSHIP, KENT COUNTY, MICHIGAN

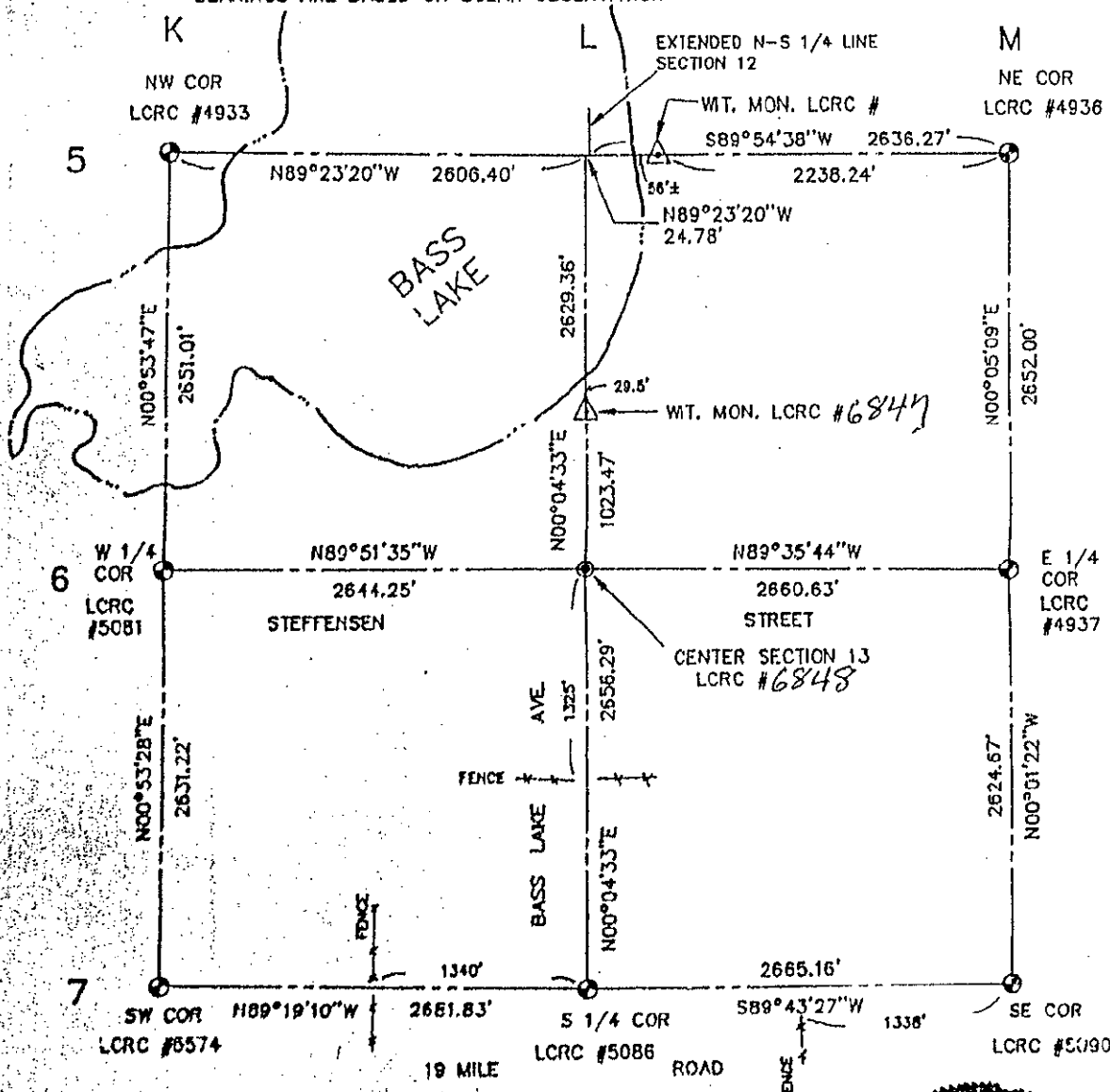


1" = 1000'

LEGEND:

- ⊙ = EXISTING HARRISON MONUMENT
- ⊙ = SET HARRISON MONUMENT AT EXISTING CENTER OF SECTION
- △ = SET HARRISON MONUMENT AS WITNESS MONUMENT

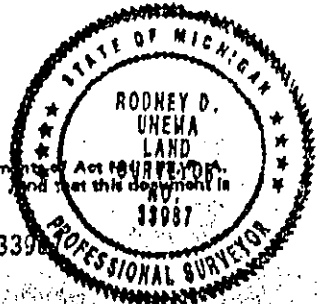
BEARINGS ARE BASED ON SOLAR OBSERVATION



**SURVEYOR'S CERTIFICATE**

I hereby certify that this survey has been prepared in conformance with the requirements of Act 104 of 1975, and of Act 290, P. A. 1973, and that the survey error of closure is 1:10,000 and that this document is therefore in proper form for recording at the County Office of Register of Deeds.

*Rodney D. Uehara*  
 R.L.V. No. 33987



- D = Deeded Dimension
- M = Measured Dimension
- P = Platted Dimension
- ⊙ = Set from Plats
- ⊙ = Found from Plats
- ⊙ = Corrected Measurement
- - - = Fence Line

**exxel engineering inc.**  
 4258 CLYDE PARK, S.W. - GRAND RAPIDS, MI 49509-8724  
 PHONE (616) 551-3600  
 File No. 9311898 Date: September 28, 1993