

MAY 22 2000

KENT COUNTY REMONUMENTATION

\$7.00
\$2.00

SECTION

LAND CORNER RECORDATION CERTIFICATE
Filing Requirement of Act 74, Mich. P.A. 1970

For corners in

KENT COUNTY

(County)

Located In:

Corner Code #

1. Public Land Survey

~~T 10N R 11W~~ M-7 Solon Twp.
T R Common
T 10N R 10W A-7 Nelson Twp.
T R
S T R
S T R
S T R
S T R

2. Property Controlling in Section

3. Miscellaneous Property in Sec.

4. Lot No. _____, Recorded Plat _____

5. Private Claims _____

REG. OF DEEDS

STATE OF MICHIGAN
COUNTY OF KENT
RECEIVED FOR RECORD
1999 MAR 24 AM 8:00

11116

Register of Deeds Stamp & File Number

I, Kirk Breitels, in a field survey on Feb. 23, 1999 do hereby state that under requirements of P.A. 74, Michigan P.A. of 1970, the corner points mentioned in lines 1 and 2 above were in conformance with regulations and rules therefore as required in the current manual of survey instructions of the United States Department of the Interior, Bureau of Land Management or by a decree of a Court of Law and/or that the corner points mentioned in lines 3, 4 and 5 above were in conformance with the rules of the Michigan Board of Land Surveyors or by a Decree of a Court of Law; established, re-established, monumented, recovered, found as expressed below:

NOTE: Not more than 2 corners, all in the same town and range, may be recorded on this certificate.

	A	B	C	D	E	F	G	H	I	J	K	L	M
1													
2		6		5		4		3		2		1	
3													
4		7		8		9		10		11		12	
5													
6		18		17		16		15		14		13	
7													
8		19		20		21		22		23		24	
9													
10		30		29		28		27		26		25	
11													
12		31		32		33		34		35		36	
13													

A. Description of original monument and accessories and/or subsequent restoration:

M-7 1837	GLO	Brookfield	Set Post
1967	Kent Co. Wits		Boat Spike
1980	LCRC #1416	Hackbardt	Boat Spike
1981	LCRC #2006	Jonker	Set Kent County Monument
1990	LCRC #5595	Marschall	Kent County Monument

P.A. 345 1990 KENT COUNTY
PEER APPROVED 2/25/99
CHAIRMAN Tammy Huber

The position of this corner was previously approved by the Kent County Remonumentation Peer Group, monumented by Robert J. Jonker on 8-20-81 and was recorded per LCRC #2006.

B. Description of corner evidence found and/or method applied in restoring or reestablishing corner:

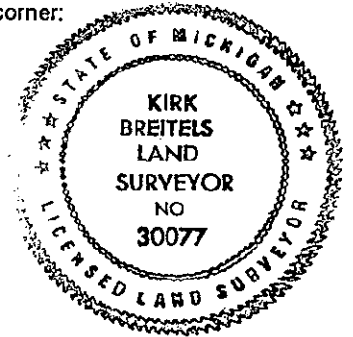
M-7 Found Kent County Monument (Harrison) per witnesses from above LCRC as set by Robert J. Jonker in place of the Solid Rod he found. Said Solid Rod checks with Kent Co. Wit. and LCRC #1416.

LCRC #2006	Nail & Remon. tag T. Pole S71°E 25.02'	LCRC #5595	Nail & Remon. tag 20" Willow N46°E 54.55'
	Nail & Remon. tag 14" Poplar S74°W 40.05'		Nail & Remon. tag 12" Elm N71°E 67.61'
	Nail & Remon. tag 15" Willow N47°E 55.24'		Nail & Remon. tag 8" Willow S87°E 60.71'
	Nail & Remon. tag 6" Elm N36°W 57.67'		Nail & Remon. tag 10" Ash N88°W 64.70'
	C/L B.T. West 2.5'		Nail & Remon. tag 5" Maple N65°W 67.47'

The selected location is accepted by me and is generally accepted by professional surveyors as the best available evidence of the position of the original corner.

C. Description of monument for corner and accessories established to perpetuate locating the position of the corner:

M-7 Standard Kent County Monument	
Nail & KC Remon. tag S. side 12" Elm	N71°E 67.61'
Nail & KC Remon. tag N. side 10" Willow	S87°E 60.75'
Nail & KC Remon. tag S. side 14" Ash	N88°W 64.57'
Nail & KC Remon. tag S. side 6" Maple	N65°W 67.36'
Nail & KC Remon. tag SE side cluster 4" Maples	N55°E 57.46'
Nail & KC Remon. tag NW side 12" Poplar	S55°W 39.56'
C/L N-S asphalt road is West 2.5' ±	



Signed by Kirk Breitels
Surveyor's Michigan License No. 30077

Date 2/25/99