

\$7.00
\$2.00
SURVEY &
REMONUMENTATION

MAY 22 2000

LAND CORNER RECORDATION CERTIFICATE
Filing Requirement of Act 74, Mich. P.A. 1970
KENT COUNTY REMONUMENTATION

STATE OF MICHIGAN
COUNTY OF KENT
RECEIVED FOR RECORD
1999 DEC - 8 AM 10:00
REG. OF DEEDS

For corners in

| Kent (County) | SECTION | Located in: Nelson Township | Corner Code # |
|---------------------------------------|---------|-----------------------------------|---------------|
| 1. Public Land Survey | T 10N | R 10W | E-13 |
| | T | R | |
| | T | R | |
| | T | R | |
| 2. Property Controlling in Section | S | T | R |
| | S | T | R |
| 3. Miscellaneous Property in Sec. | S | T | R |
| | S | T | R |

11516

Register of Deeds Stamp & File Number

4. Lot No. _____, Recorded Plat _____
5. Private Claims _____

I, Randy Kolehouse, in a field survey on January 26 19 99, do hereby certify that under requirements of P.A. 74 Michigan P.A. of 1970, the corner points mentioned in lines 1 and 2 above were in conformance with regulations and rules therefore as required in the current manual of survey instructions of the United States Department of the Interior, Bureau of Land Management or by a decree of a Court of Law and/or that the corner points mentioned in lines 3, 4 and 5 above were in conformance with the rules of the Michigan Board of Land Surveyors or by a Decree of a Court of Law; established, re-established, monumented, re-monumented, recovered, found as expressed below:

NOTE: Not more than 4 corners, all in the same town and range, may be recorded on this certificate.

A. Description of original monument and accessories and/or subsequent restoration:

| E-13 | 1837 | G.L.O. Notes | Cathcart | Set Post |
|------|------|----------------|---------------------|---------------------------------------|
| | 1974 | Witness Map | K.C. Surveyor | 2" Pinched Iron |
| | 1982 | L.C.R.C. #2687 | Glen Hackbardt | 1/2" Rod |
| | 1982 | L.C.R.C. #3096 | Jonker Land Surveys | Fnd. 2" Flat Iron / Set K.C. Monument |
| | 1993 | L.C.R.C. #6695 | John Bueche | K.C. Monument |

Note: This corner is not common with E-1, T9N, R10W.

This corner was originally approved by the Kent County Remonumentation Peer Group and monumented by Rob Jonker on 8/30/82 and was recorded per L.C.R.C. #3096.

B. Description of corner evidence found and/or method applied in restoring or reestablishing corner:

E-13 Found a Standard Kent County Monument on the C/L of Shaner Avenue (bit.) running North, 14' ± West of the C/L of Shaner Avenue (bit.) running South, and 4' ± South of 16 Mile Road (gravel) running East and (bit.) running West per L.C.R.C.'s #3096 and #6695 as set by Rob Jonker in place of a 2" flat iron he found which checked L.C.R.C. #2687 and the K.C. Surveyor's records.

L.C.R.C. #3096

L.C.R.C. #6695

P.K. nail on SW side 18" Cedar N40°W 66.93'
1" iron East, 47.54'
SW cor. brick house S35°W 110.41'
On C/L extended from the North
C/L "X" is 14'E m/l

PK nail in SW side 20" Cedar N 40° W 66.90' (m. 66.89')
NE cor. brick hse. S 35° W 110.41' (m. 110.38')
Nail & K.C. Remon. Tag in S side 8" Ash N 70° E 92.94' (m. 92.89')
Nail & K.C. Remon. Tag in N side 16" Maple S 75° E 107.53' (m. 107.54')
Nail & K.C. Remon. Tag in W side dbl. 14" Maple S 40° E 100.16' (m. 100.20')
SE cor. brick hse. S 25° W 132.29' (m. 132.41')
K.C. Mon. (NE 5, 9-10) East 47.61'
C/L bit. N-S, East 14'+/-
C/L bit.-gravel E-W, N 4'+/-
On C/L bit. North

The selected location is accepted by me and is generally accepted by professional surveyors as the best available evidence of the position of the original corner.

C. Description of monument for corner and accessories established to perpetuate locating the position of the corner:

E-13 Standard Kent County Monument

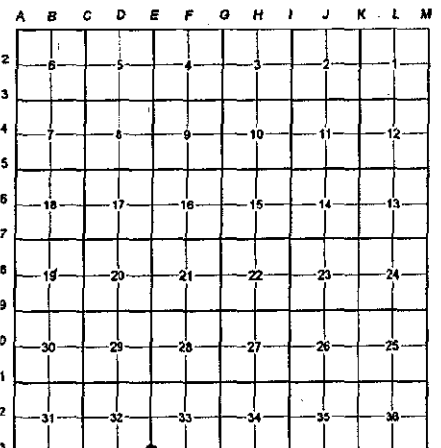
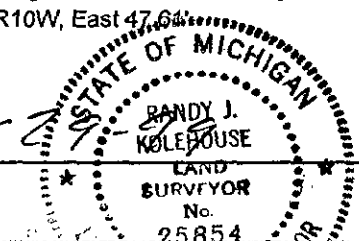
NE cor. brick hse. S 35° W 110.38'
SE cor. brick hse. S 25° W 132.41'
Nail & K.C. remon. tag on SW side 20" Cedar N 40° W 66.89'
Nail & K.C. remon. tag on S side 10" Ash N 70° E 92.89'
Nail & K.C. remon. tag on N side 16" Maple S 75° E 107.54'
Nail & K.C. remon. tag on S side twin 14" Maple S 40° E 100.20'

On C/L of bit. road running N
C/L of bit. road running S, East 14' ±
C/L of gravel road running E and bit. road running W, North 4'
K.C. Mon., E-1, T9N, R10W, East 47.61'

Signed by Randy J. Kolehouse Date 10-27-99

WILLIAMS & WORKS

Surveyor's Michigan License No. 25854



P.A. 345 1990 KENT COUNTY
PEER APPROVED 10/28/99
CHAIRMAN Randy Kolehouse