

MAY 22 2000

\$7.00
\$2.00

KENT COUNTY REMONUMENTATION

SECTION

LAND CORNER RECORDATION CERTIFICATE
Filing Requirement of Act 74, Mich. P.A. 1970

For corners in

KENT COUNTY

(County)

Located in:

Corner Code #

Tyrone Twp.

1. Public Land Survey

T10N R12W M-3

T R Common with

T10N R11W A-3 Solon

T R

2. Property Controlling
in Section

S T R

S T R

3. Miscellaneous
Property in Sec.

S T R

S T R

4. Lot No. _____, Recorded Plat _____

5. Private Claims _____

I, Kirk Breitels, in a field survey on Jan. 21, 1999 do hereby state that under requirements of P.A. 74, Michigan P.A. of 1970, the corner points mentioned in lines 1 and 2 above were in conformance with regulations and rules therefore as required in the current manual of survey instructions of the United States Department of the Interior, Bureau of Land Management or by a decree of a Court of Law and/or that the corner points mentioned in lines 3, 4 and 5 above were in conformance with the rules of the Michigan Board of Land Surveyors or by a Decree of a Court of Law; established, re-established, monumented, recovered, found as expressed below:

NOTE: Not more than 2 corners, all in the same town and range, may be recorded on this certificate.

1	A	B	C	D	E	F	G	H	I	J	K	L	M
2		6		5		4		3		2		1	
3													
4		7		8		9		10		11		12	
5													
6		10		17		16		15		14		13	
7													
8		19		20		21		22		23		24	
9													
10		30		29		28		27		26		25	
11													
12		31		32		33		34		35		36	
13													

A. Description of original monument and accessories and/or subsequent restoration:

M-3 1837	GLO	Brookfield	Set Post
1938	Kent Co. Wits		Square Iron
1986	LCRC #4450	Kolehouse	Set Kent County Monument
1991	LCRC #5734	Bucche	Kent County Monument
1991	LCRC #6039	Byl	Kent County Monument

P.A. 345 1990 KENT COUNTY

PEER APPROVED 2/25/99
CHAIRMAN Randy J. Kolehouse

The position of this corner was previously approved by the Kent County Remonumentation Peer Group, monumented by Randy J. Kolehouse on 4-5-86 and was recorded per LCRC #4450.

B. Description of corner evidence found and/or method applied in restoring or reestablishing corner:

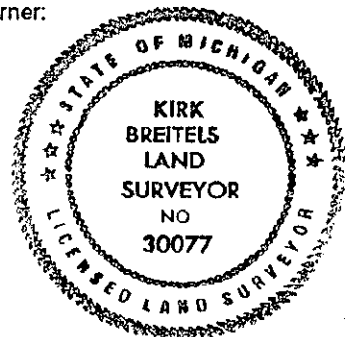
M-3 Found Kent County Monument (Harrison) per witnesses from above LCRC as set by Randy J. Kolehouse in place of the 1" Iron Pipe he found. Said Iron Pipe checks with Kent Co. Wit.

LCRC #4450 & #5734	LCRC #6039
Nail & Remon. tag Tw. 16" Oak S40°W 19.18'	Nail & Remon. tag Tw. 18" Oak S40°W 19.10'
Nail & Remon. tag 6" Hickory S10°E 12.91'	Nail & Remon. tag 8" Hickory S10°E 12.89'
Nail & Remon. tag P. Pole N40°E 48.89'	Nail & Remon. tag P. Pole N40°E 48.87'
"X" on Large Stone N15°W 23.70'	"X" in top of Large Stone N15°W 23.67'
1" x 1/2" Iron North 3.5'	Nail & Remon. tag 8" Poplar S55°E 49.72'

The selected location is accepted by me and is generally accepted by professional surveyors as the best available evidence of the position of the original corner.

C. Description of monument for corner and accessories established to perpetuate locating the position of the corner:

M-3 Standard Kent County Monument	
Nail & KC Remon. tag NW side Twin 20" Oak	S40°W 19.10'
Nail & KC Remon. tag E. side 8" Hickory	S10°E 12.89'
Nail & KC Remon. tag NW side P. Pole	N40°E 48.89'
"X" on top of Large Stone	N15°W 23.70'
Nail & KC Remon. tag N. side 12" Poplar	S55°E 49.78'
1/2" x 1" Iron Bar	North 3.30'
C/L E-W gravel road is North 2' ±	



Signed by Kirk Breitels

Date 2/25/99

Surveyor's Michigan License No. 30077