

SURVEY &
REMONUMENTATION

SEP 18 1995

\$7.00
\$2.00 COMMISSION

KENT COUNTY REMONUMENTATION

LAND CORNER RECORDATION CERTIFICATE
Filing Requirement of Act 74, Mich. P.A. 1970

STATE OF MICHIGAN
COUNTY OF KENT
RECEIVED FOR RECORD

95 MAY 12 AM 10:43

Lewis J. Bond
REG. OF DEEDS

For corners in
KENT COUNTY
(County)

Located In: Corner Code #

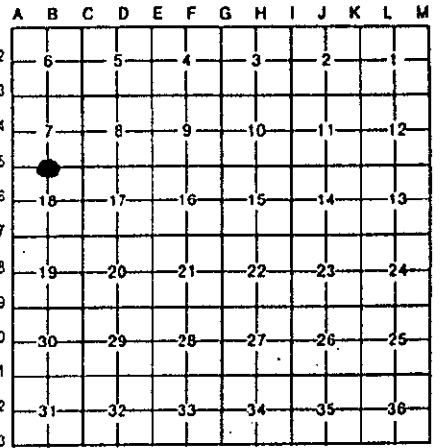
- | | | | | | |
|---------------------------------------|---|-----|---|-----|-----|
| 1. Public Land Survey | T | 10N | R | 11W | B-5 |
| | T | | R | | |
| | T | | R | | |
| | T | | R | | |
| 2. Property Controlling in Section | S | | T | R | |
| | S | | T | R | |
| 3. Miscellaneous Property in Sec. | S | | T | R | |
| | S | | T | R | |
| 4. Lot No. _____, Recorded Plat _____ | | | | | |
| 5. Private Claims _____ | | | | | |

8358

Register of Deeds Stamp & File Number

I, Kirk Breitels, in a field survey on March 15, 1995, do hereby certify that under requirements of P.A. 74, Michigan P.A. of 1970, the corner points mentioned in lines 1 and 2 above were in conformance with regulations and rules therefore as required in the current manual of survey instructions of the United States Department of the Interior, Bureau of Land Management or by a decree of a Court of Law and/or that the corner points mentioned in lines 3, 4 and 5 above were in conformance with the rules of the Michigan Board of Land Surveyors or by a Decree of a Court of Law; established, re-established, monumented, re-monumented, recovered, found as expressed below:

NOTE: Not more than 4 corners, all in the same town and range, may be recorded on this certificate.



A. Description of original monument and accessories and/or subsequent restoration:

B-5	1837	GLO	Cathcart	Set Post
		Kent Co. Wit.		Iron
	1974	LCRC #717	VanKooten	Set Iron from old witnesses
	1981	LCRC #2101	Jonker	Set Kent County Monument

P.A. 345 1990 KENT COUNTY
PEER APPROVED 4/27/95
CHAIRMAN *Randy Hubert*

The position of this corner was previously approved by the Kent County Remonumentation Peer Group, monumented by Robert J. Jonker on 9/8/81 and was recorded per LCRC #2101.

B. Description of corner evidence found and/or method applied in restoring or reestablishing corner:

B-5 Found standard Kent Co. Mon. (Harrison) per witnesses from above LCRC as set by Robert J. Jonker in place of the "T" Iron he found. Said "T" Iron checks with Kent Co. Wit. and LCRC #717.
LCRC #2101

Remon. tag W. side 6" Sassafras	S04°W	36.52'
Remon. tag SW side P. Pole	N28°W	44.37'
Face at base of steel fence post	S77°E	101.35'
C/L top hole on W. side steel fence post	N08°E	32.64'
C/L B.T. - South - 1' m/l		
C/L N-S power line - East 19.5' m/l		

The selected location is accepted by me and is generally accepted by professional surveyors as the best available evidence of the position of the original corner.

C. Description of monument for corner and accessories established to perpetuate locating the position of the corner:

B-5 Standard Kent County Monument		
New Nail & KC Remon. tag W. side 10" Sassafras	S04°W	36.60'
New Nail & KC Remon. tag SW side P. Pole	N28°W	44.28'
C/L top hole on W. side steel fence post	N08°E	32.64'
Set Nail & KC Remon. tag SE side 4" Poplar	S50°W	42.53'
Rerod and cap (Roosien) - South 33.01'		
C/L B.T. - South - 2' m/l		
C/L N-S power line - East 19.5' m/l		



Signed by *Kirk Breitels*
Surveyor's Michigan License No. 30077

Date 4/20/95