

MAY 22 2000

\$7.00
\$2.00

SECTION

KENT COUNTY REMONUMENTATION

LAND CORNER RECORDATION CERTIFICATE
Filing Requirement of Act 74, Mich. P.A. 1970

REG. OF DEEDS

[Signature]

STATE OF MICHIGAN
COUNTY OF KENT
RECEIVED FOR RECORD
1999 DEC 15 AM 8:55

For corners in

KENT COUNTY
(County)

Located in:

Corner Code #

1. Public Land Survey

T 10 N R 11 W

Solon Twp.
B-6

2. Property Controlling in Section

S

T R

3. Miscellaneous Property in Sec.

S

T R

S

T R

S

T R

11584

Register of Deeds Stamp & File Number

4. Lot No. _____, Recorded Plat _____

5. Private Claims _____

I, Kirk Breitels, in a field survey on Oct. 6, 1999 do hereby state that under requirements of P.A. 74, Michigan P.A. of 1970, the corner points mentioned in lines 1 and 2 above were in conformance with regulations and rules therefore as required in the current manual of survey instructions of the United States Department of the Interior, Bureau of Land Management or by a decree of a Court of Law and/or Board of Land Surveyors or by a Decree of a Court of Law; established, re-established, monumented, recovered, found as expressed below.

NOTE: Not more than 2 corners, all in the same town and range, may be recorded on this certificate.

	A	B	C	D	E	F	G	H	I	J	K	L	M
1													
2	6		5		4		3		2		1		
3													
4	7		8		9		10		11		12		
5													
6	10		17		16		15		14		13		
7													
8	19		20		21		22		23		24		
9													
10	30		29		28		27		26		25		
11													
12	31		32		33		34		35		36		
13													

A. Description of original monument and accessories and/or subsequent restoration:

B-6 1837 GLO Williams & Works Kent Co. Wits Not Set No information No information

P.A. 345 1990 KENT COUNTY
PEER APPROVED 10/28/97
CHAIRMAN *Harry Huber*

B. Description of corner evidence found and/or method applied in restoring or reestablishing corner:

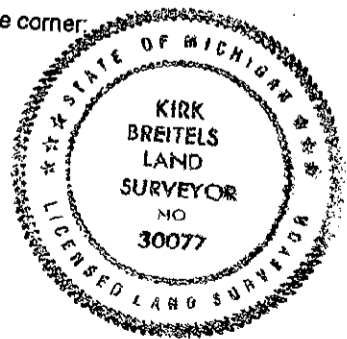
B-6 Established Intersection of 1/4 lines - position being on N-S Consumers Energy tower swath through woods - found it be on remains of fence N-S with fence corner post lying on ground.

Section breakdown measurements agree ± with JCK plat "Wildwood Valley" in NE 1/4.

The Intersection of 1/4 lines is accepted by me and is generally accepted by professional surveyors as the best available evidence of the position of the corner.

C. Description of monument for corner and accessories established to perpetuate locating the position of the corner:

B-6 Set Standard Kent County Monument at the Intersection of 1/4 lines.
Nail & KC Remon. tag NW side 15" Poplar S60°W 69.46'
Nail & KC Remon. tag NE side 12" Poplar N75°W 53.96'
Nail & KC Remon. tag S. side 8" Oak N80°E 106.98'
Nail & KC Remon. tag SW side 30" Oak S55°E 156.10'
Monument is 45' ± East of West edge of swath through woods.



Signed by: *Kirk Breitels*
Surveyor's Michigan License No. 30077

Date 12/6/99