

\$7.00
\$2.00 SEP 18 1995

KENT COUNTY REMONUMENTATION

STATE OF MICHIGAN
COUNTY OF KENT
RECEIVED FOR RECORD

COMMISSION

LAND CORNER RECORDATION CERTIFICATE
Filing Requirement of Act 74, Mich. P.A. 1970

95 MAY 12 AM 10:44

For corners in
KENT COUNTY

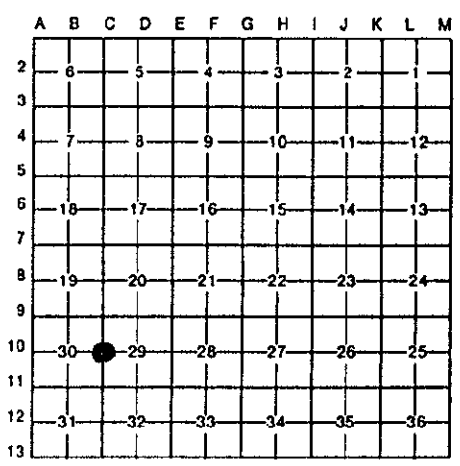
(County)	Located In:	Corner Code #
1. Public Land Survey	T 10N R 11W	C-10
	T _____ R _____	_____
	T _____ R _____	_____
	T _____ R _____	_____
2. Property Controlling in Section	S _____ T _____ R _____	_____
	S _____ T _____ R _____	_____
3. Miscellaneous Property in Sec.	S _____ T _____ R _____	_____
	S _____ T _____ R _____	_____
4. Lot No. _____, Recorded Plat _____		
5. Private Claims _____		

W. J. Jonker
REG. OF DEEDS

8371

Register of Deeds Stamp & File Number

I, Kirk Breitels, in a field survey on Feb. 21, 19 95, do hereby certify that under requirements of P.A. 74, Michigan P.A. of 1970, the corner points mentioned in lines 1 and 2 above were in conformance with regulations and rules therefore as required in the current manual of survey instructions of the United States Department of the Interior, Bureau of Land Management or by a decree of a Court of Law and/or that the corner points mentioned in lines 3, 4 and 5 above were in conformance with the rules of the Michigan Board of Land Surveyors or by a Decree of a Court of Law; established, re-established, monumented, re-monumented, recovered, found as expressed below:



NOTE: Not more than 4 corners, all in the same town and range, may be recorded on this certificate.

A. Description of original monument and accessories and/or subsequent restoration:

C-10	1837	GLO	Cathcart	Set Post
	1937	Kent Co. Wit.		1" Iron & Stone
	1979	LCRC #1376	VanKooten	Set Capped Iron from witnesses
	1981	LCRC #2115	Jonker	Set Kent County Monument

The position of this corner was previously approved by the Kent County Remonumentation Peer Group, monumented by Robert J. Jonker on 9/9/81 and was recorded per LCRC #2115.

B. Description of corner evidence found and/or method applied in restoring or reestablishing corner:

C-10 Found standard Kent Co. Mon. (Harrison) per witnesses from above LCRC as set by Robert J. Jonker in place of the Capped Iron he found over a pointed stone. Said Iron and stone check with Kent Co. Wit. and LCRC #1376.

LCRC #2115

Remon. tag N. side	30" Oak	S73°W	81.18'
Remon. tag W. side	10" Sassafras	North	39.64'
Remon. tag E. side	gatepost	N35°E	52.35'
Remon. tag N. side	30" W. Cherry	S75°E	125.54'

On C/L E-W B.T.; 10' m/l East of C/L gravel to South

P.A. 345 1990 KENT COUNTY
PEER APPROVED 4/27/95
CHAIRMAN *Hans Huber*

The selected location is accepted by me and is generally accepted by professional surveyors as the best available evidence of the position of the original corner.

C. Description of monument for corner and accessories established to perpetuate locating the position of the corner:

C-10 Standard Kent County Monument

New Nail & KC Remon. tag N. side	36" Oak	S73°W	81.24'
Nail & KC Remon. tag W. side	14" Sassafras	North	39.66'
Nail & KC Remon. tag E. side	gatepost	N35°E	52.35'
New Nail & KC Remon. tag N. side	36" W. Cherry	S75°E	125.37'

On C/L E-W B.T.; 10' m/l East of C/L gravel to South



Signed by *Kirk Breitels*

Date 4/20/95

Surveyor's Michigan License No. 30077