

\$7.00 SEP 18 1995
\$2.00 COMMISSION

KENT COUNTY REMONUMENTATION

STATE OF MICHIGAN
COUNTY OF KENT
RECEIVED FOR RECORD

LAND CORNER RECORDATION CERTIFICATE
Filing Requirement of Act 74, Mich. P.A. 1970

95 MAY 12 AM 10:44

Luis J. David
REG. OF DEEDS

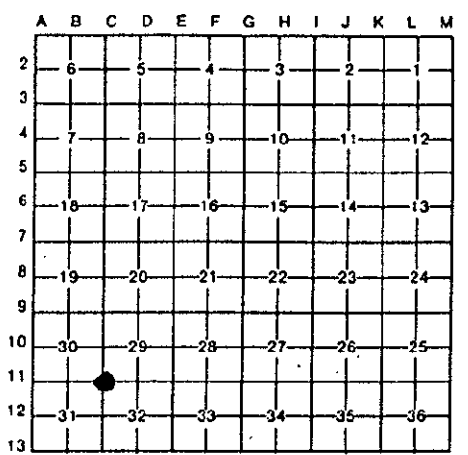
For corners in
KENT COUNTY

(County)	Located In:	Corner Code #
1. Public Land Survey	T 10N R 11W	C-11
	T _____ R _____	_____
	T _____ R _____	_____
	T _____ R _____	_____
2. Property Controlling in Section	S _____ T _____ R _____	_____
	S _____ T _____ R _____	_____
3. Miscellaneous Property in Sec.	S _____ T _____ R _____	_____
	S _____ T _____ R _____	_____
4. Lot No. _____, Recorded Plat _____		
5. Private Claims _____		

8372

Register of Deeds Stamp & File Number

I, Kirk Breitels, in a field survey on March 10, 19 95, do hereby certify that under requirements of P.A. 74, Michigan P.A. of 1970, the corner points mentioned in lines 1 and 2 above were in conformance with regulations and rules therefore as required in the current manual of survey instructions of the United States Department of the Interior, Bureau of Land Management or by a decree of a Court of Law and/or that the corner points mentioned in lines 3, 4 and 5 above were in conformance with the rules of the Michigan Board of Land Surveyors or by a Decree of a Court of Law, established, re-established, monumented, re-monumented, recovered, found as expressed below:



NOTE: Not more than 4 corners, all in the same town and range, may be recorded on this certificate.

A. Description of original monument and accessories and/or subsequent restoration:

C-11	1837	GLO	Cathcart	Set Post
	1973	LCRC #565	VanKooten	1 1/2" Axle Shaft
	1981	LCRC #2109	Jonker	Set Kent County Monument in mon. box
	1994		Glaza	Witness Kent Co. Mon. before const.

P.A. 345 1990 KENT COUNTY
PEER APPROVED 9/27/99
CHAIRMAN *Harry Stuber*

The position of this corner was previously approved by the Kent County Remonumentation Peer Group, monumented by Robert J. Jonker on 9/9/81 and was recorded per LCRC #2109.

B. Description of corner evidence found and/or method applied in restoring or reestablishing corner:

C-11 Found empty mon. box (after road const.) Set standard Kent Co. Mon. (Harrison) in mon. box per witnesses from Glaza and from above LCRC as set by Robert J. Jonker in place of the Axle Shaft he found. Said Axle Shaft checks with LCRC #565.
LCRC #2109

Remon. tag NW side corner fence post	N28°E	44.41'	(44.20' - Glaza)
Remon. tag NE side Power Pole	N28°W	65.02'	(65.02' - Glaza)
Set "X" on W. end conc. culvert	S25°W	67.46'	(67.46' - Glaza)
NW corner bldg.	S45°E	122.97'	
On C/L "X" B.T. m/l			
Remon. tag & nail W. side Power Pole	S20°E	131.29'	(Glaza)

The selected location is accepted by me and is generally accepted by professional surveyors as the best available evidence of the position of the original corner.

C. Description of monument for corner and accessories established to perpetuate locating the position of the corner:

C-11 Standard Kent County Monument			
Remon. tag & nail W. side corner fence post	N28°E	44.25'	
Remon. tag & nail NE side Power Pole	N28°W	65.02'	
"X" on W. end conc. culvert	S25°W	67.46'	
NW corner bldg.	S45°E	123.06'	
Remon. tag & nail W. side Power Pole	S20°E	131.29'	
On C/L "X" B.T. m/l			



Signed by *Kirk Breitels* Date 4/20/95
Surveyor's Michigan License No. 30077