

SEP 18 1905

\$7.00  
\$2.00

KENT COUNTY REMONUMENTATION

STATE OF MICHIGAN  
COUNTY OF KENT  
RECEIVED FOR RECORD

LAND CORNER RECORDATION CERTIFICATE  
Filing Requirement of Act 74, Mich. P.A. 1970

95 MAY 12 AM 10:44

For corners in  
KENT COUNTY  
(County)

Located In: Corner Code -#

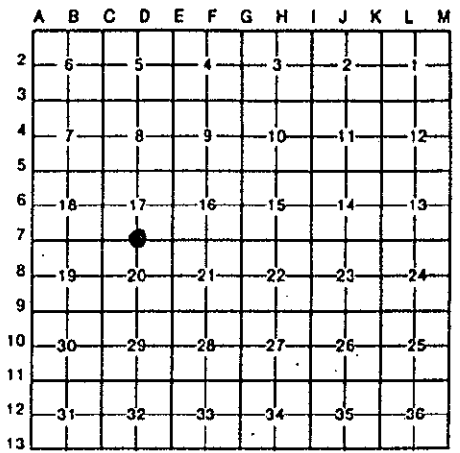
- 1. Public Land Survey T 10N R 11W D-7
- T \_\_\_\_\_ R \_\_\_\_\_
- T \_\_\_\_\_ R \_\_\_\_\_
- T \_\_\_\_\_ R \_\_\_\_\_
- 2. Property Controlling S \_\_\_\_\_ T \_\_\_\_\_ R \_\_\_\_\_
- in Section S \_\_\_\_\_ T \_\_\_\_\_ R \_\_\_\_\_
- 3. Miscellaneous S \_\_\_\_\_ T \_\_\_\_\_ R \_\_\_\_\_
- Property in Sec. S \_\_\_\_\_ T \_\_\_\_\_ R \_\_\_\_\_
- 4. Lot No. \_\_\_\_\_, Recorded Plat \_\_\_\_\_
- 5. Private Claims \_\_\_\_\_

*Lucy Bond*  
REG. OF DEEDS

8377

Register of Deeds Stamp & File Number

I, Kirk Breitels, in a field survey on Feb. 21, 1995, do hereby certify that under requirements of P.A. 74, Michigan P.A. of 1970, the corner points mentioned in lines 1 and 2 above were in conformance with regulations and rules therefore as required in the current manual of survey instructions of the United States Department of the Interior, Bureau of Land Management or by a decree of a Court of Law and/or that the corner points mentioned in lines 3, 4 and 5 above were in conformance with the rules of the Michigan Board of Land Surveyors or by a Decree of a Court of Law; established, re-established, monumented, re-monumented, recovered, found as expressed below:



NOTE: Not more than 4 corners, all in the same town and range, may be recorded on this certificate.

A. Description of original monument and accessories and/or subsequent restoration:

D-7	1837	GLO	Cathcart	Set Post
		Kent Co. Wit.		Iron
	1981	LCRC #2092	Nederveld	Round Iron in mon. box
	1982	LCRC #2903	Jonker	Set Kent County Monument in mon. box

The position of this corner was previously approved by the Kent County Remonumentation Peer Group, monumented by Robert J. Jonker on 6/10/82 and was recorded per LCRC #2903.

B. Description of corner evidence found and/or method applied in restoring or reestablishing corner:

D-7 Found standard Kent Co. Mon. (Harrison) per witnesses from above LCRC as set by Robert J. Jonker in place of the 1/2" Round Iron he found inside a mon. box. Said Iron checks with Kent Co. Wit. and LCRC #2092.

LCRC #2903

- Remon. tag W. side 9" Basswood N10°E 33.04'
- Remon. tag S. side 18" Pine N75°W 120.77'
- Remon. tag S. side P. Pole S65°E 151.8'
- Remon. tag E. side 8" Oak S30°W 96.85'
- C/L E-W pvt. is 1' S.; C/L pvt. to S. is 3' E.
- On line fence & tree row to N.

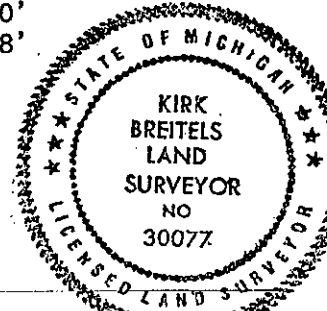
P.A. 345 1990 KENT COUNTY  
PEER APPROVED 4/27/95  
CHAIRMAN *[Signature]*

The selected location is accepted by me and is generally accepted by professional surveyors as the best available evidence of the position of the original corner.

C. Description of monument for corner and accessories established to perpetuate locating the position of the corner:

D-7 Standard Kent County Monument

- New Nail & KC Remon. tag W. side Tri. 10"-20" Basswood N10°E 32.83'
- New Nail & KC Remon. tag S. side 22" Pine N75°W 120.63'
- Nail & KC Remon. tag S. side P. Pole S65°E 151.80'
- New Nail & KC Remon. tag E. side 12" Oak S30°W 96.88'
- C/L E-W pvt. is 1' S.; C/L pvt. to S. is 3' E.
- On line fence & tree row to N.



Signed by *Kirk Breitels*  
Surveyor's Michigan License No. 30077

Date 4/20/95