

\$7.00 SEP 18 1995  
\$2.00 COMMISSION

KENT COUNTY REMONUMENTATION

STATE OF MICHIGAN  
COUNTY OF KENT  
RECEIVED FOR RECORD

LAND CORNER RECORDATION CERTIFICATE  
Filing Requirement of Act 74, Mich. P.A. 1970

95 MAY 12 AM 10:44

For corners in  
KENT COUNTY

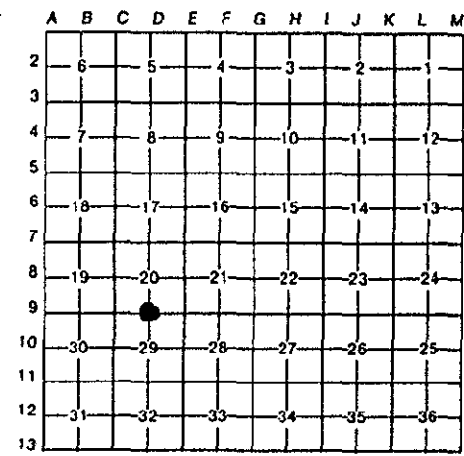
(County)	Located In:	Corner Code #
1. Public Land Survey	T 10N R 11W	D-9
	T _____ R _____	_____
	T _____ R _____	_____
	T _____ R _____	_____
2. Property Controlling in Section	S _____ T _____ R _____	_____
	S _____ T _____ R _____	_____
3. Miscellaneous Property in Sec.	S _____ T _____ R _____	_____
	S _____ T _____ R _____	_____
4. Lot No. _____, Recorded Plat _____		
5. Private Claims _____		

*Lucy Bond*  
REG. OF DEEDS

8378

Register of Deeds Stamp & File Number

I, Kirk Breitels, in a field survey on Feb. 21, 19 95, do hereby certify that under requirements of P.A. 74, Michigan P.A. of 1970, the corner points mentioned in lines 1 and 2 above were in conformance with regulations and rules therefore as required in the current manual of survey instructions of the United States Department of the Interior, Bureau of Land Management or by a decree of a Court of Law and/or that the corner points mentioned in lines 3, 4 and 5 above were in conformance with the rules of the Michigan Board of Land Surveyors or by a Decree of a Court of Law; established, re-established, monumented, re-monumented, recovered, found as expressed below:



NOTE: Not more than 4 corners, all in the same town and range, may be recorded on this certificate.

A. Description of original monument and accessories and/or subsequent restoration:

D-9	1837	GLO	Cathcart	Set Post
		Kent Co. Wit.		Iron
	1979	LCRC #1285	Reda	1/2" Iron
	1981	LCRC #1418	Hackbardt	3/4" Iron
	1981	LCRC #2114	Jonker	Set Kent County Monument

The position of this corner was previously approved by the Kent County Remonumentation Peer Group, monumented by Robert J. Jonker on 9/11/81 and was recorded per LCRC #2114.

B. Description of corner evidence found and/or method applied in restoring or reestablishing corner:

D-9 Found standard Kent Co. Mon. (Harrison) per witnesses from above LCRC as set by Robert J. Jonker in place of the 1/2" Round Iron he found. Said Iron checks with Kent Co. Wit. and LCRC's #1285 & #1418.

LCRC #2114

Remon. tag SE side P. Pole	N60°E	88.44'
Remon. tag NE side 24" Maple	S35°E	68.98'
Remon. tag N. side 9" Pignut	S85°E	110.85'
C/L stop sign	N74°E	56.10'
C/L "X" of B.T. - 3' North		

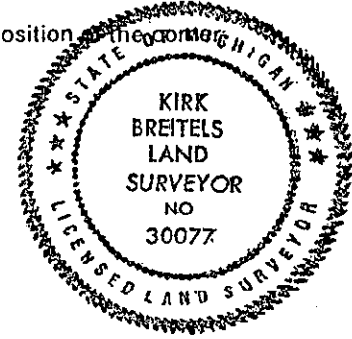
P.A. 345 1990 KENT COUNTY  
PEER APPROVED 4/27/95  
CHAIRMAN *[Signature]*

The selected location is accepted by me and is generally accepted by professional surveyors as the best available evidence of the position of the original corner.

C. Description of monument for corner and accessories established to perpetuate locating the position of the corner:

D-9 Standard Kent County Monument

Nail & KC Remon. tag SE side P. Pole	N60°E	88.44'
New Nail & KC Remon. tag NE side 32" Maple	S35°E	69.03'
Set Nail & KC Remon. tag NE side 8" Elm	N50°W	28.72'
C/L stop sign	N74°E	56.10'
On C/L N-S; C/L East - 3' North m/l		



Signed by *Kirk Breitels*  
Surveyor's Michigan License No. 30077

Date 4/20/95