

SEP 16 1995
\$7.00
\$2.00 COMMISSION

KENT COUNTY REMONUMENTATION
LAND CORNER RECORDATION CERTIFICATE
Filing Requirement of Act 74, Mich. P.A. 1970

95 MAY 12 AM 10:44

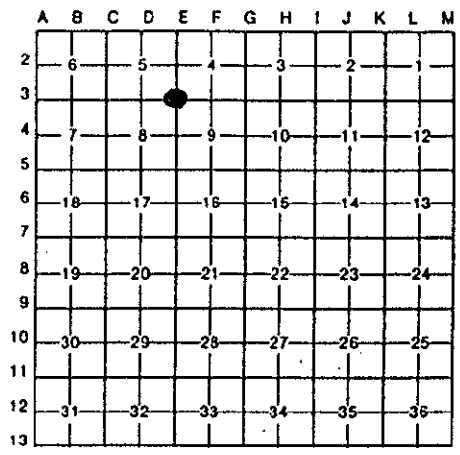
W. J. Jonker
REG. OF DEEDS

For corners in
KENT COUNTY
(County)

	Located In:	Corner Code #
1. Public Land Survey	T <u>10N</u> R <u>11W</u>	<u>E-3</u>
	T _____ R _____	_____
	T _____ R _____	_____
	T _____ R _____	_____
2. Property Controlling in Section	S _____ T _____ R _____	_____
	S _____ T _____ R _____	_____
3. Miscellaneous Property in Sec.	S _____ T _____ R _____	_____
	S _____ T _____ R _____	_____
4. Lot No. _____, Recorded Plat _____		
5. Private Claims _____		

8383

Register of Deeds Stamp & File Number



I, Kirk Breitels, in a field survey on March 15, 19 95, do hereby certify that under requirements of P.A. 74, Michigan P.A. of 1970, the corner points mentioned in lines 1 and 2 above were in conformance with regulations and rules therefore as required in the current manual of survey instructions of the United States Department of the Interior, Bureau of Land Management or by a decree of a Court of Law and/or that the corner points mentioned in lines 3, 4 and 5 above were in conformance with the rules of the Michigan Board of Land Surveyors or by a Decree of a Court of Law; established, re-established, monumented, re-monumented, recovered, found as expressed below:

NOTE: Not more than 4 corners, all in the same town and range, may be recorded on this certificate.

A. Description of original monument and accessories and/or subsequent restoration:

E-3	1837	GLO	Cathcart	Set Post
	1972	Kent Co. Wit.		3/4" Gas Pipe
	1974	LCRC #780	Nederveld	3/4" Iron
	1981	LCRC #2104	Jonker	Set Kent County Monument
	1992	LCRC #6619	Erickson	Rebar and cap "GSH 25844"

The position of this corner was previously approved by the Kent County Remonumentation Peer Group, monumented by Robert J. Jonker on 9/8/81 and was recorded per LCRC #2104.

B. Description of corner evidence found and/or method applied in restoring or reestablishing corner:

E-3 Found Rebar and cap "GSH #25844" per witnesses from LCRC #6619 at the same location as the Kent Co. Mon. set in 1981 by Robert J. Jonker in place of the 1/2" Iron he found. Said Iron checks with Kent Co. Wit. and LCRC #780.

LCRC #2104

Remon. tag W. side 14" Oak	N15°E	125.11'
Remon. tag SW side P. Pole	S70°E	72.35'
Remon. tag W. side 12" Elm	N10°W	68.54'
Remon. tag S. side 6" Poplar	S80°W	87.32'
C/L "X" of B.T. is 1' S. & 3' E.		

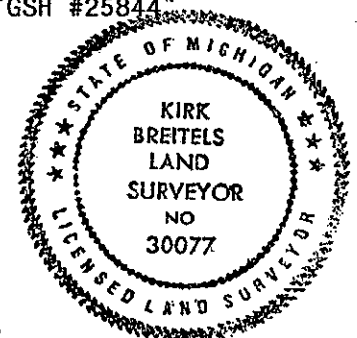
P.A. 3-5 1990 KENT COUNTY
PEER APPROVED 4/27/95
CHAIRMAN *Harry Tubell*

The selected location is accepted by me and is generally accepted by professional surveyors as the best available evidence of the position of the original corner.

C. Description of monument for corner and accessories established to perpetuate locating the position of the corner:

E-3 Set Standard Kent County Monument in place of capped rebar "GSH #25844"

New Nail & KC Remon. tag W. side 20" Oak	N15°E	125.12'
Nail & KC Remon. tag SW side P. Pole	S70°E	72.33'
Set Nail & KC Remon. tag W. side 14" Elm	S20°W	133.01'
Set Nail & KC Remon. tag SW side P. Pole	N50°W	155.38'
Face of sign post	S20°E	46.0'
Face of sign post	N25°W	47.6'
C/L "X" of B.T. is 1' S. & 3' E.		



Signed by *Kirk Breitels*

Date 4/20/95

Surveyor's Michigan License No. 30077