

\$7.00
\$2.00
APR 18 1995
COMMISSION

KENT COUNTY REMONUMENTATION

STATE OF MICHIGAN
COUNTY OF KENT
RECEIVED FOR RECORD

LAND CORNER RECORDATION CERTIFICATE
Filing Requirement of Act 74, Mich. P.A. 1970

95 MAY 12 AM 10:44

For corners in
KENT COUNTY

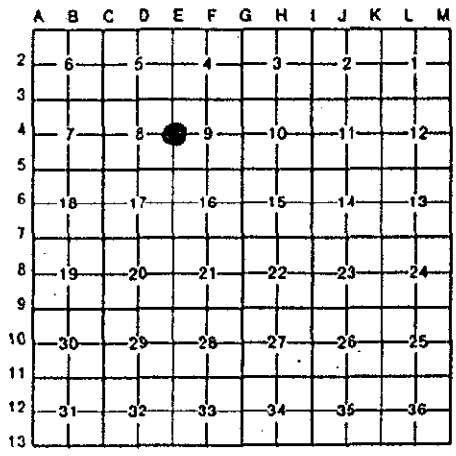
(County)	Located In:	Corner Code #:
1. Public Land Survey	T <u>10N</u> R <u>11W</u>	<u>E-4</u>
	T _____ R _____	_____
	T _____ R _____	_____
	T _____ R _____	_____
2. Property Controlling in Section	S _____ T _____ R _____	_____
	S _____ T _____ R _____	_____
3. Miscellaneous Property in Sec.	S _____ T _____ R _____	_____
	S _____ T _____ R _____	_____
4. Lot No. _____, Recorded Plat _____		
5. Private Claims _____		

Tracy Bond
REG. OF DEEDS

8384

Register of Deeds Stamp & File Number

I, Kirk Breitels, in a field survey on March 14, 19 95, do hereby certify that under requirements of P.A. 74, Michigan P.A. of 1970, the corner points mentioned in lines 1 and 2 above were in conformance with regulations and rules therefore as required in the current manual of survey instructions of the United States Department of the Interior, Bureau of Land Management or by a decree of a Court of Law and/or that the corner points mentioned in lines 3, 4 and 5 above were in conformance with the rules of the Michigan Board of Land Surveyors or by a Decree of a Court of Law; established, re-established, monumented, re-monumented, recovered, found as expressed below:



NOTE: Not more than 4 corners, all in the same town and range, may be recorded on this certificate.

A. Description of original monument and accessories and/or subsequent restoration:

E-4	1837	GLO	Cathcart	Set Post
		Kent Co. Wit..		Witnesses given
	1974	LCRC #780	Nederveld	Set "T" Iron
	1981	LCRC #2103	Jonker	Set Kent County Monument

The position of this corner was previously approved by the Kent County Remonumentation Peer Group, monumented by Robert J. Jonker on 9/8/81 and was recorded per LCRC #2103.

B. Description of corner evidence found and/or method applied in restoring or reestablishing corner:

E-4 Found BROKEN AND LEANING standard Kent Co. Mon. (Harrison). Removed and replaced broken Kent Co. Mon. per witnesses from above LCRC as set by Robert J. Jonker in place of the "T" Iron he found. Said "T" Iron checks with LCRC #780 and physical evidence.

LCRC #2103

Remon. tag S. side P. Pole	S80°E	65.15'
Remon. tag N. side 18" Butternut	N20°E	42.30'
Remon. tag SE side 18" Oak	S25°W	43.15'
Remon. tag W. side 18" Oak	S30°E	32.11'

C/L N-S gravel is West 4' m/l

P.A. 345 1990 KENT COUNTY
PEER APPROVED 4/27/95
CHAIRMAN *Stanley Huber*

The selected location is accepted by me and is generally accepted by professional surveyors as the best available evidence of the position of the original corner.

C. Description of monument for corner and accessories established to perpetuate locating the position of the corner:

E-4 Standard Kent County Monument

Nail & KC Remon. tag S. side P. Pole	S80°E	65.15'
New Nail & KC Remon. tag N. side 24" Butternut	N20°E	42.27'
New Nail & KC Remon. tag SE side 24" Oak	S25°W	43.08'
Set Nail & KC Remon. tag W. side 15" Oak	S20°E	31.56'
Set Nail & KC Remon. tag NE side Tw. 12" Butternut	N35°W	37.77'

C/L N-S gravel is West 4' m/l



Signed by *Kirk Breitels*
Surveyor's Michigan License No. 30077

Date 4/20/95