

\$7.00
\$2.00
APR 18 1995
COMMISSION

KENT COUNTY REMONUMENTATION

STATE OF MICHIGAN
COUNTY OF KENT
RECEIVED FOR RECORD

LAND CORNER RECORDATION CERTIFICATE
Filing Requirement of Act 74, Mich. P.A. 1970

95 MAY 12 AM 10:45

For corners in
KENT COUNTY
(County)

	Located In:	Corner Code #
1. Public Land Survey	T 10N R 11W	E-9
	T _____ R _____	_____
	T _____ R _____	_____
	T _____ R _____	_____
2. Property Controlling in Section	S _____ T _____ R _____	_____
	S _____ T _____ R _____	_____
3. Miscellaneous Property in Sec.	S _____ T _____ R _____	_____
	S _____ T _____ R _____	_____

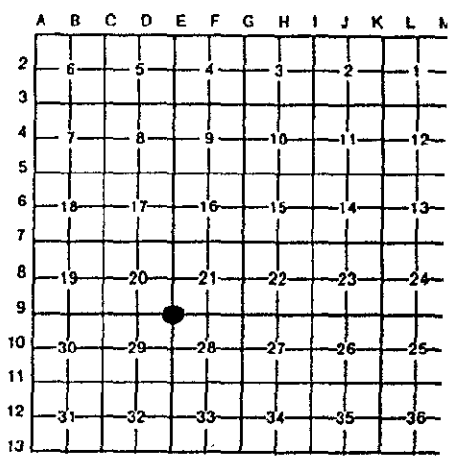
Lucy J. Bond
REG. OF DEEDS

8389

Register of Deeds Stamp & File Number

4. Lot No. _____, Recorded Plat _____
5. Private Claims _____

I, Kirk Breitels, in a field survey on Feb. 22, 19 95
do hereby certify that under requirements of P.A. 74, Michigan P.A. of 1970, the corner points mentioned in lines 1 and 2 above were in conformance with regulations and rules therefore as required in the current manual of survey instructions of the United States Department of the Interior, Bureau of Land Management or by a decree of a Court of Law and/or that the corner points mentioned in lines 3, 4 and 5 above were in conformance with the rules of the Michigan Board of Land Surveyors or by a Decree of a Court of Law; established, re-established, monumented, re-monumented, recovered, found as expressed below:



NOTE: Not more than 4 corners, all in the same town and range, may be recorded on this certificate.

A. Description of original monument and accessories and/or subsequent restoration:

E-9	1837	GLO	Cathcart	Set Post
		Kent Co. Wit.		Stone & Iron
	1971	LCRC #87	Spicer	"T" Iron
	1979	LCRC #1285	Reda	"T" Iron
	1981	LCRC #2113	Jonker	Set Kent County Monument

The position of this corner was previously approved by the Kent County Remonumentation Peer Group, monumented by Robert J. Jonker on 9/11/81 and was recorded per LCRC #2113.

B. Description of corner evidence found and/or method applied in restoring or reestablishing corner:

E-9 Found standard Kent Co. Mon. (Harrison) per witnesses from above LCRC as set by Robert J. Jonker in place of the "T" Iron he found. Said "T" Iron checks with Kent Co. Wit. and LCRC's #87 & #1285.

LCRC #2113

SW corner hse. fnd.	N07°E	76.28'
SE corner hse. fnd.	N30°E	90.60'
Remon. tag E. side 18" W. Cherry	S20°W	32.25'
Remon. tag NE side 20" Maple	S40°E	35.44'

P.A. 345 1990 KENT COUNTY
PEER APPROVED 4/27/95
CHAIRMAN *Harry Hubert*

The selected location is accepted by me and is generally accepted by professional surveyors as the best available evidence of the position of the original corner.

C. Description of monument for corner and accessories established to perpetuate locating the position of the corner:

E-9 Standard Kent County Monument

SW corner hse. fnd.	N07°E	76.28'
SE corner hse. fnd.	N30°E	90.60'
New Nail & KC Remon. tag E. side 22" W. Cherry	S20°W	32.19'
New Nail & KC Remon. tag NE side 24" Maple	S40°E	35.49'
On C/L grave! road E-W & Tree Row to South		



Signed by *Kirk Breitels*
Surveyor's Michigan License No. 30077

Date 4/20/95