

\$7.00 SEP 16 1995
-\$2.00
COMMISSION

KENT COUNTY REMONUMENTATION

STATE OF MICHIGAN
COUNTY OF KENT
RECEIVED FOR RECORD

95 MAY 12 AM 10:45

LAND CORNER RECORDATION CERTIFICATE
Filing Requirement of Act 74, Mich. P.A. 1970

For corners in
KENT COUNTY
(County)

Located In: Corner Code #

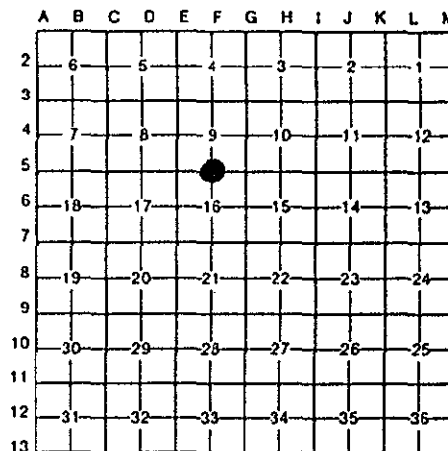
1. Public Land Survey	T 10N R 11W	F-5
	T ___ R ___	_____
	T ___ R ___	_____
	T ___ R ___	_____
2. Property Controlling in Section	S ___ T ___ R ___	_____
	S ___ T ___ R ___	_____
3. Miscellaneous Property in Sec.	S ___ T ___ R ___	_____
	S ___ T ___ R ___	_____

Lucy Bond
REG. OF DEEDS

8395

Register of Deeds Stamp & File Number

4. Lot No. _____, Recorded Plat _____
5. Private Claims _____



I, Kirk Breitels, in a field survey on Feb. 24, 19 95, do hereby certify that under requirements of P.A. 74, Michigan P.A. of 1970, the corner points mentioned in lines 1 and 2 above were in conformance with regulations and rules therefore as required in the current manual of survey instructions of the United States Department of the Interior, Bureau of Land Management or by a decree of a Court of Law and/or that the corner points mentioned in lines 3, 4 and 5 above were in conformance with the rules of the Michigan Board of Land Surveyors or by a Decree of a Court of Law; established, re-established, monumented, re-monumented, recovered, found as expressed below:

NOTE: Not more than 4 corners, all in the same town and range, may be recorded on this certificate.

A. Description of original monument and accessories and/or subsequent restoration:

F-5	1837	GLO	Cathcart	Set Post
	1900	Williams & Works		Stone
	1965	Kent Co. Wit.		1" Iron
	1983	LCRC #3680	Bueche	Set Kent County Monument

The position of this corner was previously approved by the Kent County Remonumentation Peer Group, monumented by John C. Bueche on 121/13/83 and was recorded per LCRC #3680

B. Description of corner evidence found and/or method applied in restoring or reestablishing corner:

F-5 Found standard Kent Co. Mon. (Harrison) per witnesses from above LCRC as set by John C. Bueche in place of the 1" x 6" Iron over another 1" x 6" Iron he found over a 2" iron. All Irons check with Kent Co. Wit.

LCRC #3680

KC Remon. tag & nail SW side 24" Maple	S40°E	47.58'
KC Remon. tag & nail S. side 40" Maple	N65°W	168.66'
Nail N. side Power Pole	S05°W	68.87'

Power line N-S is East 9' m/l
On C/L blacktop road E-W
On old tree line N-S

P.A. 345 1990 KENT COUNTY
PEER APPROVED 4/27/95
CHAIRMAN *Harry Huber*

The selected location is accepted by me and is generally accepted by professional surveyors as the best available evidence of the position of the original corner.

C. Description of monument for corner and accessories established to perpetuate locating the position of the corner:

F-5 Standard Kent County Monument

New KC Remon. tag & nail SW side 30" Maple	S40°E	47.60'
New KC Remon. tag & nail S. side 48" Maple	N65°W	168.57'
New KC Remon. tag & nail E. side Power Pole	S05°E	69.31'

Power line N-S is East 9' m/l
On C/L blacktop road E-W
On old tree line N-S



Signed by *Kirk Breitels*

Date 4/20/95

Surveyor's Michigan License No. 30077