

SEP 18 1995

\$7.00 COMMISSION  
\$2.00

KENT COUNTY REMONUMENTATION

STATE OF MICHIGAN  
COUNTY OF KENT  
RECEIVED FOR RECORD

LAND CORNER RECORDATION CERTIFICATE  
Filing Requirement of Act 74, Mich. P.A. 1970

95 MAY 12 AM 10:45

For corners in  
KENT COUNTY  
(County)

Located In: Corner Code #

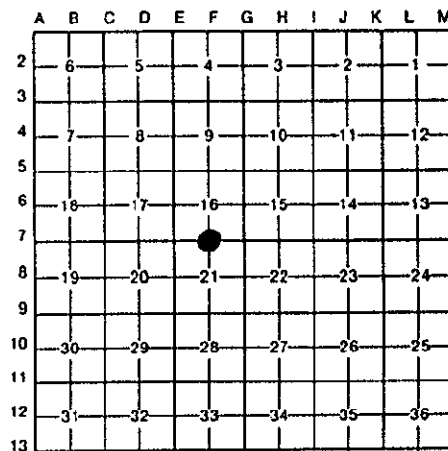
1. Public Land Survey	T 10N R 11W	F-7
	T R	
	T R	
	T R	
2. Property Controlling in Section	S T R	
	S T R	
3. Miscellaneous Property in Sec.	S T R	
	S T R	

*Lucy Bond*  
REG. OF DEEDS

8396

Register of Deeds Stamp & File Number

- 4. Lot No. \_\_\_\_\_, Recorded Plat \_\_\_\_\_
- 5. Private Claims \_\_\_\_\_



I, Kirk Breitels, in a field survey on Feb. 24, 19 95, do hereby certify that under requirements of P.A. 74, Michigan P.A. of 1970, the corner points mentioned in lines 1 and 2 above were in conformance with regulations and rules therefore as required in the current manual of survey instructions of the United States Department of the Interior, Bureau of Land Management or by a decree of a Court of Law and/or that the corner points mentioned in lines 3, 4 and 5 above were in conformance with the rules of the Michigan Board of Land Surveyors or by a Decree of a Court of Law; established, re-established, monumented, re-monumented, recovered, found as expressed below:

NOTE: Not more than 4 corners, all in the same town and range, may be recorded on this certificate.

A. Description of original monument and accessories and/or subsequent restoration:

F-7	1837	GLO	Cathcart	Set Post
	1942,56	Kent Co. Wit.		Leaded Stone-1/2" Iron
	1976	LCRC #3274	Hay	3/4" Iron
	1977	LCRC #3357	Glaza	1" Iron
	1984	LCRC #3745	Meyer	Set Kent County Monument

The position of this corner was previously approved by the Kent County Remonumentation Peer Group, monumented by Allan L. Meyer on 2/20/84 and was recorded per LCRC #3745.

B. Description of corner evidence found and/or method applied in restoring or reestablishing corner:

F-7 Found standard Kent Co. Mon. (Harrison) per witnesses from above LCRC as set by Allan L. Meyer in place of the he found. Said checks with Kent Co. Wit.

LCRC #3745

Nail & KC Remon. tag N. side 36" W. Pine	S75°W	118.86'
Nail & KC Remon. tag W. side 24" Beech	N38°E	49.07'
Nail & KC Remon. tag SE side 16" Oak	N70°E	79.17'
Nail & KC Remon. tag N. side 30" W. Pine	S68°E	73.30'
C/L steel corner fence post	North	23.70'
Top C/L MBT Co. box	S46°W	38.03'
C/L blacktop road running E-W is 2' North m/l		

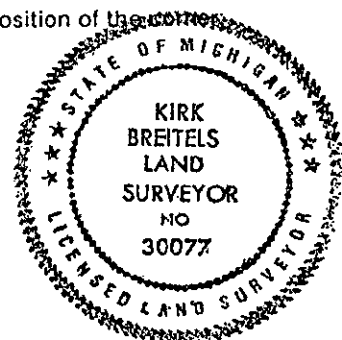
P.A. 345 1990 KENT COUNTY  
PEER APPROVED 4/27/95  
CHAIRMAN *Harry Huber*

The selected location is accepted by me and is generally accepted by professional surveyors as the best available evidence of the position of the original corner.

C. Description of monument for corner and accessories established to perpetuate locating the position of the corner:

F-7 Standard Kent County Monument

New Nail & KC Remon. tag N. side 40" W. Pine	S75°W	118.81'
New Nail & KC Remon. tag W. side 30" Beech	N38°E	49.06'
New Nail & KC Remon. tag SE side 24" Oak	N70°E	79.12'
New Nail & KC Remon. tag N. side 40" W. Pine	S68°E	73.33'
C/L steel corner fence post	North	23.70'
Top C/L MBT Co. box	S46°W	38.03'
C/L blacktop road running E-W is 2' North m/l		



Signed by

*Kirk Breitels*

Date

4/20/95

Surveyor's Michigan License No. 30077