

MAY 22 2000

Seg 2

\$1.00
\$2.00

KENT COUNTY REMONUMENTATION MAINTENANCE SECTION

LAND CORNER RECORDATION CERTIFICATE
Filing Requirement of Act 74, Mich. P.A. 1970

For corners in

KENT COUNTY
(County)

Located In:

Corner Code #

1. Public Land Survey

T 10N R 11W

Solon Twp.

G-1

2. Property Controlling in Section

S T R

3. Miscellaneous Property in Sec.

S T R

REG. OF DEEDS

[Signature]

STATE OF MICHIGAN
COUNTY OF KENT
RECEIVED FOR RECORD
1999 NOV -4 AM 8:35

11460

Register of Deeds Stamp & File Number

4. Lot No. _____, Recorded Plat _____
5. Private Claims _____

I, Kirk Breitels, in a field survey on Oct. 11, 19 99 do hereby state that under requirements of P.A. 74, Michigan P.A. of 1970, the corner points mentioned in lines 1 and 2 above were in conformance with regulations and rules therefore as required in the current manual of survey instructions of the United States Department of the Interior, Bureau of Land Management or by a decree of a Court of Law and/or that the corner points mentioned in lines 3, 4 and 5 above were in conformance with the rules of the Michigan Board of Land Surveyors or by a Decree of a Court of Law; established, re-established, monumented, recovered, found as expressed below:

NOTE: Not more than 2 corners, all in the same town and range, may be recorded on this certificate.

1	A	B	C	D	E	F	G	H	I	J	K	L	M
2		6		5		4		3		2		1	
3													
4		7		8		9		10		11		12	
5													
6		18		17		16		15		14		13	
7													
8		19		20		21		22		23		24	
9													
10		30		29		28		27		26		25	
11													
12		31		32		33		34		35		36	
13													

A. Description of original monument and accessories and/or subsequent restoration:

G-1 Kent County Monument, LCRC #8399

- Spike in NE side P. Pole S45°E 65.64'
- Spike in NE side 28" Maple S20°W 100.17'
- NE corner Tel. Riser S30°W 70.60'
- Nail & KC Remon. tag N. side P. Pole N80°E 98.88'
- Nail & KC Remon. tag W. side P. Pole N00°E 158.12'
- N. edge of Mon. Box - South 0.94'
- On C/L road South; C/L road E-W is 1.5' South

P.A. 345 1000 KENT COUNTY

PEER APPROVED 4/27/98
CHAIRMAN *[Signature]*

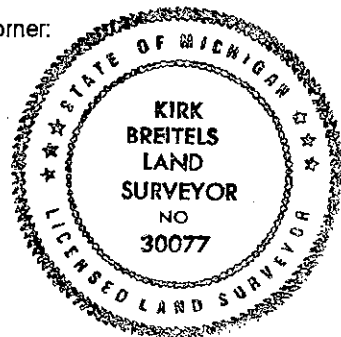
B. Description of corner evidence found and/or method applied in restoring or reestablishing corner:

G-1 AFTER ROAD CONSTRUCTION, Set Kent County Monument (Harrison) in Mon. Box on Twp. Line at the intersection of remaining witnesses from LCRC #8399

C. Description of monument for corner and accessories established to perpetuate locating the position of the corner:

G-1 Standard Kent County Monument in Mon. Box

- Nail & KC Remon. tag NE side P. Pole S45°E 65.61'
- Nail & KC Remon. tag NE side 32" Maple S20°W 100.05'
- Nail & KC Remon. tag N. side P. Pole N70°E 98.90'
- Nail & KC Remon. tag W. side P. Pole N05°W 158.12'
- H-13 Ensley Twp. (Newaygo Co. Mon.) West 115.14'
- On C/L roads E-W-S ±



Signed by *[Signature]*
Surveyor's Michigan License No. 30077

Date 10/28/99