

SURVEY
RECORDATION

SEP 13 1995
\$7.00
\$2.00 COMM. S.E.C.

KENT COUNTY REMONUMENTATION

STATE OF MICHIGAN
COUNTY OF KENT
RECEIVED FOR RECORD

LAND CORNER RECORDATION CERTIFICATE
Filing Requirement of Act 74, Mich. P.A. 1970

95 MAY 12 AM 10:45

David J. Bond
REG. OF DEEDS

For corners in
KENT COUNTY
(County)

Located In: Corner Code: #

- 1. Public Land Survey T 10N R 11W G-2
- T _____ R _____
- T _____ R _____
- T _____ R _____
- 2. Property Controlling S _____ T _____ R _____
- in Section S _____ T _____ R _____
- 3. Miscellaneous S _____ T _____ R _____
- Property in Sec. S _____ T _____ R _____
- 4. Lot No. _____, Recorded Plat _____
- 5. Private Claims _____

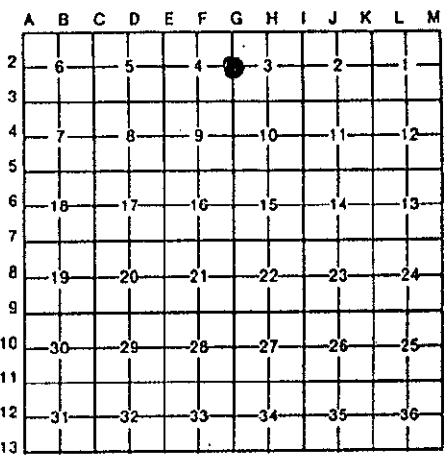
8400

Register of Deeds Stamp & File Number

I, Kirk Breitels, in a field survey on Feb. 24, 19 95

do hereby certify that under requirements of P.A. 74, Michigan P.A. of 1970, the corner points mentioned in lines 1 and 2 above were in conformance with regulations and rules therefore as required in the current manual of survey instructions of the United States Department of the Interior, Bureau of Land Management or by a decree of a Court of Law and/or that the corner points mentioned in lines 3, 4 and 5 above were in conformance with the rules of the Michigan Board of Land Surveyors or by a Decree of a Court of Law; established, re-established, monumented, re-monumented, recovered, found as expressed below:

NOTE: Not more than 4 corners, all in the same town and range, may be recorded on this certificate.



A. Description of original monument and accessories and/or subsequent restoration:

G-2	1837	GLO	Cathcart	Set Post
	1928	Williams & Works		Iron-Boat Spike
	1956	Kent Co. Wit.		Iron
	1992	LCRC #6591	Bueche	Set Kent County Monument

The position of this corner was previously approved by the Kent County Remonumentation Peer Group, monumented by John C. Bueche on 10/12/92 and was recorded per LCRC #6591.

B. Description of corner evidence found and/or method applied in restoring or reestablishing corner:

G-2 Found standard Kent Co. Mon. (Harrison) per witnesses from above LCRC as set by John C. Bueche in place of the Iron he found inside a mon. box. Said Iron checks with Kent Co. Wit. and Williams & Works information.

LCRC #6591

Nail & tag #16042 S. side 8" Cherry	N80°W	33.31'	P.A. 345 1990 KENT COUNTY
Nail & tag #16042 NE side 10" Cherry	N60°W	90.22'	? PEER APPROVED 4/27/95
Nail & tag #16042 C/L 4" Maple	N40°E	77.96'	CHAIRMAN <i>Harry Hubert</i>
Nail & KC Remon. tag S. side 8" Poplar	East	32.87'	
Nail & KC Remon. tag W. side 6" Sassafras	S10°W	138.72'	
On C/L bit. N-S			

The selected location is accepted by me and is generally accepted by professional surveyors as the best available evidence of the position of the original corner.

C. Description of monument for corner and accessories established to perpetuate locating the position of the corner:

G-2 Standard Kent County Monument			
Set Nail & KC Remon. tag S. side 14" Cherry	N80°W	33.28'	
Nail & tag #16042 NE side 12" Cherry	N60°W	70.83'	
Nail & tag #16042 C/L 6" Maple	N40°E	77.96'	
Nail & KC Remon. tag W. side 8" Sassafras	S10°W	138.94'	
Capped Iron (Glaza) - East 32.72'			
On C/L bit. N-S; on fence line W			



Signed by *Kirk Breitels*

Date 4/20/95

Surveyor's Michigan License No. 30077