

SURVEY & REMONUMENTATION

\$7.00 SEP 18 1995 \$2.00 COMM

KENT COUNTY REMONUMENTATION

STATE OF MICHIGAN COUNTY OF KENT RECEIVED FOR RECORD 95 MAY 12 AM 10:45

LAND CORNER RECORDATION CERTIFICATE Filing Requirement of Act 74, Mich. P.A. 1970

REG. OF DEEDS

For corners in KENT COUNTY (County)

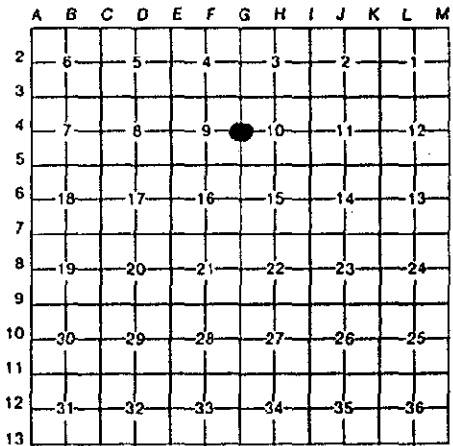
Table with columns: Located In: (Town, Range), Corner Code #, and numbered items 1-5.

8402

Register of Deeds Stamp & File Number

I, Kirk Breitels, in a field survey on Feb. 24, 1995, do hereby certify that under requirements of P.A. 74, Michigan P.A. of 1970, the corner points mentioned in lines 1 and 2 above were in conformance with regulations and rules therefore as required in the current manual of survey instructions of the United States Department of the Interior, Bureau of Land Management or by a decree of a Court of Law and/or that the corner points mentioned in lines 3, 4 and 5 above were in conformance with the rules of the Michigan Board of Land Surveyors or by a Decree of a Court of Law; established, re-established, monumented, re-monumented, recovered, found as expressed below:

NOTE: Not more than 4 corners, all in the same town and range, may be recorded on this certificate.



A. Description of original monument and accessories and/or subsequent restoration:

Table with columns: G-4, Year, Agency, Name, and Description of monument.

The position of this corner was previously approved by the Kent County Remonumentation Peer Group, monumented by Robert J. Jonker on 9/23/81 and was recorded per LCRC #2125.

B. Description of corner evidence found and/or method applied in restoring or reestablishing corner:

G-4 Found standard Kent Co. Mon. (Harrison) per witnesses from above LCRC as set by Robert J. Jonker in place of the 1" Iron he found inside a mon. box. Said Iron checks with Kent Co. Wit. and LCRC #780.

LCRC #2125

Table with columns: Description, Bearing, and Distance for various monuments.

P.A. 345 1990 KENT COUNTY

PEER APPROVED 4/27/95

CHAIRMAN

Handwritten signature of Harry Thubert

The selected location is accepted by me and is generally accepted by professional surveyors as the best available evidence of the position of the original corner.

C. Description of monument for corner and accessories established to perpetuate locating the position of the corner:

G-4 Standard Kent County Monument

Table with columns: Description, Bearing, and Distance for new monuments.



Signed by

Handwritten signature of Kirk Breitels

Date

4/20/95

Surveyor's Michigan License No. 30077