

CLERK OF THE COUNTY OF KENT

STATE OF MICHIGAN
COUNTY OF KENT
RECEIVED FOR RECORD

SEP 18 1995

KENT COUNTY REMONUMENTATION

95 MAY 12 AM 10:45

\$7.00
\$2.00 COMMISSION

LAND CORNER RECORDATION CERTIFICATE

Filing Requirement of Act 74, Mich. P.A. 1970

Lucy J. Bond
REG. OF DEEDS

For corners in
KENT COUNTY

(County)	Located In:	Corner Code #
1. Public Land Survey	T <u>10N</u> R <u>11W</u>	G-5
	T _____ R _____	_____
	T _____ R _____	_____
	T _____ R _____	_____
2. Property Controlling in Section	S _____ T _____ R _____	_____
	S _____ T _____ R _____	_____
3. Miscellaneous Property in Sec.	S _____ T _____ R _____	_____
	S _____ T _____ R _____	_____
4. Lot No. _____, Recorded Plat _____		
5. Private Claims _____		

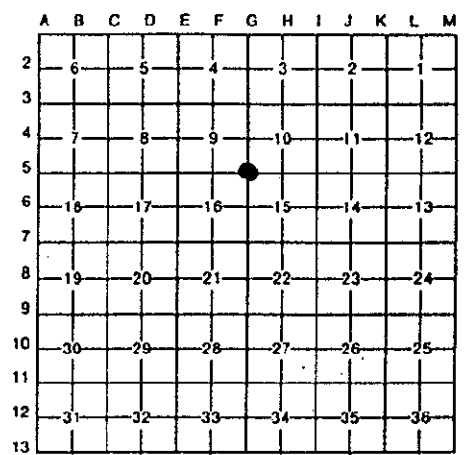
8403

Register of Deeds Stamp & File Number

I, Kirk Breitels, in a field survey on Feb. 24, 1995

do hereby certify that under requirements of P.A. 74, Michigan P.A. of 1970, the corner points mentioned in lines 1 and 2 above were in conformance with regulations and rules therefore as required in the current manual of survey instructions of the United States Department of the Interior, Bureau of Land Management or by a decree of a Court of Law and/or that the corner points mentioned in lines 3, 4 and 5 above were in conformance with the rules of the Michigan Board of Land Surveyors or by a Decree of a Court of Law; established, re-established, monumented, re-monumented, recovered, found as expressed below:

NOTE: Not more than 4 corners, all in the same town and range, may be recorded on this certificate.



A. Description of original monument and accessories and/or subsequent restoration:

G-5	1837	GLO	Cathcart	Set Post
	1965	Kent Co. Wit.		Mon. Box
	1983	LCRC #3358	Glaza	No desc. - witnesses given
	1991	LCRC #5759	Roosien	Set Kent County Monument in mon. box

The position of this corner was previously approved by the Kent County Remonumentation Peer Group, monumented by Kevin Roosien on 2/15/91 and was recorded per LCRC #5759.

B. Description of corner evidence found and/or method applied in restoring or reestablishing corner:

G-5 Found standard Kent Co. Mon. (Harrison) per witnesses from above LCRC as set by Kevin Roosien in place of the 3/4" Iron he found over a 1" Iron inside a mon box. Both Irons check with Kent Co. Wit. and LCRC #3358.

LCRC #5759

Nail & KC Remon. tag W. side Guy Pole	S15°E	101.57'
Nail & KC Remon. tag E. side Guy Pole	S15°W	104.0'
Nail & KC Remon. tag N. side P. Pole	S75°W	114.43'
Nail & KC Remon. tag S. side P. Pole	N55°E	130.05'

P.A. 345 1990 KENT COUNTY
PEER APPROVED 4/27/95
CHAIRMAN *Harry H. Huber*

The selected location is accepted by me and is generally accepted by professional surveyors as the best available evidence of the position of the original corner.

C. Description of monument for corner and accessories established to perpetuate locating the position of the corner:

G-5 Standard Kent County Monument		
Nail & KC Remon. tag W. side Guy Pole	S15°E	101.51'
Nail & KC Remon. tag E. side Guy Pole	S15°W	104.28'
Set Nail & KC Remon. tag N. side P. Pole (new)	S75°W	160.69'
Nail & KC Remon. tag S. side P. Pole	N55°E	130.00'
Set Nail & KC Remon. tag W. side P. Pole	N15°W	156.97'
Set Nail & KC Remon. tag S. side 36" Beech	N80°W	175.36'



Signed by *Kurt Buntz*

Date 4/20/95

Surveyor's Michigan License No. 30077