

SURVEYOR  
 \$7.00 SEP 13 1995  
 \$2.00  
 COMMISSION

KENT COUNTY REMONUMENTATION

STATE OF MICHIGAN  
 COUNTY OF KENT  
 RECEIVED FOR RECORD  
 95 MAY 12 AM 10:45

**LAND CORNER RECORDATION CERTIFICATE**  
 Filing Requirement of Act 74, Mich. P.A. 1970

For corners in  
**KENT COUNTY**  
 (County)

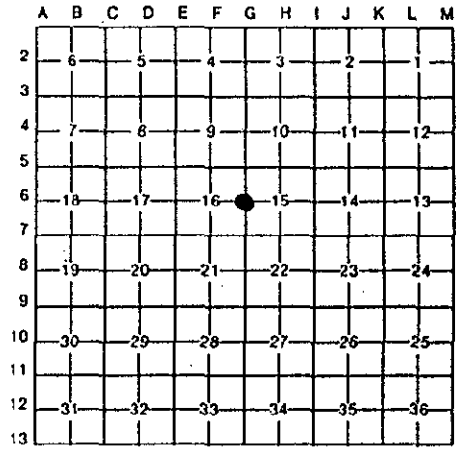
	Located In:	Corner Code #
1. Public Land Survey	T <u>10N</u> R <u>11W</u>	<u>G-6</u>
	T _____ R _____	_____
	T _____ R _____	_____
	T _____ R _____	_____
2. Property Controlling in Section	S _____ T _____ R _____	_____
	S _____ T _____ R _____	_____
3. Miscellaneous Property in Sec.	S _____ T _____ R _____	_____
	S _____ T _____ R _____	_____
4. Lot No. _____, Recorded Plat _____		
5. Private Claims _____		

*W. J. Bond*  
 REG. OF DEEDS

8404

Register of Deeds Stamp & File Number

I, Kirk Breitels, in a field survey on Feb. 24, 19 95, do hereby certify that under requirements of P.A. 74, Michigan P.A. of 1970, the corner points mentioned in lines 1 and 2 above were in conformance with regulations and rules therefore as required in the current manual of survey instructions of the United States Department of the Interior, Bureau of Land Management or by a decree of a Court of Law and/or that the corner points mentioned in lines 3, 4 and 5 above were in conformance with the rules of the Michigan Board of Land Surveyors or by a Decree of a Court of Law; established, re-established, monumented, re-monumented, recovered, found as expressed below:



NOTE: Not more than 4 corners, all in the same town and range, may be recorded on this certificate.

A. Description of original monument and accessories and/or subsequent restoration:

G-6	1837	GLO	Cathcart	Set Post
	1956	Kent Co. Wit.		1" Iron
	1976	LCRC #3274	Hay	PK Nail over 1" iron
	1983	LCRC #3356	Glaza	PK Nail
	1984	LCRC #3746	Meyer	Set Kent County Monument in mon. box

The position of this corner was previously approved by the Kent County Remonumentation Peer Group, monumented by Allan L. Meyer on 2/21/84 and was recorded per LCRC #3746.

B. Description of corner evidence found and/or method applied in restoring or reestablishing corner:

G-6 Found standard Kent Co. Mon. (Harrison) per witnesses from above LCRC as set by Allan L. Meyer in place of the 3/4" Iron and 1" Iron he found inside a mon. box. Both Irons check with Kent Co. Wit. and LCRC's #3274 & #3356.

LCRC #3746

Nail & KC Remon. tag N. side 16" Maple	N82°E	45.46'
Nail & KC Remon. tag SW side 8" Elm	S42°E	46.67'
Nail & KC Remon. tag W. side clump 4"-6" Elms	S05°E	46.67'
Nail & KC Remon. tag top 8" dia. fence post	S78°W	30.70'
Nail & KC Remon. tag E. side 6" Elm	N28°W	78.74'
Nail & KC Remon. tag W. side 28" Oak	N28°E	66.18'

C/L blacktop road running N-S is 2' m/l West

The selected location is accepted by me and is generally accepted by professional surveyors as the best available evidence of the position of the original corner.

C. Description of monument for corner and accessories established to perpetuate locating the position of the corner:

G-6 Standard Kent County Monument

New Nail & KC Remon. tag W. side 38" Oak	N28°E	66.25'
Set Nail & KC Remon. tag N. side 30" Maple	N90°E	65.78'
Set Nail & KC Remon. tag SW side 10" Elm	S30°E	56.99'
Set Nail & KC Remon. tag SE side 12" Elm	S30°W	74.64'
C/L blacktop road running N-S is 2' m/l West		

P.A. 345 1990 KENT COUNTY  
 PEER APPROVED 4/27/95  
 CHAIRMAN *Harry Peube*



Signed by

*Kirk Breitels*

Date

4/20/95

Surveyor's Michigan License No. 30077