

SURVEYOR

REMONUMENTATION

SEP 13 1995

\$7.00
\$2.00 COMMISSION

KENT COUNTY REMONUMENTATION :

STATE OF MICHIGAN
COUNTY OF KENT
RECEIVED FOR RECORD

LAND CORNER RECORDATION CERTIFICATE
Filing Requirement of Act 74, Mich. P.A. 1970

95 MAY 12 AM 10:46

For corners in
KENT COUNTY
(County)

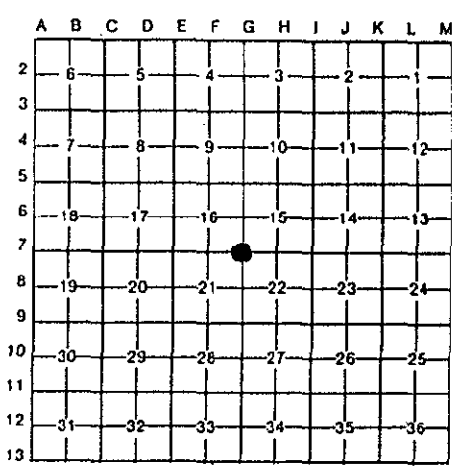
Located In:	Corner Code #
T 10N R 11W'	G-7
T _____ R _____	_____
T _____ R _____	_____
T _____ R _____	_____
S _____ T _____ R _____	_____
S _____ T _____ R _____	_____
S _____ T _____ R _____	_____
S _____ T _____ R _____	_____

W. J. Bond
REG. OF DEEDS

8405

Register of Deeds Stamp & File Number

- 4. Lot No. _____, Recorded Plat _____
- 5. Private Claims _____



I, Kirk Breitels, in a field survey on Feb. 24, 19 95, do hereby certify that under requirements of P.A. 74, Michigan P.A. of 1970, the corner points mentioned in lines 1 and 2 above were in conformance with regulations and rules therefore as required in the current manual of survey instructions of the United States Department of the Interior, Bureau of Land Management or by a decree of a Court of Law and/or that the corner points mentioned in lines 3, 4 and 5 above were in conformance with the rules of the Michigan Board of Land Surveyors or by a Decree of a Court of Law; established, re-established, monumented, re-monumented, recovered, found as expressed below:

NOTE: Not more than 4 corners, all in the same town and range, may be recorded on this certificate.

A. Description of original monument and accessories and/or subsequent restoration:

G-7	1837	GLO	Cathcart	Set Post
	1954	Kent Co. Wit.		Mon. Box
	1973	LCRC #587	Spicer	3/4" Iron in mon. box
	1981	LCRC #2124	Jonker	Set Kent County Monument in mon. box

The position of this corner was previously approved by the Kent County Remonumentation Peer Group, monumented by Robert J. Jonker on 9/15/81 and was recorded per LCRC #2124.

B. Description of corner evidence found and/or method applied in restoring or reestablishing corner:

G-7 Found standard Kent Co. Mon. (Harrison) per witnesses from above LCRC as set by Robert J. Jonker in place of the 3/4" Iron he found over a 3/4" Iron inside a mon. box. Both Irons check with Kent Co. Wit. and LCRC #587.

LCRC #2124

SE corner cellar fnd.	N39°W	89.05'
NW corner chimney	S50°E	69.62'
USGS	N51°E	58.45'
USGS	S75°W	82.90'
On C/L "X"		

P.A. 345 1990 KENT COUNTY
PEER APPROVED 4/27/95
CHAIRMAN *Harry Huber*

The selected location is accepted by me and is generally accepted by professional surveyors as the best available evidence of the position of the original corner.

C. Description of monument for corner and accessories established to perpetuate locating the position of the corner:

G-7 Standard Kent County Monument

SE corner cellar fnd.	N39°W	89.05'
NW corner chimney	S50°E	69.62'
USGS	N51°E	58.42'
USGS	S75°W	82.70'
On C/L "X"		



Signed by Kirk Breitels Date 4/20/95

Surveyor's Michigan License No. 30077