

SURVEILLANCE  
 REMONUMENTATION  
 \$7.00 P 1 8 1935  
 \$2.00  
 COMMISSION

KENT COUNTY REMONUMENTATION

STATE OF MICHIGAN  
 COUNTY OF KENT  
 RECEIVED FOR RECORD

LAND CORNER RECORDATION CERTIFICATE 95 MAY 12 AM 10:46  
 Filing Requirement of Act 74, Mich. P.A. 1970

For corners in  
 KENT COUNTY  
 (County)

Located In: Corner Code #

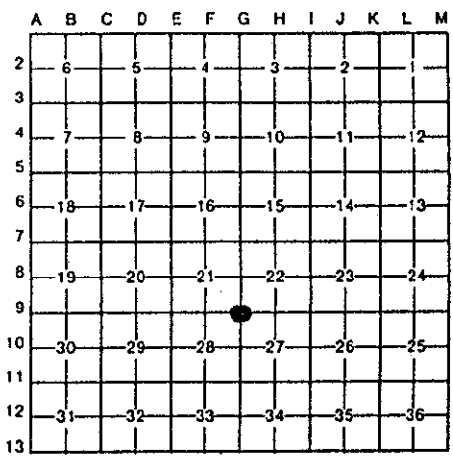
- 1. Public Land Survey T 10N R 11W G-9
- T \_\_\_\_\_ R \_\_\_\_\_
- T \_\_\_\_\_ R \_\_\_\_\_
- T \_\_\_\_\_ R \_\_\_\_\_
- 2. Property Controlling S \_\_\_\_\_ T \_\_\_\_\_ R \_\_\_\_\_
- in Section S \_\_\_\_\_ T \_\_\_\_\_ R \_\_\_\_\_
- 3. Miscellaneous S \_\_\_\_\_ T \_\_\_\_\_ R \_\_\_\_\_
- Property in Sec. S \_\_\_\_\_ T \_\_\_\_\_ R \_\_\_\_\_
- 4. Lot No. \_\_\_\_\_, Recorded Plat \_\_\_\_\_
- 5. Private Claims \_\_\_\_\_

*Lucy J. Bond*  
 REG. OF DEEDS

8407

Register of Deeds Stamp & File Number

I, Kirk Breitels, in a field survey on Feb. 24, 19 95, do hereby certify that under requirements of P.A. 74, Michigan P.A. of 1970, the corner points mentioned in lines 1 and 2 above were in conformance with regulations and rules therefore as required in the current manual of survey instructions of the United States Department of the Interior, Bureau of Land Management or by a decree of a Court of Law and/or that the corner points mentioned in lines 3, 4 and 5 above were in conformance with the rules of the Michigan Board of Land Surveyors or by a Decree of a Court of Law; established, re-established, monumented, re-monumented, recovered, found as expressed below:



NOTE: Not more than 4 corners, all in the same town and range, may be recorded on this certificate.

A. Description of original monument and accessories and/or subsequent restoration:

G-9	1837	GLO	Cathcart	Set Post
	1954	Kent Co. Wit.		Iron
	1971	LCRC #87	Spicer	1" Iron in mon. box
	1981	LCRC #2122	Jonker	Set Kent County Monument

The position of this corner was previously approved by the Kent County Remonumentation Peer Group, monumented by Robert J. Jonker on 9/18/81 and was recorded per LCRC #2122.

B. Description of corner evidence found and/or method applied in restoring or reestablishing corner:

G-9 Found standard Kent Co. Mon. (Harrison) per witnesses from above LCRC as set by in place of the 1" Iron he found inside a mon. box. Said Iron checks with Kent Co. Wit. and LCRC #87.

LCRC #2122

SE corner garage fnd.	N25°W	112.30'
Remon. tag SE side 14" Pine	N36°E	63.62'
Remon. tag SW side P. Pole	S74°E	80.97'
Remon. tag S. side Guy Pole	S75°W	47.94'

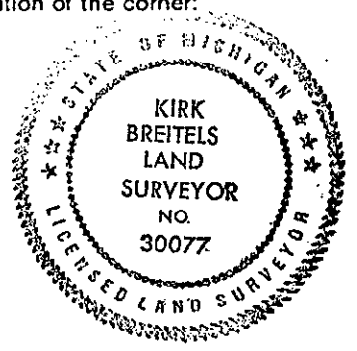
P.A. 345 1990 KENT COUNTY  
 PEER APPROVED 4/27/95  
 CHAIRMAN *Harry Hubert*

The selected location is accepted by me and is generally accepted by professional surveyors as the best available evidence of the position of the original corner.

C. Description of monument for corner and accessories established to perpetuate locating the position of the corner:

G-9 Standard Kent County Monument

SE corner garage fnd.	N25°W	112.30'
New Nail KC Remon. tag SE side 20" Pine	N36°E	63.43'
Set Nail & KC Remon. tag SW side P. Pole (new)	S74°E	82.13'
Set Nail & KC Remon. tag SE side 18" Elm	S50°W	63.87'



Signed by Kirk Breitels Date 4/20/95  
 Surveyor's Michigan License No. 30077