

REMONUMENTATION
 \$7.00 SEP 18 1995
 \$2.00
 COMMISSION

KENT COUNTY REMONUMENTATION
 LAND CORNER RECORDATION CERTIFICATE
 Filing Requirement of Act 74, Mich. P.A. 1970

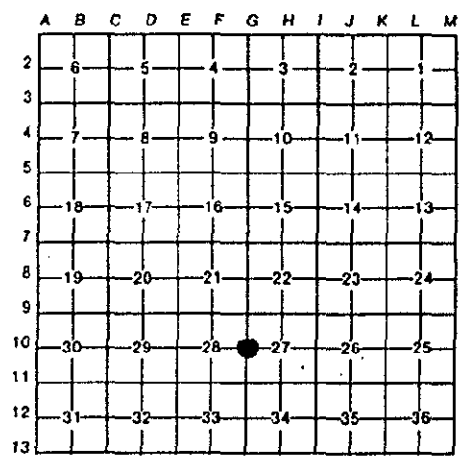
STATE OF MICHIGAN
 COUNTY OF KENT
 RECEIVED FOR RECORD
 95 MAY 12 AM 10:46
Luis J. Bond
 REG. OF DEEDS

For corners in
 KENT COUNTY
 (County)

| | Located In: | Corner Code # |
|---------------------------------------|---------------------------|---------------|
| 1. Public Land Survey | T <u>10N</u> R <u>11W</u> | <u>G-10</u> |
| | T _____ R _____ | _____ |
| | T _____ R _____ | _____ |
| | T _____ R _____ | _____ |
| 2. Property Controlling in Section | S _____ T _____ R _____ | _____ |
| | S _____ T _____ R _____ | _____ |
| 3. Miscellaneous Property in Sec. | S _____ T _____ R _____ | _____ |
| | S _____ T _____ R _____ | _____ |
| 4. Lot No. _____, Recorded Plat _____ | | |
| 5. Private Claims _____ | | |

8408
 Register of Deeds Stamp & File Number

I, Kirk Breitels, in a field survey on Feb. 24, 19 95, do hereby certify that under requirements of P.A. 74, Michigan P.A. of 1970, the corner points mentioned in lines 1 and 2 above were in conformance with regulations and rules therefore as required in the current manual of survey instructions of the United States Department of the Interior, Bureau of Land Management or by a decree of a Court of Law and/or that the corner points mentioned in lines 3, 4 and 5 above were in conformance with the rules of the Michigan Board of Land Surveyors or by a Decree of a Court of Law; established, re-established, monumented, re-monumented, recovered, found as expressed below:



NOTE: Not more than 4 corners, all in the same town and range, may be recorded on this certificate.

A. Description of original monument and accessories and/or subsequent restoration:

| | | | | |
|-----|------|---------------|----------|--------------------------|
| G-1 | 1837 | GLO | Cathcart | Set Post |
| | | Kent Co. Wit. | | Conc. Mon. |
| | 1971 | LCRC #87 | Spicer | 1" Iron in mon. box |
| | 1981 | LCRC #2129 | Jonker | Set Kent County Monument |

The position of this corner was previously approved by the Kent County Remonumentation Peer Group, monumented by Robert J. Jonker on 9/15/81 and was recorded per LCRC #2129.

B. Description of corner evidence found and/or method applied in restoring or reestablishing corner:

G-10 Found standard Kent Co. Mon. (Harrison) per witnesses from above LCRC as set by Robert J. Jonker in place of the 1" Iron he found over a conc. mon. in a mon. box. Said Iron and Conc. Mon. checks with Kent Co. Wit. and LCRC #87.

LCRC #2129

| | | |
|-------------------------------------|-------|--------|
| Remon. tag SE side P. Pole | N53°E | 85.58' |
| Remon. tag NE side P. Pole | N46°W | 83.49' |
| C/L S. end road culv. (chisel mark) | S63°W | 48.34' |
| C/L S. end road culv. (chisel mark) | S62°E | 47.91' |

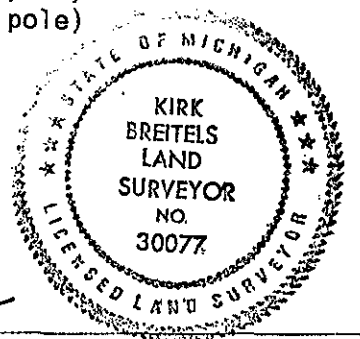
P.A. 345 1990 KENT COUNTY
 PEER APPROVED 4/27/95
 CHAIRMAN *Harry Hubert*

The selected location is accepted by me and is generally accepted by professional surveyors as the best available evidence of the position of the original corner.

C. Description of monument for corner and accessories established to perpetuate locating the position of the corner:

G-10 Standard Kent County Monument

| | | | |
|---|-------|--------|------------|
| Set Nail & KC Remon. tag SE side P. Pole | N55°E | 87.33' | (new pole) |
| Set Nail & KC Remon. tag NE side P. Pole | N50°W | 84.59' | (new pole) |
| C/L S. end road culv. (chisel mark) | S63°W | 48.30' | |
| C/L S. end road culv. (chisel mark) | S62°E | 47.91' | |
| Set Nail & KC Remon. tag SE side Guy Pole | S65°W | 60.40' | |



Signed by *Kirk Breitels* Date 4/20/95
 Surveyor's Michigan License No. 30077