

\$7.00
\$2.00

MAY 28 2000

KENT COUNTY REMONUMENTATION

SECTION

LAND CORNER RECORDATION CERTIFICATE Filing Requirement of Act 74, Mich. P.A. 1970

STATE OF MICHIGAN
COUNTY OF KENT
RECEIVED FOR RECORD
1999 JUL -9 AM 11:18

REG. DEEDS
[Signature]

For corners in
KENT COUNTY
(County)

Located In:	Corner Code #
S T10N R 11W	Solon Twp. H-3
T R	
T R	
T R	
T R	
S T R	
S T R	
S T R	
S T R	

- Public Land Survey
- Property Controlling in Section
- Miscellaneous Property in Sec.

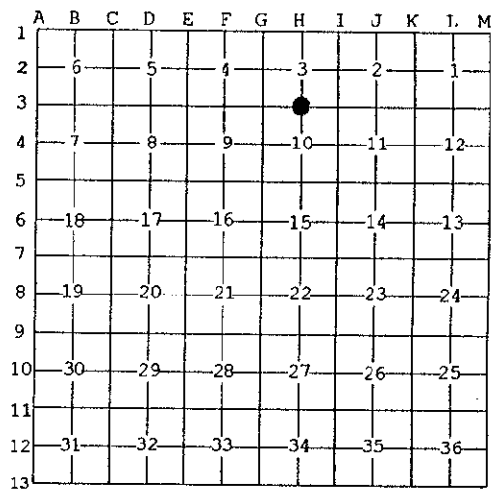
11231

Register of Deeds Stamp & File Number

- Lot No. _____, Recorded Plat _____
- Private Claims _____

I, Kirk Breitels, in a field survey on May 10, 19 99 do hereby state that under requirements of P.A. 74, Michigan P.A. of 1970, the corner points mentioned in lines 1 and 2 above were in conformance with regulations and rules therefore as required in the current manual of survey instructions of the United States Department of the Interior, Bureau of Land Management or by a decree of a Court of Law and /or that the corner points mentioned in lines 3, 4 and 5 above were in conformance with the rules of the Michigan Board of Land Surveyors or by a Decree of a Court of Law; established, re-established, monumented, recovered, found as expressed below:

NOTE: Not more than 2 corners, all in the same town and range, may be recorded on this certificate.



A. Description of original monument and accessories and/or subsequent restoration:

H-3 1837	GLO	Cathcart	Set Post
1922	Williams & Works		Found Stake - Set Iron & Stone
1929	Kent Co. Wits		Iron
1984	LCRC #4016	Bueche	Set Kent County Monument
1990	LCRC #5604	Marschall	Kent County Monument

P.A. 345 1990 KENT COUNTY.
PEER APPROVED 6/24/99
CHAIRMAN [Signature]

The position of this corner was previously approved by the Kent County Remonumentation Peer Group, monumented by John C. Bueche on 10-24-84 and was recorded per LCRC #4016.

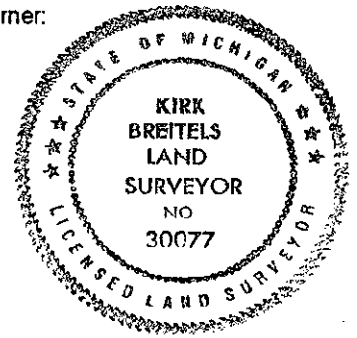
B. Description of corner evidence found and/or method applied in restoring or reestablishing corner:

H-3 Found Kent County Monument (Harrison) per witnesses from above LCRC as set by John C. Bueche in place of the 1/2" Flat Iron he found surrounded by Stones. Said Iron checks with Williams & Works information and Kent Co. Wits.	
LCRC #4016	LCRC #5604
Nail & Remon. tag 12" Maple N70°W 36.82'	Nail & Remon. tag 14" Maple S80°N 11.45'
Nail & Remon. tag 14" Maple S70°E 15.95'	Nail & Remon. tag 14" Maple N20°E 12.38'
Nail & Remon. tag 12" Maple N90°W 11.45'	Nail & Remon. tag 16" Maple S70°E 15.95'
Nail & Remon. tag 10" Maple N20°E 12.38'	Nail & Remon. tag 8" Maple N65°E 23.20'
Nail & Remon. tag 8" Maple N65°E 23.20'	Nail & Remon. tag 14" Maple S30°E 23.13'
Nail & Remon. tag 14" Maple S30°E 23.16'	Nail & Remon. tag 12" Maple N70°W 36.82'

The selected location is accepted by me and is generally accepted by professional surveyors as the best available evidence of the position of the original corner.

C. Description of monument for corner and accessories established to perpetuate locating the position of the corner:

H-3 Standard Kent County Monument	
Nail & KC Remon. tag E. side 18" Maple	N20°E 12.42'
Nail & KC Remon. tag N. side 10" Maple	N65°E 23.18'
Nail & KC Remon. tag E. side 20" Maple	S30°E 23.16'
Nail & KC Remon. tag N. side 18" Maple	N70°W 36.72'
Nail & KC Remon. tag N. side 24" Maple	S75°W 18.62'
Fence corner for fences N-W is NW 1'	



Signed by [Signature]
Surveyor's Michigan License No. 30077

Date 6/24/99