

SURVEY & REMONUMENTATION

MAR 08 1999

KENT COUNTY REMONUMENTATION

SECTION

LAND CORNER RECORDATION CERTIFICATE
Filing Requirement of Act 74, Mich. P.A. 1970

\$7.00
\$2.00

For corners in

KENT COUNTY

(County)

Located In:

Corner Code #

1. Public Land Survey	T <u>10</u> N	R <u>11</u> W	H-13
	T <u> </u>	R <u> </u>	<u> </u>
	T <u> </u>	R <u> </u>	<u> </u>
	T <u> </u>	R <u> </u>	<u> </u>
2. Property Controlling in Section	S <u> </u>	T <u> </u>	R <u> </u>
	S <u> </u>	T <u> </u>	R <u> </u>
3. Miscellaneous Property in Sec.	S <u> </u>	T <u> </u>	R <u> </u>
	S <u> </u>	T <u> </u>	R <u> </u>

4. Lot No. _____, Recorded Plat _____
5. Private Claims _____

I, Kirk Breitels, in a field survey on Jan. 7, 1998 do hereby state that under requirements of P.A. 74, Michigan P.A. of 1970, the corner points mentioned in lines 1 and 2 above were in conformance with regulations and rules therefore as required in the current manual of survey instructions of the United States Department of the Interior, Bureau of Land Management or by a decree of a Court of Law and /or that the corner points mentioned in lines 3, 4 and 5 above were in conformance with the rules of the Michigan Board of Land Surveyors or by a Decree of a Court of Law; established, re-established, monumented, recovered, found as expressed below.

NOTE: Not more than 2 corners, all in the same town and range, may be recorded on this certificate.

A. Description of original monument and accessories and/or subsequent restoration:

H-13	1837	GLO	Brookfield	Set Post
	1987-93	Williams & Works		Stone
	1966	MDSH		Iron
	1971	Williams & Works		Iron
	1983	LCRC #3249	Hackbardt	1/2" Iron
	1995	LCRC #8541	Breitels	Set Kent County Monument

P.A. 345 1990 KENT COUNTY
PEER APPROVED 2/19/98
CHAIRMAN Harry Huhese

The position of this corner was previously approved by the Kent County Remonumentation Peer Group, monumented by Kirk Breitels on 8-7-95 and was recorded per LCRC #8541.

B. Description of corner evidence found and/or method applied in restoring or reestablishing corner:

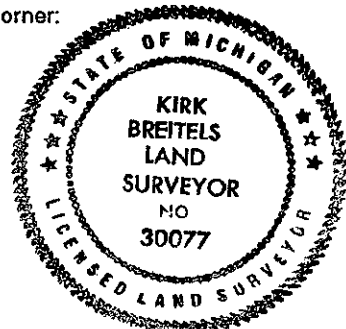
H-13 Found Kent County Monument (Harrison) per witnesses from above LCRC as set by Kirk Breitels in place of the 1" Iron Pipe next to a 1/2" Rerod he found. Both Irons check with Williams & Works, MDSH and LCRC #3249.
LCRC #8541

SE corner house foundation	N65°W	154.32'	
Nail & KC Remon. tag NE side P. Pole	N30°W	215.75'	Nail & KC Reomn. tag N. side
Nail & KC Remon. tag E. side fence post	N15°E	15.62'	12" Sassafras S65°W 66.40'
Nail & KC Remon. tag W. side 12" Elm	N35°E	50.63'	
Nail & KC Remon. tag W. side 15" Elm	S35°E	61.15'	Rerod 1.2' W. & 2.5' S.
Nail & KC Remon. tag E. side 20" Elm	S10°W	91.10'	

The selected location is accepted by me and is generally accepted by professional surveyors as the best available evidence of the position of the original corner.

C. Description of monument for corner and accessories established to perpetuate locating the position of the corner:

H-13 Standard Kent County Monument			
SE corner house foundation	N65°W	154.32'	
Nail & KC Remon. tag NE side P. Pole	N30°W	215.75'	
Nail & KC Remon. tag E. side fence post	N15°E	15.62'	
Nail & KC Remon. tag W. side 14" Elm	N35°E	50.69'	
Nail & KC Remon. tag W. side 18" Elm	S35°E	61.13'	
Nail & KC Remon. tag E. side 26" Elm	S10°W	91.10'	
Nail & KC Remon. tag N. side 14" Sassafras	S65°W	66.40'	
Kent Co. Mon. (H-1, T9N, T11W)	West	187.47'	
Rerod 1.2' W. & 2.5' S.			



Signed by Kirk Breitels
Surveyor's Michigan License No. 30077

Date 2/19/98

REG. OF DEEDS

Lucy Bond

98 MAR -5 AM 8:35

STATE OF MICHIGAN
COUNTY OF KENT
RECEIVED FOR RECORD

10586

Register of Deeds Stamp & File Number

A	B	C	D	E	F	G	H	I	J	K	L	M
1												
2	6		5		4		3		2		1	
3												
4	7		8		9		10		11		12	
5												
6	10		17		16		15		14		13	
7												
8	19		20		21		22		23		24	
9												
10	30		29		28		27		26		25	
11												
12	31		32		33		34		35		36	
13												