

MAY 22 2000

ST 00  
R 00

SECTION

KENT COUNTY REMONUMENTATION

LAND CORNER RECORDATION CERTIFICATE  
Filing Requirement of Act 74, Mich. P.A. 1970

For corners in  
KENT COUNTY

(County)

Located In:

Corner Code #

Solon Twp.

1. Public Land Survey

T 10NR 11W

I-1

T R

T R

T R

T R

2. Property Controlling  
in Section

S T R

S T R

3. Miscellaneous  
Property in Sec.

S T R

S T R

REG. OF DEEDS

*[Signature]*

STATE OF MICHIGAN  
COUNTY OF KENT  
RECEIVED FOR RECORD  
1999 NOV -4 AM 8:35

11465

Register of Deeds Stamp & File Number

4. Lot No. \_\_\_\_\_, Recorded Plat \_\_\_\_\_

5. Private Claims \_\_\_\_\_

I, Kirk Breitels, in a field survey on Oct. 11, 1999 do hereby state that under requirements of P.A. 74, Michigan P.A. of 1970, the corner points mentioned in lines 1 and 2 above were in conformance with regulations and rules therefore as required in the current manual of survey instructions of the United States Department of the Interior, Bureau of Land Management or by a decree of a Court of Law and/or that the corner points mentioned in lines 3, 4 and 5 above were in conformance with the rules of the Michigan Board of Land Surveyors or by a Decree of a Court of Law; established, re-established, monumented, recovered, found as expressed below:

NOTE: Not more than 2 corners, all in the same town and range, may be recorded on this certificate.

A	B	C	D	E	F	G	H	I	J	K	L	M
	6	5		4		3		2		1		
3												
4	7	8	9	10	11	12						
5												
6	18	17	16	15	14	13						
7												
8	19	20	21	22	23	24						
9												
10	30	29	28	27	26	25						
11												
12	31	32	33	34	35	36						
13												

A. Description of original monument and accessories and/or subsequent restoration:

I-1	1837	GLO	Cathcart	Set Post
	1923	Williams & Works		Iron
	1959	Kent Co. Wits		1" Iron
	1985	LCRC #4386	Ochs	Set Kent County Monument on Twp. Line
	1990	LCRC #5577	Marschall	Kent County Monument

P.A. 345 1990 KENT COUNTY

PEER APPROVED 10/29/99  
CHAIRMAN [Signature]

The position of this corner was previously approved by the Kent County Remonumentation Peer Group, monumented by Norman L. Ochs on 10-23-85 and was recorded per LCRC #4386.

B. Description of corner evidence found and/or method applied in restoring or reestablishing corner:

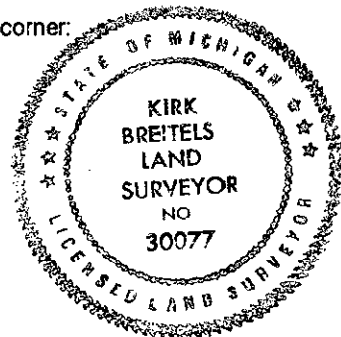
I-1 Found Kent County Monument (Harrison) per witnesses from above LCRC as set on Twp. Line by Norman L. Ochs in place of the 1/2" Rod and 3/4" Pipe he found. Both check with Williams & Works and Kent Co. Wits.

LCRC #4386		LCRC #5577
Spike in 8" Elm	N20°E 23.13'	Nail & Remon. tag 8" Maple S62°W 121.96'
Spike in 18" Apple	S40°E 56.91'	Nail & Remon. tag 18" Twin Ash S36°W 63.82'
Spike in 8" Elm	N70°W 48.51'	Nail & Remon. tag 24" Apple S24°E 56.65'
Spike in 10" Twin Elm	S40°W 63.76'	Nail & Remon. tag 12" Elm N50°E 22.99'
Spike in 16" Maple	S74°W 166.42'	C/L Road is 20' South
S 1/4 cor. Sec. 35 Ensley is West	152.22'	

The selected location is accepted by me and is generally accepted by professional surveyors as the best available evidence of the position of the original corner.

C. Description of monument for corner and accessories established to perpetuate locating the position of the corner:

I-1 Standard Kent County Monument	
Nail & KC Remon. tag E. side Twin 22" Ash	S36°W 63.66'
Nail & KC Remon. tag SE side Twin 24" Elm	N50°E 24.55'
Nail & KC Remon. tag N. side Twin 15" Oak	N75°W 54.33'
Nail & KC Remon. tag E. side 10" Oak	N00°E 41.21'
Nail & KC Remon. tag W. side 48" Maple	S50°W 115.76'
S 1/4 corner Sec. 35-11-11 (Newaygo Co. Mon.)	West 151.81'
C/L Road is South 20'	



Signed by [Signature]  
Surveyor's Michigan License No. 30077

Date 10/28/99