

SECTION

KENT COUNTY REMONUMENTATION

LAND CORNER RECORDATION CERTIFICATE
Filing Requirement of Act 74, Mich. P.A. 1970

\$7.00
\$2.00

MAY 22 2000

SECTION

For corners in
KENT COUNTY

Located In:	Corner Code #
Solon Twp.	I-7
T10N R 11W	
T R	
T R	
T R	
T R	
S T R	
S T R	
S T R	
S T R	

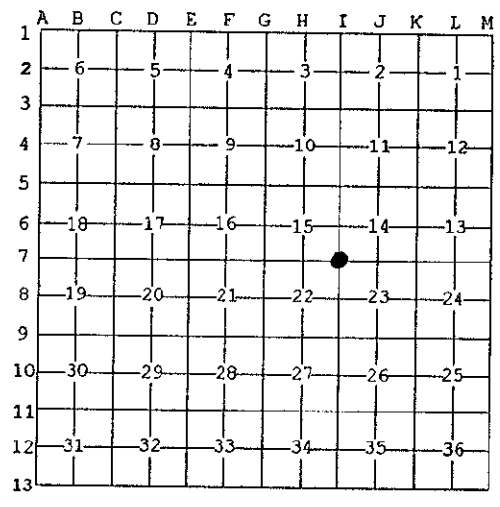
- 1. Public Land Survey
- 2. Property Controlling in Section
- 3. Miscellaneous Property in Sec.

STATE OF MICHIGAN
COUNTY OF KENT
RECEIVED FOR RECORD
1999 MAR 24 AM 8:00
REG. OF DEEDS
11093
Register of Deeds Stamp & File Number

- 4. Lot No. _____, Recorded Plat _____
- 5. Private Claims _____

I, Kirk Breitels, in a field survey on Jan. 12, 1999 do hereby state that under requirements of P.A. 74, Michigan P.A. of 1970, the corner points mentioned in lines 1 and 2 above were in conformance with regulations and rules therefore as required in the current manual of survey instructions of the United States Department of the Interior, Bureau of Land Management or by a decree of a Court of Law and/or that the corner points mentioned in lines 3, 4 and 5 above were in conformance with the rules of the Michigan Board of Land Surveyors or by a Decree of a Court of Law; established, re-established, monumented, recovered, found as expressed below:

NOTE: Not more than 2 corners, all in the same town and range, may be recorded on this certificate.



A. Description of original monument and accessories and/or subsequent restoration:

I-7	1837	GLO	Cathcart	Set Post
	1937	Kent Co. Wits		Stone
	1976	LCRC #953	Bonnema	Bolt
	1981	LCRC #2175	Jonker	Set Kent County Monument
	1990	LCRC #5579	Marschall	Kent County Monument

P.A. 345 1990 KENT COUNTY
PEER APPROVED 2/25/99
CHAIRMAN [Signature]

The position of this corner was previously approved by the Kent County Remonumentation Peer Group, monumented by Robert J. Jonker on 10-1-81 and was recorded per LCRC #2175.

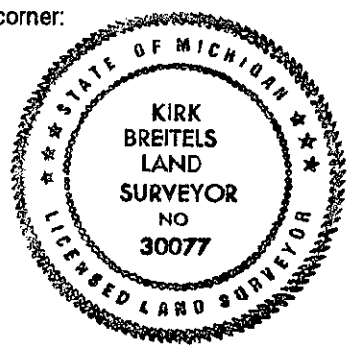
B. Description of corner evidence found and/or method applied in restoring or reestablishing corner:

- I-7 Found Kent County Monument (Harrison) per witnesses from above LCRC as set by Robert J. Jonker in place of the Bolt he found over a Pointed Stone. Both Bolt & Pointed Stone check with LCRC #953 & Kent Co. Wits.
- | LCRC #2175 | LCRC #5579 |
|---|---|
| Nail & Remon. tag P. Pole S40°E 56.84' | Nail & Remon. tag 18" Oak N68°E 49.19' |
| Nail & Remon. tag 10" Oak N74°E 49.19' | Nail & Remon. tag P.P. S40°E 56.79' |
| Nail & Remon. tag 4" Ash N34°E 52.50' | Nail & Remon. tag 16" Cherry S80°E 91.85' |
| Nail & Remon. tag 14" Ash N78°W 112.70' | Nail & Remon. tag 8" Ash N32°E 52.59' |
| C/L Street Sign N44°W 39.9' | |
- On C/L gravel road

The selected location is accepted by me and is generally accepted by professional surveyors as the best available evidence of the position of the original corner.

C. Description of monument for corner and accessories established to perpetuate locating the position of the corner:

- I-7 Standard Kent County Monument
- | | | |
|---|-------|--------|
| Nail & KC Remon. tag N. side 24" Oak | N68°E | 49.09' |
| Nail & KC Remon. tag E. side P. Pole | S40°E | 56.79' |
| Nail & KC Remon. tag S. side 20" Cherry | S80°E | 91.90' |
| Nail & KC Remon. tag W. side 8" Ash | N32°E | 52.54' |
| Cut "X" on top conc. curb | S50°W | 43.10' |
| Cut "X" on top conc. curb | N35°W | 42.77' |



Signed by [Signature]
Surveyor's Michigan License No. 30077

Date 2/25/99