

\$7.00
\$2.00

1997/2/2 2009 KENT COUNTY REMONUMENTATION

SECTION LAND CORNER RECORDATION CERTIFICATE
Filing Requirement of Act 74, Mich. P.A. 1970

For corners in

<u>KENT COUNTY</u> (County)	Located In:	Corner Code #
		Solon Twp.
1. Public Land Survey	T <u>10</u> N R <u>11</u> W	<u>J-3</u>
	T <u> </u> R <u> </u>	<u> </u>
	T <u> </u> R <u> </u>	<u> </u>
	T <u> </u> R <u> </u>	<u> </u>
2. Property Controlling in Section	S <u> </u> T <u> </u> R <u> </u>	<u> </u>
	S <u> </u> T <u> </u> R <u> </u>	<u> </u>
3. Miscellaneous Property in Sec.	S <u> </u> T <u> </u> R <u> </u>	<u> </u>
	S <u> </u> T <u> </u> R <u> </u>	<u> </u>

REG. OFFICERS

STATE OF MICHIGAN
COUNTY OF KENT
RECEIVED FOR RECORD

1999 JUL -9 AM 11:19

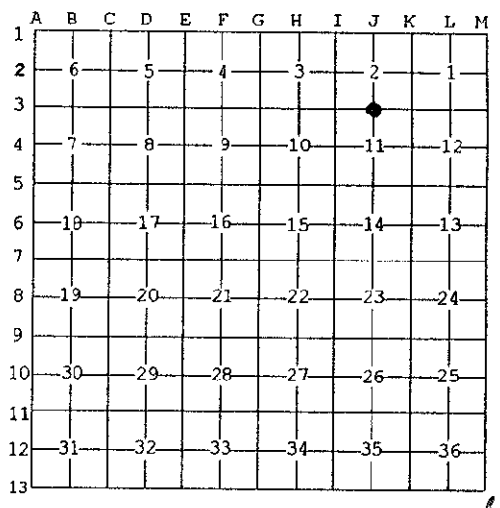
11234

Register of Deeds Stamp & File Number

4. Lot No. _____, Recorded Plat _____

5. Private Claims _____

I, Kirk Breitels, in a field survey on June 1, 19 99 do hereby state that under requirements of P.A. 74, Michigan P.A. of 1970, the corner points mentioned in lines 1 and 2 above were in conformance with regulations and rules therefore as required in the current manual of survey instructions of the United States Department of the Interior, Bureau of Land Management or by a decree of a Court of Law and/or that the corner points mentioned in lines 3, 4 and 5 above were in conformance with the rules of the Michigan Board of Land Surveyors or by a Decree of a Court of Law; established, re-established, monumented, recovered, found as expressed below:



NOTE: Not more than 2 corners, all in the same town and range, may be recorded on this certificate.

A. Description of original monument and accessories and/or subsequent restoration:

J-3	1837	GLO	Cathcart	Not Set
		Kent Co. Wits		No information - corner in Lake
	1988	LCRC #4548	Hackbardt	Set rebar on N-S 1/4 line 100' South of computed N 1/4 corner
	1993	LCRC #6810	W. Glaza	Established computed N 1/4 corner (corner in Lower Lake) midpoint of mile and held old fence lines on West & East sides of Lower Lake for North-South alignment. Did not agree with Hackbardt's location East-West, but OK North-South.

The position of this corner was previously approved by the Kent County Remonumentation Peer Group, as presented by Wallace E. Glaza and recorded per LCRC #6801 on 8-17-93.

B. Description of corner evidence found and/or method applied in restoring or reestablishing corner:

J-3 Nothing found at this corner - in Lower Lake

The selected (as computed) location is accepted by me and is generally accepted by professional surveyors as the best available evidence of the position of the corner.

P.A. 345 1990 KENT COUNTY
PEER APPROVED 6/24/99
CHAIRMAN Henry Hubert

C. Description of monument for corner and accessories established to perpetuate locating the position of the corner:

J-3 Nothing set at this corner - in Lower Lake

See LCRC # 11235, # 11236, # 11237, # 11238
for location of witness monuments.



Signed by Kirk Breitels
Surveyor's Michigan License No. 30077

Date 6/24/99