

\$7.00
\$2.00

SURVEY &
CONVEYANCE
MAY 22 2000

KENT COUNTY REMONUMENTATION

LAND CORNER RECORDATION CERTIFICATE Filing Requirement of Act 74, Mich. P.A. 1970

For corners in SECTION

KENT COUNTY
(County)

Located In:	Corner Code #
T10N R 11W	Solon Twp.
T___ R___	J-7
T___ R___	_____
T___ R___	_____
T___ R___	_____
S___ T___ R___	_____
S___ T___ R___	_____
S___ T___ R___	_____
S___ T___ R___	_____

- 1. Public Land Survey
- 2. Property Controlling in Section
- 3. Miscellaneous Property in Sec.

STATE OF MICHIGAN
COUNTY OF KENT
RECEIVED FOR RECORD
1999 MAR 24 AM 8:00

REG. OF DEEDS

11100
Register of Deeds Stamp & File Number

4. Lot No. _____, Recorded Plat _____
5. Private Claims _____

I, Kirk Breitels, in a field survey on Jan. 28, 1999 do hereby state that under requirements of P.A. 74, Michigan P.A. of 1970, the corner points mentioned in lines 1 and 2 above were in conformance with regulations and rules therefore as required in the current manual of survey instructions of the United States Department of the Interior, Bureau of Land Management or by a decree of a Court of Law and/or that the corner points mentioned in lines 3, 4 and 5 above were in conformance with the rules of the Michigan Board of Land Surveyors or by a Decree of a Court of Law; established, re-established, monumented, recovered, found as expressed below:

NOTE: Not more than 2 corners, all in the same town and range, may be recorded on this certificate.

	A	B	C	D	E	F	G	H	I	J	K	L	M
1													
2	6		5		4		3		2		1		
3													
4	7		8		9		10		11		12		
5													
6	18		17		16		15		14		13		
7													
8	19		20		21		22		23		24		
9													
10	30		29		28		27		26		25		
11													
12	31		32		33		34		35		36		
13													

A. Description of original monument and accessories and/or subsequent restoration:

J-7	1837	GLO	Cathcart	Set Post
	1965	Kent Co. Wits		"X" on Stone
	1978	LCRC #1154	Reda	"T" Iron at E. side of Stone
	1978	LCRC #1210	Nederveld	Stone
	1981	LCRC #2117	Jonker	Set Kent County Monument
	1990	LCRC #5615	Marschall	Kent County Monument

P.A. 345 1990 KENT COUNTY
PEER APPROVED 2/25/99
CHAIRMAN Harry Huber

The position of this corner was previously approved by the Kent County Remonumentation Peer Group, monumented by Robert J. Jonker on 9-25-81 and was recorded per LCRC #2117.

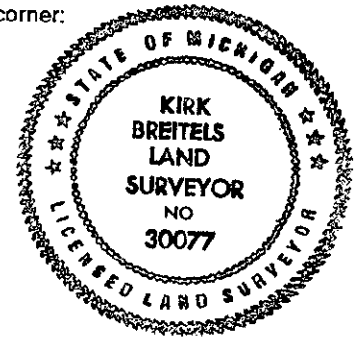
B. Description of corner evidence found and/or method applied in restoring or reestablishing corner:

- J-7 Found Kent County Mon. (Harrison) per witnesses from above LCRC as set by Robert J. Jonker in place of the Stone with "X" on top ("T" Iron next to Stone) he found. Said Stone checks with LCRC's #1154 & 1210 and Kent Co. Wits. LCRC #2117
- Nail & Remon. tag 16" Beech N60°W 10.72'
- Nail & Remon. tag 14" Maple N31°E 26.95'
- Nail & Remon. tag 6" Maple N84°E 14.63'
- Nail & Remon. tag 14" Oak N36°W 21.98'
- At fence corner W-S-E
- Nail & Remon. tag 22" Beech N60°W 10.71'
- Nail & Remon. tag 16" Oak N36°W 21.96'
- Nail & Remon. tag 16" Maple N31°E 27.01'
- Nail & Remon. tag 8" Beech N85°E 15.96'

The selected location is accepted by me and is generally accepted by professional surveyors as the best available evidence of the position of the original corner.

C. Description of monument for corner and accessories established to perpetuate locating the position of the corner:

- J-7 Standard Kent County Monument
- Nail & KC Remon. tag N. side 24" Beech N60°W 10.71'
- Nail & KC Remon. tag E. side 18" Oak N36°W 21.98'
- Nail & KC Remon. tag E. side 20" Cherry N05°W 73.90'
- W. face of 3" Steel fence post N80°E 2.95'
- Newer N-S fence is East 3'
- Wood fence corner post is West 0.5'



Signed by Kirk Breitels
Surveyor's Michigan License No. 30077

Date 2/25/99