

SURVEY & REMONUMENTATION

MAR 08 1999

KENT COUNTY REMONUMENTATION

\$7.00
\$2.00

SECTION

LAND CORNER RECORDATION CERTIFICATE
Filing Requirement of Act 74, Mich. P.A. 1970

STATE OF MICHIGAN
COUNTY OF KENT
RECEIVED FOR RECORD
98 MAR -5 AM 8:35
REG. OF DEEDS
W. J. ...

For corners in

KENT COUNTY

Located In:

Corner Code #

(County)

1. Public Land Survey	T <u>10</u> N	R <u>11</u> W	J-13
	T _____	R _____	_____
	T _____	R _____	_____
	T _____	R _____	_____
2. Property Controlling in Section	S _____	T _____	R _____
	S _____	T _____	R _____
3. Miscellaneous Property in Sec.	S _____	T _____	R _____
	S _____	T _____	R _____

10588

Register of Deeds Stamp & File Number

4. Lot No. _____, Recorded Plat _____
5. Private Claims _____

	A	B	C	D	E	F	G	H	I	J	K	L	M
1													
2		6		5		4		3		2		1	
3													
4		7		8		9		10		11		12	
5													
6		18		17		16		15		14		13	
7													
8		19		20		21		22		23		24	
9													
10		30		29		28		27		26		25	
11													
12		31		32		33		34		35		36	
13													

I, Kirk Breitels, in a field survey on Jan. 7, 1998 do hereby state that under requirements of P.A. 74, Michigan P.A. of 1970, the corner points mentioned in lines 1 and 2 above were in conformance with regulations and rules therefore as required in the current manual of survey instructions of the United States Department of the Interior, Bureau of Land Management or by a decree of a Court of Law and/or that the corner points mentioned in lines 3, 4 and 5 above were in conformance with the rules of the Michigan Board of Land Surveyors or by a Decree of a Court of Law; established, re-established, monumented, recovered, found as expressed below:

NOTE: Not more than 2 corners, all in the same town and range, may be recorded on this certificate.

A. Description of original monument and accessories and/or subsequent restoration:

J-13	1837	GLO	Brookfield	Set Post
	1966	Kent Co. Wits		Iron
	1975	LCRC #833	Bonnema	1/2" Iron
	1980	LCRC #1513	Merdzinski	Set Kent County Monument
	1990	LCRC #5584	Marschall	Kent County Monument

P.A. 345 1990 KENT COUNTY
PEER APPROVED 2/19/98
CHAIRMAN Harry Kuper

The position of this corner was previously approved by the Kent County Remonumentation Peer Group, monumented by John A. Merdzinsk on 12-11-80 and was recorded per LCRC #1513.

B. Description of corner evidence found and/or method applied in restoring or reestablishing corner:

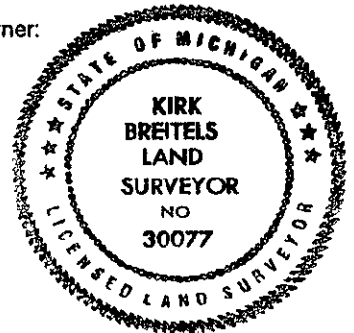
J-13 Found Kent County Monument (Harrison) per witnesses from above LCRC as set by John A. Merdzinski in place of the 3/4" Iron he found over a 1" Iron. Both Irons check with Kent Co. Wit. and LCRC #833.
LCRC #1513 LCRC #5584

Nail & Remon. tag Guy Pole	S30°E 219.34'	Nail & Remon. tag T & P Pole	S30°E 219.16'
Nail & Remon. tag 26" Maple	S75°E 178.51'	Nail & Remon. tag 30" Maple	S75°E 178.44'
Nail & Remon. tag 4" Poplar	N65°E 75.70'	Top corner steel fence post	N00°E 34.03'
Nail & Remon. tag 12" Maple	N45°W 83.11'	Nail & Remon. tag 10" Maple	N70°E 111.64'
Nail & Remon. tag top E. culv.	N70°W 128.82'	Nail & Remon. tag top E. culv.	S80°W 125.46'
Nail & Remon. tag top E. culv.	S80°W 125.55'	Nail & Remon. tag top E. culv.	N70°W 128.79'

The selected location is accepted by me and is generally accepted by professional surveyors as the best available evidence of the position of the original corner.

C. Description of monument for corner and accessories established to perpetuate locating the position of the corner:

J-13 Standard Kent County Monument			
Nail & KC Remon. tag SW side P. Pole	S30°E	219.31'	
Nail & KC Remon. tag N. side 32" Maple	S75°E	178.44'	
Nail & KC Remon. tag S. side 12" Maple	N70°E	111.68'	
Top corner steel fence post	N00°E	34.07'	
Nail & KC Remon. tag top S. side E. culvert	S80°W	125.46'	
Nail & KC Remon. tag top N. side E. culvert	N70°W	128.79'	
Kent Co. Mon. (J-I, 19N, R11W)	East	67.14'	



Signed by Kirk Breitels
Surveyor's Michigan License No. 30077

Date 2/19/98