

MAY 22 2000

ST 00
2000

SECTION

KENT COUNTY REMONUMENTATION

LAND CORNER RECORDATION CERTIFICATE
Filing Requirement of Act 74, Mich. P.A. 1970

For corners in

KENT COUNTY
(County)

Located In:

Corner Code #

1. Public Land Survey

T10N R11W

Solon Twp.

K-1

2. Property Controlling in Section

S

T

3. Miscellaneous Property in Sec.

S

T

4. Lot No. _____, Recorded Plat _____

5. Private Claims _____

I, Kirk Breitels, in a field survey on Aug. 27, 1999 do hereby state that under requirements of P.A. 74, Michigan P.A. of 1970, the corner points mentioned in lines 1 and 2 above were in conformance with regulations and rules therefore as required in the current manual of survey instructions of the United States Department of the Interior, Bureau of Land Management or by a decree of a Court of Law and /or that the corner points mentioned in lines 3, 4 and 5 above were in conformance with the rules of the Michigan Board of Land Surveyors or by a Decree of a Court of Law; established, re-established, monumented, recovered, found as expressed below:

NOTE: Not more than 2 corners, all in the same town and range, may be recorded on this certificate.

A. Description of original monument and accessories and/or subsequent restoration:

K-1 1837	GLO	Cathcart	Set Post
	Kent Co. Wits		Mon. Box
1981	LCRC #3564	VanKooten	3/4" Iron in Mon. Box
1985	LCRC #4388	Ochs	Set Kent County Monument on Twp. line (Mon. Box 4.19' North)
1990	LCRC #5585	Marschall	Kent County Monument

P.A. 345 1990 KENT COUNTY

PEER APPROVED 9/23/99
CHAIRMAN [Signature]

The position of this corner was previously approved by the Kent County Remonumentation Peer Group, monumented by Norman L. Ochs on 10-23-85 and was recorded per LCRC #4388.

B. Description of corner evidence found and/or method applied in restoring or reestablishing corner:

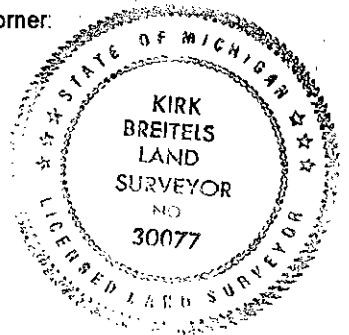
K-1 Found Kent County Monument (Harrison) per witnesses from above LCRC as set on Twp. line by Norman L. Ochs, 4.19' South of 3/4" Iron he found in a Mon. Box. Iron in Mon. box checks with Kent Co. Wits. and LCRC #3564.

LCRC #4388		LCRC #5585	
"X" in curb	S45°E 33.87'	"X" in curb	S50°W 32.57'
"X" in curb	S45°W 32.57'	"X" in curb	S45°E 33.85'
PK Nail in P. Pole	SSE 138.13'	Nail & Remon. tag P. Pole	S15°E 138.06'
Tele. Riser	S45°E 73.40'	NW corner house	S35°E 180.51'
		Mon. Box	N05°E 4.25'
		Nail & Remon. tag 6" Tw. Cherry	N25°E 41.56'

The selected location is accepted by me and is generally accepted by professional surveyors as the best available evidence of the position of the original corner.

C. Description of monument for corner and accessories established to perpetuate locating the position of the corner:

K-1 Standard Kent County Monument			
Nail & KC Remon. tag E. side Tw. 12" Cherry	N25°E	41.74'	
"X" cut in curb	S50°W	32.59'	
"X" cut in curb	S45°E	33.88'	
Nail & KC Remon. tag W. side P. Pole	S15°E	138.06'	
NW corner of house	S35°E	180.51'	
Newaygo Co. Mon. (L-13 Ensley)	West	211.38'	
C/L E-W asphalt road is North 2' ±			



Signed by [Signature]

Date 10/20/99

Surveyor's Michigan License No. 30077

1999 NOV -4 AM 8:35
STATE OF MICHIGAN
COUNTY OF KENT
RECEIVED FOR RECORD

REG. OF DEEDS
[Signature]

11473
Register of Deeds Stamp & File Number

	A	B	C	D	E	F	G	H	I	J	K	L	M
1													
2	6		5		4		3		2		1		
3													
4	7		8		9		10		11		12		
5													
6	18		17		16		15		14		13		
7													
8	19		20		21		22		23		24		
9													
10	30		29		28		27		26		25		
11													
12	31		32		33		34		35		36		
13													