

\$7.00  
\$2.00

MAY 22 2000

# KENT COUNTY REMONUMENTATION

## SECTION

### LAND CORNER RECORDATION CERTIFICATE Filing Requirement of Act 74, Mich. P.A. 1970

REG. OF DEEDS

STATE OF MICHIGAN  
COUNTY OF KENT  
RECEIVED FOR RECORD  
1999 MAR 24 AM 8:00

For corners in  
KENT COUNTY  
(County)

Located In:	Corner Code #
Solon Twp.	
T <u>10</u> N R <u>11</u> W	K-10
T ___ R ___	_____
T ___ R ___	_____
T ___ R ___	_____
T ___ R ___	_____
S ___ T ___ R ___	_____
S ___ T ___ R ___	_____
S ___ T ___ R ___	_____
S ___ T ___ R ___	_____

11105

Register of Deeds Stamp & File Number

4. Lot No. \_\_\_\_\_, Recorded Plat \_\_\_\_\_  
5. Private Claims \_\_\_\_\_

I, Kirk Breitels, in a field survey on Jan. 12, 1999 do hereby state that under requirements of P.A. 74, Michigan P.A. of 1970, the corner points mentioned in lines 1 and 2 above were in conformance with regulations and rules therefore as required in the current manual of survey instructions of the United States Department of the Interior, Bureau of Land Management or by a decree of a Court of Law and /or that the corner points mentioned in lines 3, 4 and 5 above were in conformance with the rules of the Michigan Board of Land Surveyors or by a Decree of a Court of Law; established, re-established, monumented, recovered, found as expressed below:

NOTE: Not more than 2 corners, all in the same town and range, may be recorded on this certificate.

	A	B	C	D	E	F	G	H	I	J	K	L	M
1													
2	6		5		4		3		2		1		
3													
4	7		8		9		10		11		12		
5													
6	18		17		16		15		14		13		
7													
8	19		20		21		22		23		24		
9													
10	30		29		28		27		26		25		
11													
12	31		32		33		34		35		36		
13													

#### A. Description of original monument and accessories and/or subsequent restoration:

K-10 1837	GLO	Cathcart	Set Post
1941-52-66	Kent Co. Wits		Iron - 1 3/4" Shaft
1945	Williams & Works		Iron
1966	MSHD		1 3/4" Shaft
1987	LCRC #4549	Hackbardt	1 3/4" Iron Shaft
1992	LCRC #6595	Bueche	Set Kent County Monument

The position of this corner was previously approved by the Kent County Remonumentation Peer Group, monumented by John C. Bueche on 10-12-92 and was recorded per LCRC #6595.

P.A. 345 1990 KENT COUNTY  
PEER APPROVED 2/25/99  
CHAIRMAN [Signature]

#### B. Description of corner evidence found and/or method applied in restoring or reestablishing corner:

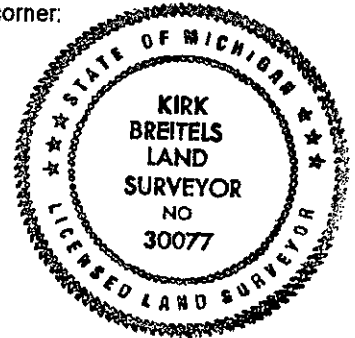
✓ K-10 Found Kent County Monument (Harrison) per witnesses from above LCRC as set by John C. Bueche in place of the 1 3/4" Pipe over a 1 1/2" Pipe he found. Both Pipes check with all above.  
LCRC #6595

Nail & MDOT tag E. side 24" Walnut	N30°W	64.16'
SE corner conc. blk. porch, house #14413	N50°W	108.74'
Nail & Remon. tag N. side P. Pole	S55°W	73.13'
Nail & Remon. tag S. side P. Pole	S75°E	79.01'
Nail & Remon. tag SE side wood fc. post	N45°E	46.95'
C/L bit. N-S, West 2' ±, On C/L bit. E.		

The selected location is accepted by me and is generally accepted by professional surveyors as the best available evidence of the position of the original corner.

#### C. Description of monument for corner and accessories established to perpetuate locating the position of the corner:

K-10 Standard Kent County Monument		
Nail & MDOT tag E. side 26" Walnut	N30°W	64.22'
SE corner conc. blk. porch, house #14413	N45°W	104.15'
Nail & KC Remon. tag N. side P. Pole	S55°W	73.20'
Nail & KC Remon. tag S. side P. Pole	S75°E	79.07'
Nail & KC Remon. tag SE side wood fence post	N45°E	47.12' (leaning)



Signed by [Signature]  
Surveyor's Michigan License No. 30077

Date 2/25/99