

**SURVEY & REMONUMENTATION**

MAR 081

**KENT COUNTY REMONUMENTATION**

\$7.00  
\$2.00

SECTIK

**LAND CORNER RECORDATION CERTIFICATE**  
Filing Requirement of Act 74, Mich. P.A. 1970

For corners in

KENT COUNTY  
(County)

Located In:

Corner Code #

- |                                    |                             |             |
|------------------------------------|-----------------------------|-------------|
| 1. Public Land Survey              | T <u>10</u> N R <u>11</u> W | <u>K-13</u> |
|                                    | T _____ R _____             | _____       |
|                                    | T _____ R _____             | _____       |
|                                    | T _____ R _____             | _____       |
| 2. Property Controlling in Section | S _____ T _____ R _____     | _____       |
|                                    | S _____ T _____ R _____     | _____       |
| 3. Miscellaneous Property in Sec.  | S _____ T _____ R _____     | _____       |
|                                    | S _____ T _____ R _____     | _____       |

4. Lot No. \_\_\_\_\_, Recorded Plat \_\_\_\_\_  
5. Private Claims \_\_\_\_\_

I, Kirk Breitels, in a field survey on Jan. 2, 1998 do hereby state that under requirements of P.A. 74, Michigan P.A. of 1970, the corner points mentioned in lines 1 and 2 above were in conformance with regulations and rules therefore as required in the current manual of survey instructions of the United States Department of the Interior, Bureau of Land Management or by a decree of a Court of Law and/or that the corner points mentioned in lines 3, 4 and 5 above were in conformance with the rules of the Michigan Board of Land Surveyors or by a Decree of a Court of Law; established, re-established, monumented, recovered, found as expressed below:

NOTE: Not more than 2 corners, all in the same town and range, may be recorded on this certificate.

**A. Description of original monument and accessories and/or subsequent restoration:**

- |      |      |               |            |                          |
|------|------|---------------|------------|--------------------------|
| K-13 | 1837 | GLO           | Brookfield | Set Post                 |
|      | 1966 | Kent Co. Wits |            | Iron                     |
|      | 1975 | LCRC #833     | Bonnema    | 1" Solid Iron            |
|      | 1980 | LCRC #1505    | Merdzinski | Set Kent County Monument |
|      | 1990 | LCRC #5619    | Marschall  | Kent County Monument     |

P.A. 345 1990 KENT COUNTY  
PEER APPROVED 2/19/98  
CHAIRMAN Harvey Kuber

The position of this corner was previously approved by the Kent County Remonumentation Peer Group, monumented by John A. Merdzinski on 12-10-80 and was recorded per LCRC #1505.

**B. Description of corner evidence found and/or method applied in restoring or reestablishing corner:**

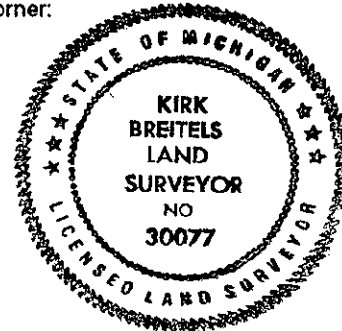
K-13 Found Kent County Monument (Harrison) per witnesses from above LCRC as set by John A. Merdzinski in place of the 1" Solid Iron he found. Said Iron checks with Kent Co. Wits. and LCRC #833.

- |                               |               |                             |               |
|-------------------------------|---------------|-----------------------------|---------------|
| LCRC #1505                    | LCRC #5619    |                             |               |
| Nail & Remon. tag P. Pole     | N65°E 112.86' | Nail & Remon. tag P. Pole   | N72°W 181.74' |
| Nail & Remon. tag P. Pole     | N60°W 181.86' | Nail & Remon. tag P. Pole   | N60°E 112.80' |
| 3/4" Iron in Mon. Box         | N90°E 34.39'  | SW cor. conc. base to Tele. | S40°E 79.45'  |
| SW cor. conc. base MBT box    | S40°E 79.50'  | Spike on box                | N90°E 34.44'  |
| C/L bit. rd. N-S is E 13.5' ± |               |                             |               |
| On C/L bit. rd. N. ext. S.    |               |                             |               |

The selected location is accepted by me and is generally accepted by professional surveyors as the best available evidence of the position of the original corner.

**C. Description of monument for corner and accessories established to perpetuate locating the position of the corner:**

- K-13 Standard Kent County Monument
- |  |       |         |
|--|-------|---------|
| Nail & KC Remon. tag S. side P. Pole     | N72°W | 181.74' |
| Nail & KC Remon. tag S. side P. Pole     | N60°E | 113.98' |
| SW corner conc. base to Tele. Box        | S40°E | 79.45'  |
| "X" cut on top of curb (3' N. of S. end) | S35°E | 59.58'  |
| "X" cut on top of curb (3' S. of N. end) | N25°E | 62.68'  |
| Kent Co. Mon. (K-1, T9N, R11W)           | East  | 34.45'  |
| C/L N-S bit. rd. is E. 13.5' ±           |       |         |
| On C/L bit. rd. N. ext. S.               |       |         |



Signed by Kirk Breitels  
Surveyor's Michigan License No. 30077

Date 2/19/98

STATE OF MICHIGAN  
COUNTY OF KENT  
RECEIVED FOR RECORD  
98 MAR -5 AM 8:35  
REG. OF DEEDS  
*W. J. [Signature]*  
10589  
Register of Deeds Stamp & File Number

A	B	C	D	E	F	G	H	I	J	K	L	M
1												
2	6		5		4		3		2		1	
3												
4	7		8		9		10		11		12	
5												
6	18		17		16		15		14		13	
7												
8	19		20		21		22		23		24	
9												
10	30		29		28		27		26		25	
11												
12	31		32		33		34		35		36	
13												