

\$7.00  
\$2.00

MAY 22 2000

SECTION

KENT COUNTY REMONUMENTATION

LAND CORNER RECORDATION CERTIFICATE  
Filing Requirement of Act 74, Mich. P.A. 1970

For corners in

KENT COUNTY  
(County)

Located In:

Corner Code #

Solon Twp.

- 1. Public Land Survey T10N R11W L-6
- T R
- T R
- T R
- 2. Property Controlling in Section S T R
- S T R
- 3. Miscellaneous Property in Sec. S T R
- S T R

REG. OF DEEDS

*[Signature]*

STATE OF MICHIGAN  
COUNTY OF KENT  
RECEIVED FOR RECORD  
1999 NOV -4 AM 8:35

11478

Register of Deeds Stamp & File Number

- 4. Lot No. \_\_\_\_\_, Recorded Plat \_\_\_\_\_
- 5. Private Claims \_\_\_\_\_

I, Kirk Breitels, in a field survey on Aug. 11, 1999 do hereby state that under requirements of P.A. 74, Michigan P.A. of 1970, the corner points mentioned in lines 1 and 2 above were in conformance with regulations and rules therefore as required in the current manual of survey instructions of the United States Department of the Interior, Bureau of Land Management or by a decree of a Court of Law and /or that the corner points mentioned in lines 3, 4 and 5 above were in conformance with the rules of the Michigan Board of Land Surveyors or by a Decree of a Court of Law; established, re-established, monumented, recovered, found as expressed below:

NOTE: Not more than 2 corners, all in the same town and range, may be recorded on this certificate.

1	A	B	C	D	E	F	G	H	I	J	K	L	M
2	6		5		4		3		2		1		
3													
4	7		8		9		10		11		12		
5													
6	18		17		16		15		14		13		
7													
8	19		20		21		22		23		24		
9													
10	30		29		28		27		26		25		
11													
12	31		32		33		34		35		36		
13													

A. Description of original monument and accessories and/or subsequent restoration:

- L-6 1837 GLO Not Set
- 1905 Williams & Works Set Pine Stake and Stone on N-S 1/4 line
- 1915 Williams & Works Did not find 1905 Center - Set "Point" for Center on E-W 1/4 line
- 18" Elm NW 85' 5" B. Cherry SW 56.6'
- 1987 LCRC #5099 Hackbardt Set 1/2" Rebar at intersection of 1/4 lines
- 8" Maple N70°W 101.3' 5" Thornapple N05°W 31.0' 8" Maple clump N45°E 53.7'

P.A. 345 1990 KENT COUNTY  
PEER APPROVED 8/26/99  
CHAIRMAN *[Signature]*

B. Description of corner evidence found and/or method applied in restoring or reestablishing corner:

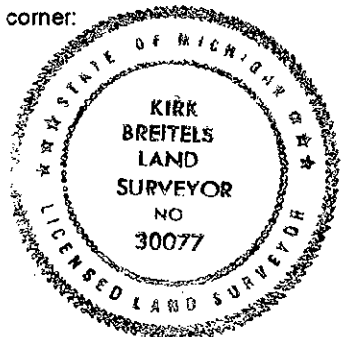
- L-6 Found 1/2" Rebar per the remaining witnesses:
- Cut Nail W. side 8" Thornapple N05°W 31.10' C/L 12" Maple N70°W 101'
- Cut Nail NW side 10" Maple Clump N45°E 53.73'

Said 1/2" Rebar is 0.1' W. and 0.2' S. from intersection of 1/4 lines

The 1/2" Rebar is accepted by me and is generally accepted by professional surveyors as the best available evidence of the position of the corner.

C. Description of monument for corner and accessories established to perpetuate locating the position of the corner:

- L-6 Set Standard Kent County Monument in place of the 1/2" Rebar.
- Nail & KC Remon. tag W. side 8" Thornapple N05°W 31.12'
- Cut Nail NW side 10" Maple clump N45°E 53.73'
- Nail & KC Remon. tag W. side 8" Apple S00°E 75.91'
- Nail & KC Remon. tag S. side Tw. 10" Maple N75°W 101.95'
- Nail & KC Remon. tag NE side 5" Apple S45°E 89.04'



Signed by *[Signature]*  
Surveyor's Michigan License No. 30077

Date 10/28/99