

MAY 22 2000

\$7.00
\$2.00

SECTION

KENT COUNTY REMONUMENTATION

LAND CORNER RECORDATION CERTIFICATE
Filing Requirement of Act 74, Mich. P.A. 1970

STATE OF MICHIGAN
COUNTY OF KENT
RECEIVED FOR RECORD
1999 NOV - 4 AM 8:36
REG. OF DEEDS

For corners in:

KENT COUNTY
(County)

Located In:	Corner Code #
T10N R11W	L-7
T___ R___	_____
T___ R___	_____
T___ R___	_____
S___ T___ R___	_____
S___ T___ R___	_____
S___ T___ R___	_____
S___ T___ R___	_____

1. Public Land Survey

2. Property Controlling in Section

3. Miscellaneous Property in Sec.

4. Lot No. _____, Recorded Plat _____

5. Private Claims _____

11476

Register of Deeds Stamp & File Number

I, Kirk Breitels, in a field survey on Aug. 26, 1999 do hereby state that under requirements of P.A. 74, Michigan P.A. of 1970, the corner points mentioned in lines 1 and 2 above were in conformance with regulations and rules therefore as required in the current manual of survey instructions of the United States Department of the Interior, Bureau of Land Management or by a decree of a Court of Law and /or that the corner points mentioned in lines 3, 4 and 5 above were in conformance with the rules of the Michigan Board of Land Surveyors or by a Decree of a Court of Law; established, re-established, monumented, recovered, found as expressed below:

NOTE: Not more than 2 corners, all in the same town and range, may be recorded on this certificate.

1	A	B	C	D	E	F	G	H	I	J	K	L	M
2		6		5		4		3		2		1	
3													
4		7		8		9		10		11		12	
5													
6		18		17		16		15		14		13	
7													
8		19		20		21		22		23		24	
9													
10		30		29		28		27		26		25	
11													
12		31		32		33		34		35		36	
13													

A. Description of original monument and accessories and/or subsequent restoration:

L-7 1837	GLO	Cathcart	Set Post
1966	Kent Co. Wits		1 1/4" Pipe
1988	LCRC #4551	Hackbardt	3/4" Iron
1991	LCRC #5760	Roosien	Set Kent County Monument

P.A. 345 1900 KENT COUNTY
PEER APPROVED 9/23/99
CHAIRMAN Hans Huber

The position of this corner was previously approved by the Kent County Remonumentation Peer Group, monumented by Kevin Roosien on 2-15-91 and was recorded per LCRC #5760.

B. Description of corner evidence found and/or method applied in restoring or reestablishing corner:

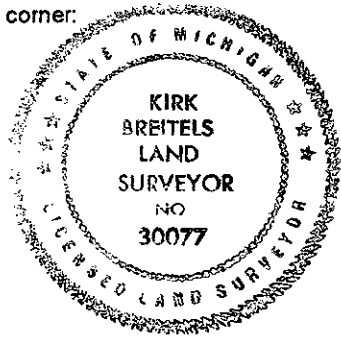
L-7 Found Kent County Monument (Harrison) per witnesses from above LCRC as set by Kevin Roosien in place of the 1 1/2" Iron Pipe he found. Said 1 1/2" Iron Pipe checks with surveys of others. LCRC #4551 appears to be for corner L-8. Kent Co. Wits. are gone.

LCRC #5760	Nail & Remon. tag W. side 8" Cherry	South	146.41'
	Nail & Remon. tag S. side 20" Cherry	N75°E	64.40'
	Nail & Remon. tag SW side wood post	S50°E	1.20'
	Nail & Remon. tag N. side 4" Hawthorne	N85°W	38.64'
	Nail & Remon. tag W. side 4" Hawthorne	N15°W	16.52'

The selected location is accepted by me and is generally accepted by professional surveyors as the best available evidence of the position of the original corner.

C. Description of monument for corner and accessories established to perpetuate locating the position of the corner:

L-7 Standard Kent County Monument	Nail & KC Remon. tag S. side 24" Cherry	N75°E	64.40'
	Nail & KC Remon. tag SW side wood post	S50°E	1.20'
	Nail & KC Remon. tag N. side 6" Hawthorne	N85°W	38.64'
	Nail & KC Remon. tag W. side 6" Hawthorne	N15°W	16.52'
	Nail & KC Remon. tag W. side 4" Elm	S05°E	14.69'
	Fence corner to South & East is East 1'		



Signed by Kirk Breitels
Surveyor's Michigan License No. 30077

Date 10/28/99