

\$7.00
\$2.00

MAY 22 2000

KENT COUNTY REMONUMENTATION

SECTION

LAND CORNER RECORDATION CERTIFICATE Filing Requirement of Act 74, Mich. P.A. 1970

For corners in

KENT COUNTY
(County)

Located In:

Corner Code #

1. Public Land Survey

T10N R 11W M-4 Solone Twp.
~~T10N R 10W A 4 Nelson Twp.~~

2. Property Controlling in Section

S T R

3. Miscellaneous Property in Sec.

S T R
S T R
S T R

STATE OF MICHIGAN
COUNTY OF KENT
RECEIVED FOR RECORD
1999 MAR 24 AM 9:00

11113

Register of Deeds Stamp & File Number

4. Lot No. _____, Recorded Plat _____
5. Private Claims _____

I, Kirk Breitels, in a field survey on Jan. 12, 1999 do hereby state that under requirements of P.A. 74, Michigan P.A. of 1970, the corner points mentioned in lines 1 and 2 above were in conformance with regulations and rules therefore as required in the current manual of survey instructions of the United States Department of the Interior, Bureau of Land Management or by a decree of a Court of Law and/or that the corner points mentioned in lines 3, 4 and 5 above were in conformance with the rules of the Michigan Board of Land Surveyors or by a Decree of a Court of Law; established, re-established, monumented, recovered, found as expressed below:

NOTE: Not more than 2 corners, all in the same town and range, may be recorded on this certificate.

	A	B	C	D	E	F	G	H	I	J	K	L	M
1													
2	6		5		4		3		2		1		
3													
4	7		8		9		10		11		12		
5													
6	10		17		16		15		14		13		
7													
8	19		20		21		22		23		24		
9													
10	30		29		28		27		26		25		
11													
12	31		32		33		34		35		36		
13													

A. Description of original monument and accessories and/or subsequent restoration:

M-4 1836	GLO	Brookfield	Set Post
1961	Kent Co. Wits		1" Iron
1980	LCRC #1304	Hackbardt	Mon. Box
1981	LCRC #2005	Jonker	Set Kent County Monument in Mon. Box
1990	LCRC #5593	Marschall	Kent County Monument

P.A. 345 1990 KENT COUNTY
PEER APPROVED 2/25/99
CHAIRMAN [Signature]

The position of this corner was previously approved by the Kent County Remonumentation Peer Group, monumented by Robert J. Jonker on 8-20-81 and was recorded per LCRC #2005.

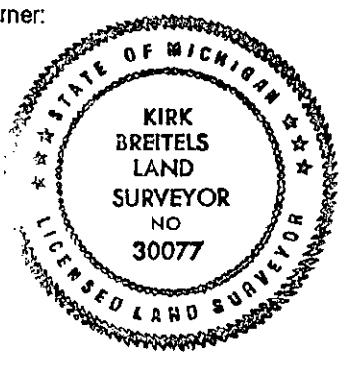
B. Description of corner evidence found and/or method applied in restoring or reestablishing corner:

M-4 Found Kent County Monument (Harrison) per witnesses from above LCRC as set by Robert J. Jonker in place of the 1" Iron he found inside a Mon. Box. Said Iron checks with Kent Co. Wits. and LCRC #1304.			
LCRC #2005	LCRC #5593		
PK Nail on curb radius	N40°E 42.55'	Nail & Remon. tag 16" Ash	S63°W 56.63'
PK Nail on curb radius	S53°E 41.15'	Nail & Remon. tag 20" Tw. Maple	S30°W 61.96'
Nail & Remon. tag 10" Ash	S63°W 56.71'	PK Nail in curb	S55°E 44.18'
Nail & Remon. tag 16" Tw. Maple	S33°W 61.97'	Nail & Remon. tag 36" Maple	S75°W 97.76'
		Nail & Remon. Tag P. P.	S80°E 60.58'

The selected location is accepted by me and is generally accepted by professional surveyors as the best available evidence of the position of the original corner.

C. Description of monument for corner and accessories established to perpetuate locating the position of the corner:

M-4 Standard Kent County Monument			
Nail & KC Remon. tag SE side 20" Ash	S63°W	56.63'	
Nail & KC Remon. tag NW side Tw. 24" Maple	S30°W	62.16'	
PK Nail & KC Remon. tag in curb joint	S55°E	41.12'	
Nail & KC Remon. tag S. side 38" Maple	S75°W	97.76'	
Nail & KC Remon. tag N. side P. Pole	S80°E	60.64'	



Signed by [Signature]
Surveyor's Michigan License No. 30077

Date 2/25/99