

**SURVEY & REMONUMENTATION**

MAR 08 1999

**KENT COUNTY REMONUMENTATION**

\$7.00  
\$2.00

SECTION

**LAND CORNER RECORDATION CERTIFICATE**  
Filing Requirement of Act 74, Mich. P.A. 1970

For corners in

KENT COUNTY

(County)

Located In:

Corner Code #

1. Public Land Survey

T 9N R 11W	M-1
T R	common with
T 9N R 10W	A-1
T 10N R 11W	M-13
T 10N R 10W	A-13
S T R	
S T R	
S T R	

2. Property Controlling in Section

3. Miscellaneous Property in Sec.

4. Lot No. \_\_\_\_\_, Recorded Plat \_\_\_\_\_  
5. Private Claims \_\_\_\_\_

I, Kirk Breitels, in a field survey on Feb. 10, 1998 do hereby state that under requirements of P.A. 74, Michigan P.A. of 1970, the corner points mentioned in lines 1 and 2 above were in conformance with regulations and rules therefore as required in the current manual of survey instructions of the United States Department of the Interior, Bureau of Land Management or by a decree of a Court of Law and/or that the corner points mentioned in lines 3, 4 and 5 above were in conformance with the rules of the Michigan Board of Land Surveyors or by a Decree of a Court of Law; established, re-established, monumented, recovered, found as expressed below:

NOTE: Not more than 2 corners, all in the same town and range, may be recorded on this certificate.

A. Description of original monument and accessories and/or subsequent restoration:

M-1	1837	GLO	Brookfield	Set Post
	1956	Kent Co. Wits		Stone
	1959-68	MSHD		"X" in pavement
	1973	LCRC #479	Spicer	PK Nail
	1982	LCRC #2810	Jonker	Set Kent County Monument
	1990	LCRC #5624	Marschall	Kent County Monument

P.A. 345 1990 KENT COUNTY  
PEER APPROVED 2/19/98  
CHAIRMAN Harry Hubert

The position of this corner was previously approved by the Kent County Remonumentation Peer Group, monumented by Robert J. Jonker on 4-1-82 and was recorded per LCRC #2810.

B. Description of corner evidence found and/or method applied in restoring or reestablishing corner:

M-1 Found Kent County Monument (Harrison) per witnesses from above LCRC as set by Robert J. Jonker in place of the PK Nail he found. Said PK Nail checks with Kent Co. Wits., MSHD, and LCRC #479.

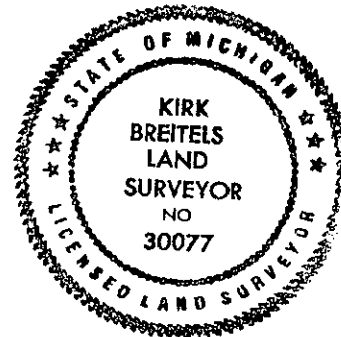
LCRC #2810	LCRC #5624
Nail & Remon. tag P. Pole N45°W 76.65'	Nail & Remon. tag P. Pole N45°W 76.59'
Nail & Remon. tag T. Pole S70°W 58.20'	Nail & Remon. tag P. Pole N70°E 145.20'
Nail & Remon. tag P. Pole N70°E 148.82'	Face of 10"x10" Util. Ped S55°E 66.93'
Face of Util. Ped. at base S55°E 66.97'	Nail & Remon. tag 20" Maple N15°W 125.26'
C/L "X" of int. is 1' East ±	Nail & Remon. tag 30" Maple N80°E 147.39'
	NE cor. Hsc. #13189 S31°W 137.24'

The selected location is accepted by me and is generally accepted by professional surveyors as the best available evidence of the position of the original corner.

C. Description of monument for corner and accessories established to perpetuate locating the position of the corner:

M-1 Standard Kent County Monument

Nail & KC Remon. tag SW side P. Pole	N45°W 76.62'
Nail & KC Remon. tag N. side P. Pole	N70°E 145.20'
Nail & KC Remon. tag E. side 24" Maple	N15°W 125.26'
Nail & KC Remon. tag S. side 34" Maple	N80°E 147.39'
NE corner foundation of house #13189	S31°W 137.28'
Concrete Monument (2 <sup>nd</sup> order GPS point)	S40°E 73.84'
C/L of "X" pavement is 1' East ±	



Signed by Kirk Breitels  
Surveyor's Michigan License No. 30077

Date 2/19/98

STATE OF MICHIGAN  
COUNTY OF KENT  
REGISTERED FOR RECORDING

98 MAR -5 AM 8:35

REG. OF DEEDS

10576  
Register of Deeds Stamp & File Number

	A	B	C	D	E	F	G	H	I	J	K	L	M
1													
2	6		5		4		3		2		1		
3													
4	7		8		9		10		11		12		
5													
6	18		17		16		15		14		13		
7													
8	19		20		21		22		23		24		
9													
10	30		29		28		27		26		25		
11													
12	31		32		33		34		35		36		
13													