

SURVEY &
REMONUMENTATION

\$7.00
\$2.00

MAY 22 2000

KENT COUNTY REMONUMENTATION

SECTION

LAND CORNER RECORDATION CERTIFICATE
Filing Requirement of Act 74, Mich. P.A. 1970

For corners in

KENT COUNTY

(County)

Located In:

Corner Code #

1. Public Land Survey
T ___ R ___
T ___ R ___
T ___ R ___
T ___ R ___
2. Property Controlling
in Section S ___ I T 10NR 11W Wit. Mon. on
S ___ T ___ R ___ E-W 1/4 Line
3. Miscellaneous
Property in Sec. S ___ T ___ R ___ (Solon Twp.)
S ___ T ___ R ___

4. Lot No. _____, Recorded Plat _____
5. Private Claims _____

I, Kirk Breitels, in a field survey on Nov. 1, 1999 do hereby state that under requirements of P.A. 74, Michigan P.A. of 1970, the corner points mentioned in lines 1 and 2 above were in conformance with regulations and rules therefore as required in the current manual of survey instructions of the United States Department of the Interior, Bureau of Land Management or by a decree of a Court of Law and /or that the corner points mentioned in lines 3, 4 and 5 above were in conformance with the rules of the Michigan Board of Land Surveyors or by a Decree of a Court of Law; established, re-established, monumented, recovered, found as expressed below:

NOTE: Not more than 2 corners, all in the same town and range, may be recorded on this certificate.

- A. Description of original monument and accessories and/or subsequent restoration:
No Information

- B. Description of corner evidence found and/or method applied in restoring or reestablishing corner:
Established location on E-W 1/4 line (S. line of NW 1/4) - computed C 1/4 corner at Intersection of 1/4 lines.

1545.21' to W 1/4 corner
1082.64' to C 1/4 corner (computed)

The above location is accepted by me and is generally accepted by professional surveyors as the best available evidence of the position of the Witness Corner.

- C. Description of monument for corner and accessories established to perpetuate locating the position of the corner:

Set Kent County Witness Monument as described above
Nail & KC Remon. tag S. side 12" Maple S85°W 5.47'
Nail & KC Remon. tag SE side 24" Oak S35°W 41.52'
Nail & KC Remon. tag N. side 12" Maple S15°E 30.12'
Nail & KC Remon. tag N. side 8" Maple S85°E 9.98'
In remains of East-West fence line
SE corner of field is East 40' ±

STATE OF MICHIGAN
COUNTY OF KENT
RECEIVED FOR RECORD
1999 DEC 15 AM 8:56
REG. OF DEEDS

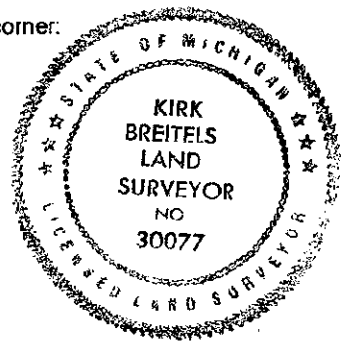
"other"
corner #9

11596

Register of Deeds Stamp & File Number

	A	B	C	D	E	F	G	H	I	J	K	L	M
1													
2	6		5		4		3		2		1		
3													
4	7		8		9		10		11		12		
5													
6	18		17		16		15		14		13		
7													
8	19		20		21		22		23		24		
9													
10	30		29		28		27		26		25		
11													
12	31		32		33		34		35		36		
13													

P.A. 345 1990 KENT COUNTY
PEER APPROVED 9/23/99
CHAIRMAN Harry Huber



Signed by Kirk Breitels
Surveyor's Michigan License No. 30077

Date 12/6/99