

\$7.00
\$2.00

MAY 24 2000

KENT COUNTY REMONUMENTATION

SECTION

LAND CORNER RECORDATION CERTIFICATE Filing Requirement of Act 74, Mich. P.A. 1970

For corners in
KENT COUNTY

Located In:	Corner Code #
(County)	Solon Twp.
	J-2
1. Public Land Survey	T 10N R 11W
	T R
	T R
	T R
	T R
2. Property Controlling in Section	S T R
	S T R
3. Miscellaneous Property in Sec.	S T R
	S T R

REG. OF DEEDS

STATE OF MICHIGAN
COUNTY OF KENT
RECEIVED FOR RECORD
1999 MAR 24 AM 8:00

11098

Register of Deeds Stamp & File Number

4. Lot No. _____, Recorded Plat _____
5. Private Claims _____

I, Kirk Breitels, in a field survey on Feb. 22, 1999 do hereby state that under requirements of P.A. 74, Michigan P.A. of 1970, the corner points mentioned in lines 1 and 2 above were in conformance with regulations and rules therefore as required in the current manual of survey instructions of the United States Department of the Interior, Bureau of Land Management or by a decree of a Court of Law and /or that the corner points mentioned in lines 3, 4 and 5 above were in conformance with the rules of the Michigan Board of Land Surveyors or by a Decree of a Court of Law; established, re-established, monumented, recovered, found as expressed below:

NOTE: Not more than 2 corners, all in the same town and range, may be recorded on this certificate.

A	B	C	D	E	F	G	H	I	J	K	L	M
1												
2	6		5		4		3		2		1	
3												
4	7		8		9		10		11		12	
5												
6	18		17		16		15		14		13	
7												
8	19		20		21		22		23		24	
9												
10	30		29		28		27		26		25	
11												
12	31		32		33		34		35		36	
13												

A. Description of original monument and accessories and/or subsequent restoration:

J-2	1837	GLO	Cathcart	Set Post
	1952	Williams & Works		Set Iron
	1988	LCRC #4548	Hackbardt	1 1/2" Iron
	1993	LCRC #6814	W. Glaza	Set Kent County Monument

P.A. 345 1990 KENT COUNTY
PEER APPROVED 2/25/99
CHAIRMAN Wallace E. Glaza

The position of this corner was previously approved by the Kent County Remonumentation Peer Group, monumented by Wallace E. Glaza on 8-17-93 and was recorded per LCRC #6814.

B. Description of corner evidence found and/or method applied in restoring or reestablishing corner:

J-2 Found Kent County Monument (Harrison) per witnesses from above LCRC as set by Wallace E. Glaza in place of the Iron he found. Said Iron checks with Williams & Works information and LCRC #4548

LCRC #6814

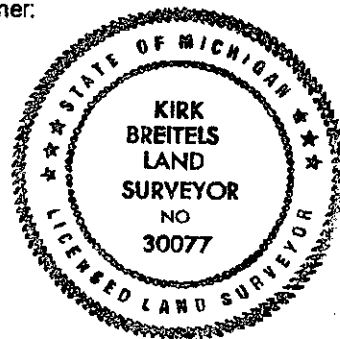
Nail & Remon. tag N. side 24" Oak	N90°E	50.81'
Nail & Remon. tag NE side 12" Maple	S30°E	20.37'
Nail & Remon. tag E. side 14" Oak	S00°E	35.80'
Nail & Remon. tag S. side 12" Maple	S90°W	24.49'
Water edge of Middle Lake	N00°E	40' ±

The selected location is accepted by me and is generally accepted by professional surveyors as the best available evidence of the position of the corner.

C. Description of monument for corner and accessories established to perpetuate locating the position of the corner:

J-2 Standard Kent County Monument

Nail & KC Remon. tag S. side 12" Maple	S90°W	24.46'
Nail & KC Remon. tag N. side 12" Maple	S75°E	12.66'
Nail & KC Remon. tag E. side 8" Beech	S25°E	52.71'
Nail & KC Remon. tag SE side 10" Pine	S50°W	42.05'
Waters edge of Middle Lake is North		40' ±



Signed by Kirk Breitels
Surveyor's Michigan License No. 30077

Date 2/25/99