

MAY 22 2000

57.00
2.00

SECTION KENT COUNTY REMONUMENTATION MAINTENANCE

LAND CORNER RECORDATION CERTIFICATE
Filing Requirement of Act 74, Mich. P.A. 1970

REG. OF DEEDS

Seq 2

STATE OF MICHIGAN
COUNTY OF KENT
RECEIVED FOR RECORD
1999 NOV -4 AM 8:35

For corners in

| KENT COUNTY (County) | Located In: | Corner Code # |
|---------------------------------------|--|---------------|
| 1. Public Land Survey | T <u>10N</u> R <u>11W</u> | <u>E.9</u> |
| | T <u> </u> R <u> </u> | <u> </u> |
| | T <u> </u> R <u> </u> | <u> </u> |
| | T <u> </u> R <u> </u> | <u> </u> |
| 2. Property Controlling in Section | S <u> </u> T <u> </u> R <u> </u> | <u> </u> |
| | S <u> </u> T <u> </u> R <u> </u> | <u> </u> |
| 3. Miscellaneous Property in Sec. | S <u> </u> T <u> </u> R <u> </u> | <u> </u> |
| | S <u> </u> T <u> </u> R <u> </u> | <u> </u> |

11459

Register of Deeds Stamp & File Number

- 4. Lot No. _____, Recorded Plat _____
- 5. Private Claims _____

I, Kirk Breitel, in a field survey on Aug. 27, 19 99 do hereby state that under requirements of P.A. 74, Michigan P.A. of 1970, the corner points mentioned in lines 1 and 2 above were in conformance with regulations and rules therefore as required in the current manual of survey instructions of the United States Department of the Interior, Bureau of Land Management or by a decree of a Court of Law and/or that the corner points mentioned in lines 3, 4 and 5 above were in conformance with the rules of the Michigan Board of Land Surveyors or by a Decree of a Court of Law; established, re-established, monumented, recovered, found as expressed below:

NOTE: Not more than 2 corners, all in the same town and range, may be recorded on this certificate.

| | | | | | | | | | | | | | |
|----|---|----|---|----|---|----|---|----|---|----|---|----|---|
| 1 | A | B | C | D | E | F | G | H | I | J | K | L | M |
| 2 | | 6 | | 5 | | 4 | | 3 | | 2 | | 1 | |
| 3 | | | | | | | | | | | | | |
| 4 | | 7 | | 8 | | 9 | | 10 | | 11 | | 12 | |
| 5 | | | | | | | | | | | | | |
| 6 | | 18 | | 17 | | 16 | | 15 | | 14 | | 13 | |
| 7 | | | | | | | | | | | | | |
| 8 | | 19 | | 20 | | 21 | | 22 | | 23 | | 24 | |
| 9 | | | | | | | | | | | | | |
| 10 | | 30 | | 29 | | 28 | | 27 | | 26 | | 25 | |
| 11 | | | | | | | | | | | | | |
| 12 | | 31 | | 32 | | 33 | | 34 | | 35 | | 36 | |
| 13 | | | | | | | | | | | | | |

A. Description of original monument and accessories and/or subsequent restoration:

- F-9 Kent County Monument, LCRC #8397
 - Nail & KC Remon. tag E. side 30" Maple (dead) S00°E 33.43'
 - Nail & KC Remon. tag N. side P. Pole S55°E 76.53'
 - Nail & KC Remon. tag E. side P. Pole N35°W 196.64'
 - Nail & KC Remon. tag E. side P. Pole S05°W 23.74'
 - Nail & KC Remon. tag W. side P. Pole N15°E 155.66'
 - On C/L E-W gravel

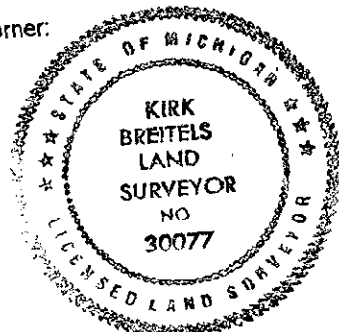
P.A. 845 1999 KENT COUNTY
PEER APPROVED 4/27/99
CHAIRMAN Harry Huber

B. Description of corner evidence found and/or method applied in restoring or reestablishing corner:

- F-9 AFTER ROAD CONSTRUCTION, found BROKEN Kent County Monument 22" under pavement. Set Kent County Monument (Harrison) in Mon. Box on top of old monument at the intersection of the remaining witnesses.
 - Fd. Nail & KC Remon. E. side 30" Maple (dead) S00°E 33.45'
 - Fd. Nail & KC Remon. N. side P. Pole S55°E 76.53'
 - Fd. Nail & KC Remon. E. side P. Pole N35°W 196.60'
 - Fd. Nail & KC Remon. E. side P. Pole S05°W 23.74'
 - Fd. Nail & KC Remon. W. side P. Pole N15°E 155.42'

C. Description of monument for corner and accessories established to perpetuate locating the position of the corner:

- F-9 Standard Kent County Monument in Mon. Box
 - Nail & KC Remon. tag E. side 30" Maple (dead) S00°E 33.45'
 - Nail & KC Remon. tag N. side P. Pole S55°E 76.53'
 - Nail & KC Remon. tag E. side P. Pole N35°W 196.64'
 - Nail & KC Remon. tag E. side P. Pole S05°W 23.74'
 - Nail & KC Remon. tag W. side P. Pole N15°E 155.42'
 - On C/L E-W asphalt road ±



Signed by Kirk Breitel
Surveyor's Michigan License No. 30077

Date 10/28/99