

\$7.00
\$2.00

MAY 22 2000

KENT COUNTY REMONUMENTATION

SECTION

LAND CORNER RECORDATION CERTIFICATE
Filing Requirement of Act 74, Mich. P.A. 1970

Seg-2

For corners in
KENT COUNTY
(County)

Located In:	Corner Code #
TION R 11W	Solon Twp.
T R	F-2
T R	
T R	
T R	
S T R	
S T R	
S T R	
S T R	

- 1. Public Land Survey
- 2. Property Controlling In Section
- 3. Miscellaneous Property in Sec.

STATE OF MICHIGAN
COUNTY OF KENT
RECEIVED FOR RECORD

1999 MAR 24 AM 8:00

REG. OF DEEDS

11086

Register of Deeds Stamp & File Number

4. Lot No. _____, Recorded Plat _____
5. Private Claims _____

	A	B	C	D	E	F	G	H	I	J	K	L	M
1													
2	6			5		4		3		2		1	
3													
4	7			8		9		10		11		12	
5													
6	10			17		16		15		14		13	
7													
8	19			20		21		22		23		24	
9													
10	30			29		28		27		26		25	
11													
12	31			32		33		34		35		36	
13													

I, Kirk Breitels, in a field survey on Jan. 20, 1999 do hereby state that under requirements of P.A. 74, Michigan P.A. of 1970, the corner points mentioned in lines 1 and 2 above were in conformance with regulations and rules therefore as required in the current manual of survey instructions of the United States Department of the Interior, Bureau of Land Management or by a decree of a Court of Law and/or that the corner points mentioned in lines 3, 4 and 5 above were in conformance with the rules of the Michigan Board of Land Surveyors or by a Decree of a Court of Law; established, re-established, monumented, recovered, found as expressed below:

NOTE: Not more than 2 corners, all in the same town and range, may be recorded on this certificate.

A. Description of original monument and accessories and/or subsequent restoration:

F-2 1837	GLO	Cathcart	Not Set
	Kent Co. Wits		No information
	Williams & Works		No information
1993	LCRC #6805	W. Glaza	Set Kent County Monument

P.A. 345 1990 KENT COUNTY
PEER APPROVED 2/25/99
CHAIRMAN Harvey Huber

The position of this corner was previously approved by the Kent County Remonumentation Peer Group, monumented by Wallace E. Glaza on 8-9-93 and was recorded per LCRC #6805.

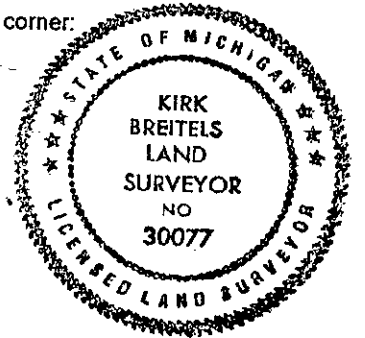
B. Description of corner evidence found and/or method applied in restoring or reestablishing corner:

F-2 Found Kent County Monument (Harrison) per witnesses from above LCRC as set by Wallace E. Glaza (at the Intersection of 1/4 lines).
LCRC #6805
Nail & Remon. tag W. side 12" Oak N16°W 27.06
Nail & Remon. tag N. side 18" Maple S89°E 69.00'
Nail & Remon. tag W. side 6" Hickory S00°W 64.54'
Nail & Remon. tag SE side 12" Willow S52°W 34.50'

The selected location is accepted by me and is generally accepted by professional surveyors as the best available evidence of the position of the corner.

C. Description of monument for corner and accessories established to perpetuate locating the position of the corner:

F-2 Standard Kent County Monument
Nail & KC Remon. tag W. side 14" Oak N16°W 27.04'
Nail & KC Remon. tag N. side 20" Hickory S89°E 68.94'
Nail & KC Remon. tag W. side 8" Hickory S00°W 64.47'
Nail & KC Remon. tag SE side 14" Willow S52°W 34.50'
On N. edge 2 track running NE-SW
C/L 2 track N-S is West 10'



Signed by Kirk Breitels
Surveyor's Michigan License No. 30077

Date 2/25/99