

SURVEY & REMONUMENTATION

\$7.00
\$2.00

MAY 22 2000

KENT COUNTY REMONUMENTATION

SECTION

LAND CORNER RECORDATION CERTIFICATE
Filing Requirement of Act 74, Mich. P.A. 1970

Seg. 2
"other" corner #2
1999 JUL -9 AM 11:19
RECEIVED FOR RECORD
STATE OF MICHIGAN
COUNTY OF KENT

For corners in
KENT COUNTY
(County)

Located In: Corner Code #

- 1. Public Land Survey T R
- 2. Property Controlling in Section S 4 TION R 11W Wit. Mon. on N-S 1/4 line Solon Twp.
- 3. Miscellaneous Property in Sec. S T R

11229
Register of Deeds Stamp & File Number

- 4. Lot No. _____, Recorded Plat _____
- 5. Private Claims _____

I, Kirk Breitels, in a field survey on June 10, 1999 do hereby state that under requirements of P.A. 74, Michigan P.A. of 1970, the corner points mentioned in lines 1 and 2 above were in conformance with regulations and rules therefore as required in the current manual of survey instructions of the United States Department of the Interior, Bureau of Land Management or by a decree of a Court of Law and for that the corner points mentioned in lines 3, 4 and 5 above were in conformance with the rules of the Michigan Board of Land Surveyors or by a Decree of a Court of Law; established, re-established, monumented, recovered, found as expressed below:

NOTE: Not more than 2 corners, all in the same town and range, may be recorded on this certificate.

A	B	C	D	E	F	G	H	I	J	K	L	M
1												
2	6		5		4		3		2		1	
3												
4	7		8		9		10		11		12	
5												
6	18		17		16		15		14		13	
7												
8	19		20		21		22		23		24	
9												
10	30		29		28		27		26		25	
11												
12	31		32		33		34		35		36	
13												

A. Description of original monument and accessories and/or subsequent restoration:

1837 GLO Cathcart Not Set
1993 LCRC #6802 W. Glaza Set Kent Co. Witness Monument on N-S 1/4 line between mathematical North 1/4 corner and Central 1/4 corner.

The position of this corner was previously approved by the Kent County Remonumentation Peer Group, as monumented by Wallace E. Glaza on 8-9-93 and was recorded per LCRC #6803

B. Description of corner evidence found and/or method applied in restoring or reestablishing corner:

Found Kent Co. Witness Monument per witnesses of above LCRC as set by Wallace C. Glaza.

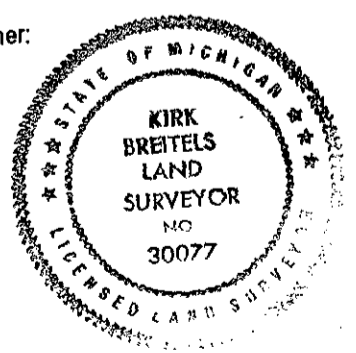
- Nail & KC Remon. tag N. side 30" Maple N70°E 9.44'
- Nail & KC Remon. tag SE side 14" Pine S50°W 14.34'
- Nail & KC Remon. tag E. side 28" Pine S20°W 17.43'
- Nail & KC Remon. tag E. side 18" Beech S30°W 45.42'
- N-S fence is East 1.5' ±
- Waters edge of Gilbert Lake is 7' ± North and 10' ± West

P.A. 345 1990 KENT COUNTY
PEER APPROVED 6/24/99
CHAIRMAN [Signature]

The above location is accepted by me and is generally accepted by professional surveyors as the best available evidence of the position of the Witness Corner.

C. Description of monument for corner and accessories established to perpetuate locating the position of the corner:

- Kent County Witness Monument
- Nail & KC Remon. tag N. side 36" Maple N70°E 9.38'
- Nail & KC Remon. tag SE side 16" Pine S50°W 14.30'
- Nail & KC Remon. tag E. side 30" Pine S20°W 17.43'
- Nail & KC Remon. tag E. side 20" Beech S30°W 45.48'
- N-S fence is East 1.5' ±
- Water edge of Gilbert Lake today is 20' ± North and 30' ± West



Signed by [Signature]
Surveyor's Michigan License No. 30077

Date 6/24/99