

MAY 22 2000

KENT COUNTY REMONUMENTATION

SECTION LAND CORNER RECORDATION CERTIFICATE
Filing Requirement of Act 74, Mich. P.A. 1970

\$7.00
\$2.00

For corners in

KENT COUNTY
(County)

Located In:

Corner Code #

Tyrone Twp.

1. Public Land Survey

T10N R 12W

A-9

T R

T R

T R

T R

2. Property Controlling in Section

S T R

S T R

3. Miscellaneous Property in Sec.

S T R

S T R

REC. OF DEEDS

[Handwritten Signature]

STATE OF MICHIGAN
COUNTY OF KENT
RECEIVED FOR RECORD
1999 MAR 24 AM 9:00

11122
Register of Deeds Stamp & File Number

4. Lot No. _____, Recorded Plat _____
5. Private Claims _____

I, Kirk Breitels, in a field survey on Jan. 15, 19 99 do hereby state that under requirements of P.A. 74, Michigan P.A. of 1970, the corner points mentioned in lines 1 and 2 above were in conformance with regulations and rules therefore as required in the current manual of survey instructions of the United States Department of the Interior, Bureau of Land Management or by a decree of a Court of Law and/or that the corner points mentioned in lines 3, 4 and 5 above were in conformance with the rules of the Michigan Board of Land Surveyors or by a Decree of a Court of Law; established, re-established, monumented, recovered, found as expressed below:

NOTE: Not more than 2 corners, all in the same town and range, may be recorded on this certificate.

	A	B	C	D	E	F	G	H	I	J	K	L	M
1													
2	6		5		4		3		2		1		
3													
4	7		8		9		10		11		12		
5													
6	18		17		16		15		14		13		
7													
8	19		20		21		22		23		24		
9													
10	30		29		28		27		26		25		
11													
12	31		32		33		34		35		36		
13													

A. Description of original monument and accessories and/or subsequent restoration:

- A-9 1837 GLO Brookfield Set Post
- 1945 Williams & Works Iron
- 1958 Kent Co. Wits 1" Iron
- 1982 LCRC #3157 Hackbardt Boat Spike
- 1986 LCRC #4456 Kolehouse Set Kent County Monument
- 1994 LCRC #7548 J. Glaza Kent County Monument

P.A. 345 1990 KENT COUNTY
PEER APPROVED 2/25/99
CHAIRMAN *[Handwritten Signature]*

The position of this corner was previously approved by the Kent County Remonumentation Peer Group, monumented by Randy J. Kolehouse on 4-5-86 and was recorded per LCRC #4456.

B. Description of corner evidence found and/or method applied in restoring or reestablishing corner:

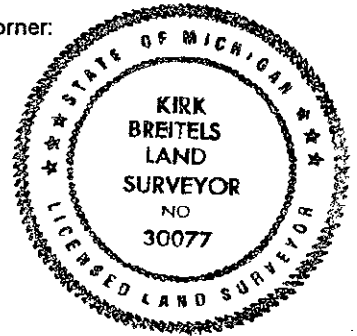
A-9 Found Kent County Monument (Harrison) per witnesses from above LCRC as set by Randy J. Kolehouse using 1945 Williams & Works witnesses. Corner per LCRC #3157 is 2' West.

LCRC #4456	LCRC #7548
NW building corner S35°E 80.78'	NW corner concrete building S35°E 80.78'
Nail & Remon. tag P. Pole N40°E 37.10'	Nail & Remon. tag P. Pole N40°E 37.10'
Nail & Remon. tag P. Pole N40°W 51.61'	Nail & Remon. tag P. Pole N40°W 51.61'
Nail & Remon. tag P. Pole S35°W 46.39'	Nail & Remon. tag P. Pole S35°W 46.39'
C/L Manhole N45°W 2.75'	C/L Manhole N45°W 2.75'
Boat Spike W. 2.0' PK Nail 0.8' N. & 1.35' W.	Boat Spike W. 2' PK Nail 0.8' N. & 1.35' W.

The selected location is accepted by me and is generally accepted by professional surveyors as the best available evidence of the position of the original corner.

C. Description of monument for corner and accessories established to perpetuate locating the position of the corner:

- A-9 Standard Kent County Monument
- NW corner concrete building S335°E 80.78'
- Nail & KC Remon. tag NW side P. Pole N40°E 37.10'
- Nail & KC Remon. tag NE side P. Pole N40°W 51.61'
- Nail & KC Remon. tag SE side P. Pole S35°W 46.39'
- C/L Manhole N45°W 2.75'



Signed by *[Handwritten Signature]*
Surveyor's Michigan License No. 30077

Date 2/25/99