

MAY 22 2000

KENT COUNTY REMONUMENTATION

SECTION LAND CORNER RECORDATION CERTIFICATE
Filing Requirement of Act 74, Mich. P.A. 1970

\$7.00
\$2.00

STATE OF MICHIGAN
COUNTY OF KENT
RECEIVED FOR RECORD
1999 MAR 24 AM 8:00
REG. OF DEEDS

11123

Register of Deeds Stamp & File Number

For corners in

KENT COUNTY

(County)

Located In:

Corner Code #

Tyrone Twp.

1. Public Land Survey

T 10N R 12W

A-10

T R

T R

T R

T R

2. Property Controlling in Section

S T R

S T R

3. Miscellaneous Property in Sec.

S T R

S T R

4. Lot No. , Recorded Plat

5. Private Claims

Grid table with columns A-M and rows 1-13. Cell 10,3 contains a dot.

I, Kirk Breitels, in a field survey on Feb. 11, 19 99 do hereby state that under requirements of P.A. 74, Michigan P.A. of 1970, the corner points mentioned in lines 1 and 2 above were in conformance with regulations and rules therefore as required in the current manual of survey instructions of the United States Department of the Interior, Bureau of Land Management or by a decree of a Court of Law and/or that the corner points mentioned in lines 3, 4 and 5 above were in conformance with the rules of the Michigan Board of Land Surveyors or by a Decree of a Court of Law; established, re-established, monumented, recovered, found as expressed below:

NOTE: Not more than 2 corners, all in the same town and range, may be recorded on this certificate.

A. Description of original monument and accessories and/or subsequent restoration:

A-10 1837 GLO Brookfield Set Post
1931-61 Williams & Works Large Iron - "T" Iron over Large Iron
1958 Kent Co. Wits 3/4" Iron
1982 Muskegon Co. Lewandowski Set Muskegon County Surveyor Monument
1984 LCRC #3879 Kolehouse Found Muskegon County Surveyor Monument
1994 LCRC #7538 J. Glaza Found Harrison Monument - no cap - place Kent Co. cap on monument
The position of this corner was previously approved by the Kent County Remonumentation Peer Group, found and verified by Randy J. Kolehouse on 8-11-84 and was recorded per LCRC #3879.

P.A. 345 1990 KENT COUNTY
PEER APPROVED 2/25/99
CHAIRMAN Randy Kolehouse

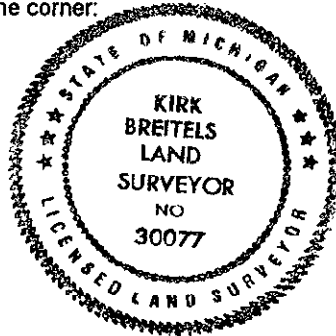
B. Description of corner evidence found and/or method applied in restoring or reestablishing corner:

A-10 Found Kent County Monument (Harrison) per witnesses from above LCRC as found by Randy J. Kolehouse. Said Monument checks with Williams & Works information and Kent Co. Wits.
LCRC #3879 LCRC #7538
Nail & Remon. tag 12" Elm S25°W 130.35' Nail & Remon. tag 18" Elm S11°W 130.17'
Nail & Remon. tag P. Pole N50°E 88.92' Nail & Remon. tag P. Pole N50°E 88.92'
C/L steel "T" fence post N30°W 72.40' Nail & Remon. tag 7" Twin Elm. N26°W 41.93'
In C/L BT road (Kenowa Ave.) N-S Nail & Remon. tag P. Pole S13°E 310.20'
In C/L bit. road N-S

The selected location is accepted by me and is generally accepted by professional surveyors as the best available evidence of the position of the original corner.

C. Description of monument for corner and accessories established to perpetuate locating the position of the corner:

A-10 Standard Kent County Monument
Nail & KC Remon. tag E. side 20" Elm S11°W 130.20'
Nail & KC Remon. tag NW side P. Pole N50°E 89.04'
Nail & KC Remon. tag NE side Twin 9" Elm N26°W 41.91'
Nail & KC Remon. tag W, side P. Pole S13°E 310.20'
In C/L N-S asphalt road



Signed by [Signature]
Surveyor's Michigan License No. 30077

Date 2/25/99