

SURVEY & REMONUMENTATION

\$7.00
\$2.00

MAR 08 1999

KENT COUNTY REMONUMENTATION

LAND CORNER RECORDATION CERTIFICATE
Filing Requirement of Act 74, Mich. P.A. 1970

For corners in SECTION

KENT COUNTY

(County)

Located In:

Corner Code #

1. Public Land Survey

T 9N R 12W A-1
T R Common with
T10N R 12W A-13

2. Property Controlling in Section

S T R
S T R
S T R
S T R

3. Miscellaneous Property in Sec.

4. Lot No. _____, Recorded Plat _____
5. Private Claims _____

REG. OF DEEDS

Luci Bond

99 MAR -5 AM 8:27

STATE OF MICHIGAN
COUNTY OF KENT
RECORDED IN RECORD

10421

Register of Deeds Stamp & File Number

I, Kirk Breitels, in a field survey on Jan. 20, 1998 do hereby state that under requirements of P.A. 74, Michigan P.A. of 1970, the corner points mentioned in lines 1 and 2 above were in conformance with regulations and rules therefore as required in the current manual of survey instructions of the United States Department of the Interior, Bureau of Land Management or by a decree of a Court of Law and/or that the corner points mentioned in lines 3, 4 and 5 above were in conformance with the rules of the Michigan Board of Land Surveyors or by a Decree of a Court of Law; established, re-established, monumented, recovered, found as expressed below:

NOTE: Not more than 2 corners, all in the same town and range, may be recorded on this certificate.

1	A	B	C	D	E	F	G	H	I	J	K	L	M
2	6		5		4		3		2		1		
3													
4	7		8		9		10		11		12		
5													
6	10		17		16		15		14		13		
7													
8	19		20		21		22		23		24		
9													
10	30		29		28		27		26		25		
11													
12	31		32		33		34		35		36		
13													

A. Description of original monument and accessories and/or subsequent restoration:

A-1 1837 GLO Brookfield Set Post
1959 Kent Co. Wits 1" Iron
1977 LCRC #1115 Nederveld 3/4" Iron
1980 LCRC #1503 Merdzinski Set Kent County Monument
1994 LCRC #7571 J. Glaza Kent County Monument

P.A. 945 1999 KENT COUNTY
PEER APPROVED 2/19/98
CHAIRMAN Harry Huber

The position of this corner was previously approved by the Kent County Remonumentation Peer Group, monumented by John A. Merdzinski on 12-9-80 and was recorded per LCRC #1503.

B. Description of corner evidence found and/or method applied in restoring or reestablishing corner:

A-1 Found Kent County Monument (Harrison) per witnesses from above LCRC as set by John A. Merdzinski in place of the 3/4" Iron in a 2" Iron over a 3/4" Iron he found. All Irons check with Kent Co. Wits. and LCRC #1115.

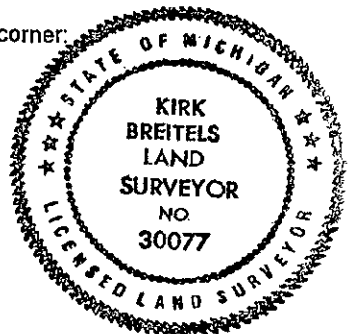
LCRC #1503	SE cor. headwall N60°W 57.41'	LCRC #7571	SE corner headwall N60°W 57.48'
	NE cor. headwall S80°W 51.92'		NE corner headwall S80°W 51.92'
	C/L 4" Willow S20°W 105.78'		Nail & Remon. tag 10" Box Elder N35°E 106.33'
	SE cor. porch (#34) fnd. S65°W 230.69'		C/L MB phone pad S75°E 109.95'
	SW cor. conc base MBT Box S70°E 73.82'		1' S. of bit. rd. E. and 8' W. of bit. rd. N-S
	SW cor. house (#13232) fnd. N35°E 229.12'		7' S. of bit. rd. W.

The selected location is accepted by me and is generally accepted by professional surveyors as the best available evidence of the position of the original corner.

C. Description of monument for corner and accessories established to perpetuate locating the position of the corner:

A-1 Standard Kent County Monument

SE corner of headwall	N60°W 57.48'
NE corner of headwall	S80°W 51.92'
Nail & KC Remon. tag E. side 12" Box Elder	N35°E 106.24'
C/L top of Tele. Box	S75°E 109.95'
1' S. of bit. rd. to E.	
8' W. of bit. rd. N-S	
7' S. of bit. rd. E.	



Signed by Kirk Breitels
Surveyor's Michigan License No. 30077

Date 2/19/98