

MAY 22 2000

KENT COUNTY REMONUMENTATION

SECTION LAND CORNER RECORDATION CERTIFICATE
Filing Requirement of Act 74, Mich. P.A. 1970

For corners in KENT COUNTY (County)

Table with columns: Located In, Corner Code #, Tyrone Twp. B-7. Rows for Public Land Survey, Property Controlling in Section, Miscellaneous Property in Sec.

REG. OF DEEDS

Handwritten signature

STATE OF MICHIGAN COUNTY OF KENT RECEIVED FOR RECORD 1999 MAR 24 AM 8:00

11128

Register of Deeds Stamp & File Number

4. Lot No. , Recorded Plat
5. Private Claims

Kirk Breitels in a field survey on Jan. 25, 1999 do hereby state that under requirements of P.A. 74, Michigan P.A. of 1970, the corner points mentioned in lines 1 and 2 above were in conformance with regulations and rules therefore as required in the current manual of survey instructions of the United States Department of the Interior, Bureau of Land Management or by a decree of a Court of Law and/or that the corner points mentioned in lines 3, 4 and 5 above were in conformance with the rules of the Michigan Board of Land Surveyors or by a Decree of a Court of Law; established, re-established, monumented, recovered, found as expressed below:

Grid table with columns A-M and rows 1-13. Cell (7, B) contains a black dot.

NOTE: Not more than 2 corners, all in the same town and range, may be recorded on this certificate.

A. Description of original monument and accessories and/or subsequent restoration:

Table with columns: Date, Description, Location, Monument Type. Rows for 1837, 1972, 1981, 1982, 1994.

P.A. 345 1990 KENT COUNTY PEER APPROVED 2/25/99 CHAIRMAN [Signature]

The position of this corner was previously approved by the Kent County Remonumentation Peer Group, monumented by Thomas C. Starr on 8-2-82 and was recorded per LCRC #3014.

B. Description of corner evidence found and/or method applied in restoring or reestablishing corner:

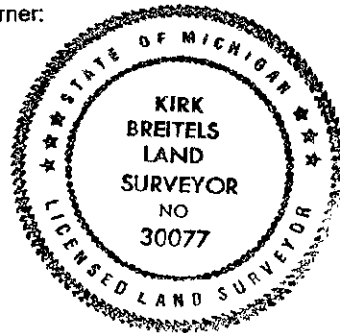
B-7 Found Kent County Monument (Harrison) per witnesses from above LCRC as set by Thomas C. Starr in place of the 3/4" Iron Pipe he found. Said Iron Pipe checks with Kent Co. Wits. and LCRC #2068

Table with columns: Evidence Description, Distance, Direction. Rows for various monuments and bearings.

The selected location is accepted by me and is generally accepted by professional surveyors as the best available evidence of the position of the original corner.

C. Description of monument for corner and accessories established to perpetuate locating the position of the corner:

Table with columns: Monument Description, Distance, Direction. Rows for Standard Kent County Monument details.



Signed by [Signature] Surveyor's Michigan License No. 30077

Date 2/25/99