

SURVEY & REMONUMENTATION

KENT COUNTY REMONUMENTATION

STATE OF MICHIGAN
COUNTY OF KENT
RECEIVED FOR RECORD

98 JUL 14 AM 9:55

\$7.00
\$2.00

MAR 08 1999

LAND CORNER RECORDATION CERTIFICATE
Filing Requirement of Act 74, Mich. P.A. 1970

W. J. Bond
REG. OF DEEDS

For corners in
KENT COUNTY

SECTION

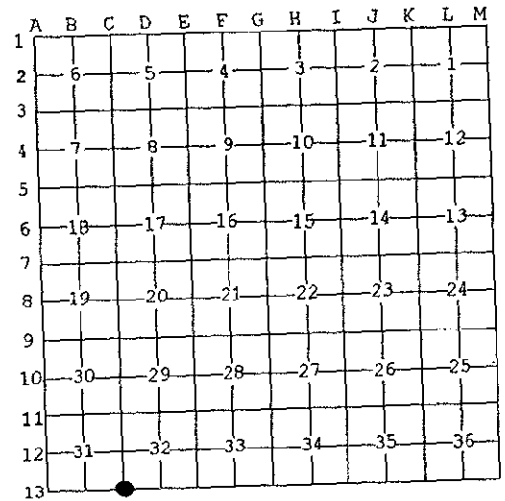
Located In: Corner Code #

1. Public Land Survey	T 10N R 12W	C-13
	T R	
	T R	
	T R	
2. Property Controlling in Section	S T R	
	S T R	
3. Miscellaneous Property in Sec.	S T R	
	S T R	

10660
Register of Deeds Stamp & File Number

4. Lot No. _____, Recorded Plat _____
5. Private Claims _____

I, Kirk Breitels, in a field survey on May 5, 1998 do hereby state that under requirements of P.A. 74, Michigan P.A. of 1970, the corner points mentioned in lines 1 and 2 above were in conformance with regulations and rules therefore as required in the current manual of survey instructions of the United States Department of the Interior, Bureau of Land Management or by a decree of a Court of Law and/or that the corner points mentioned in lines 3, 4 and 5 above were in conformance with the rules of the Michigan Board of Land Surveyors or by a Decree of a Court of Law; established, re-established, monumented, recovered, found as expressed below:



NOTE: Not more than 2 corners, all in the same town and range, may be recorded on this certificate.

A. Description of original monument and accessories and/or subsequent restoration:

C-13 1837	GLO	Brookfield	Set Post
	Kent Co. Wits		Iron
1975	LCRC #895	Bonnema	3/4" Iron in Mon. Box
1980	LCRC #1485	Merdzinski	Set Kent County Monument in Mon. Box
1994	LCRC #7524	J. Glaza	Kent County Monument

P.A. 345 1990 KENT COUNTY
PEER APPROVED 6/25/98
CHAIRMAN *Harry Huber*

The position of this corner was previously approved by the Kent County Remonumentation Peer Group, monumented by John A. Merdzinski on 11-28-80 and was recorded per LCRC #1485.

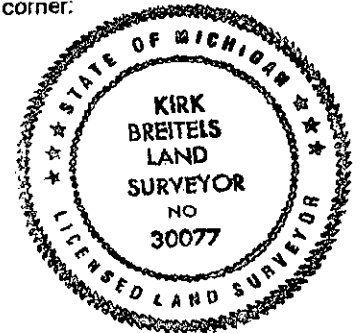
B. Description of corner evidence found and/or method applied in restoring or reestablishing corner:

C-13 Found Kent County Monument (Harrison) per witnesses from above LCRC as set by John A. Merdzinski in place of the 1" Iron he found inside a Mon. Box. Said Iron checks with Kent Co. Wit. and LCRC #895.			
LCRC #1485		LCRC #7524	
Nail & Remon. tag 26" Poplar	N45°E 89.15'	Nail & Remon. tag 36" Poplar	N35°E 89.01'
Nail & Remon. tag 8" Elm	S05°E 143.7'	Nail & Remon. tag P. Pole	S24°W 120.95'
Nail & Remon. tag P. Pole	S30°W 121.08'	"+" on conc. culv.	N69°W 80.45'
"+" on culv. N60°W 80.34'	"+" on culv. S80°W 79.21'	"+" on conc. culv.	S70°W 79.21'
Iron in Mon. Box	West 15.33'	KC Mon. (C-1, T9N, R12W)	West 15.33'
SW cor. frame hse.	NS0°E 124.54'	SW corner house	N57°E 140.05'

The selected location is accepted by me and is generally accepted by professional surveyors as the best available evidence of the position of the original corner.

C. Description of monument for corner and accessories established to perpetuate locating the position of the corner:

C-13 Standard Kent County Monument	
Nail & KC Remon. tag SE side 36" Poplar	N35°E 89.23'
Nail & KC Remon. tag W. side P. Pole	S24°W 120.95'
Nail & KC Remon. tag W. side P. Pole	N10°E 192.58'
Nail & KC Remon. tag W. side P. Pole	N10°W 236.77'
"+" top of concrete culvert	N69°W 80.51'
"+" top of concrete culvert	S70°W 79.02'
Kent Co. Mon. (C-1, T9N, R12W)	West 15.36'
C/L Fruit Ridge Ave. is West 8'	



Signed by *Kirk Breitels*
Surveyor's Michigan License No. 30077

Date 6/25/98