

MAY 22 2000

KENT COUNTY REMONUMENTATION

SECTION

LAND CORNER RECORDATION CERTIFICATE
Filing Requirement of Act 74, Mich. P.A. 1970

For corners in

KENT COUNTY
(County)

Located In:

Corner Code #

Tyrone Twp.

1. Public Land Survey

T10N R 12W

C-9

2. Property Controlling in Section

S T R

3. Miscellaneous Property in Sec.

S T R

REG. OF DEEDS

[Signature]

STATE OF MICHIGAN
COUNTY OF KENT
RECEIVED FOR RECORD
1999 MAR 24 AM 8:01

11135

Register of Deeds Stamp & File Number

4. Lot No. _____, Recorded Plat _____
5. Private Claims _____

I, Kirk Breitels, in a field survey on Jan. 26, 1999 do hereby state that under requirements of P.A. 74, Michigan P.A. of 1970, the corner points mentioned in lines 1 and 2 above were in conformance with regulations and rules therefore as required in the current manual of survey instructions of the United States Department of the Interior, Bureau of Land Management or by a decree of a Court of Law and /or that the corner points mentioned in lines 3, 4 and 5 above were in conformance with the rules of the Michigan Board of Land Surveyors or by a Decree of a Court of Law; established, re-established, monumented, recovered, found as expressed below:

NOTE: Not more than 2 corners, all in the same town and range, may be recorded on this certificate.

A	B	C	D	E	F	G	H	I	J	K	L	M
1												
2	6		5		4		3		2		1	
3												
4	7		8		9		10		11		12	
5												
6	18		17		16		15		14		13	
7												
8	19		20		21		22		23		24	
9												
10	30		29		28		27		26		25	
11												
12	31		32		33		34		35		36	
13												

A. Description of original monument and accessories and/or subsequent restoration:

C-9	1837	GLO	Whitcomb	Set Post
	1962	Kent Co. Wits		Concrete Monument
	1981	LCRC #2079	Nederveld	3/4" Iron in Mon. Box
	1982	LCRC #3015	Starr	Set Kent County Monument in Mon. Box
	1994	LCRC #7576	J. Glaza	Kent County Monument

P.A. 345 1990 KENT COUNTY

PEER APPROVED 2/25/99
CHAIRMAN *[Signature]*

The position of this corner was previously approved by the Kent County Remonumentation Peer Group, monumented by Thomas C. Starr on 8-2-82 and was recorded per LCRC #3015.

B. Description of corner evidence found and/or method applied in restoring or reestablishing corner:

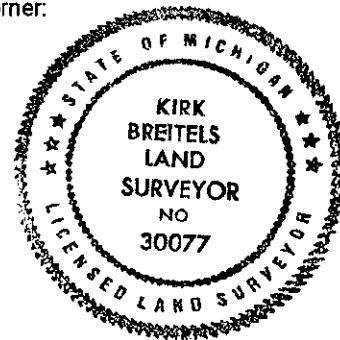
C-9 Found Kent County Monument (Harrison) per witnesses from above LCRC as set by Thomas E. Starr in place of the 3/4" Iron he found in a Mon. Box. Said Iron checks with Kent Co. Wits. and LCRC #2079.

LCRC #3015				LCRC #7576
Nail & Remon. tag 26" Spruce	S20°E	88.51'		Nail & Remon. tag 26" Spruce S20°E 88.51'
Nail & Remon. tag P. Pole	S45°W	81.27'		Nail & Remon. tag P. Pole S45°W 81.27'
Nail & Remon. tag P. Pole	N45°W	82.15'		Nail & Remon. tag P. Pole N45°W 82.15'
Nail & Remon. tag P. Pole	N60°E	118.88'		NW corner house foundation S50°E 120.33'
NW cor. house foundation	S50°E	120.33'		On C/L bit. road N-S
NW cor. gutter pan at N. end curb	N25°E	65.97'		1' N. of C/L bit. road E-W

The selected location is accepted by me and is generally accepted by professional surveyors as the best available evidence of the position of the original corner.

C. Description of monument for corner and accessories established to perpetuate locating the position of the corner:

C-9	Standard Kent County Monument in Mon. Box
	Nail & KC Remon. tag W. side 28" Spruce S20°E 88.48'
	Nail & KC Remon. tag SE side P. Pole S45°W 81.24'
	Nail & KC Remon. tag SW side P. Pole N45°W 82.15'
	Nail & KC Remon. tag SE side P. Pole N45°E 178.84'
	NW corner house foundation S50°E 120.27'



Signed by *[Signature]*
Surveyor's Michigan License No. 30077

Date 2/25/99