

\$7.00
\$2.00

MAY 22 2000

KENT COUNTY REMONUMENTATION

SECTION

LAND CORNER RECORDATION CERTIFICATE
Filing Requirement of Act 74, Mich. P.A. 1970

For corners in

KENT COUNTY
(County)

Located In:

Corner Code #

Tyrone Twp.

1. Public Land Survey

T 10N R 12W

D-3

T R

T R

T R

2. Property Controlling in Section

S T R

S T R

3. Miscellaneous Property in Sec.

S T R

S T R

4. Lot No. _____, Recorded Plat _____

5. Private Claims _____

STATE OF MICHIGAN
COUNTY OF KENT
RECEIVED FOR RECORD

1999 MAR 24 AM 9:01

REG. OF DEEDS

11138

Register of Deeds Stamp & File Number

I, Kirk Breitels, in a field survey on Jan. 15, 19 99 do hereby state that under requirements of P.A. 74, Michigan P.A. of 1970, the corner points mentioned in lines 1 and 2 above were in conformance with regulations and rules therefore as required in the current manual of survey instructions of the United States Department of the Interior, Bureau of Land Management or by a decree of a Court of Law and /or that the corner points mentioned in lines 3, 4 and 5 above were in conformance with the rules of the Michigan Board of Land Surveyors or by a Decree of a Court of Law; established, re-established, monumented, recovered, found as expressed below:

NOTE: Not more than 2 corners, all in the same town and range, may be recorded on this certificate.

A	B	C	D	E	F	G	H	I	J	K	L	M
1												
2	6		5		4		3		2		1	
3												
4	7		8		9		10		11		12	
5												
6	18		17		16		15		14		13	
7												
8	19		20		21		22		23		24	
9												
10	30		29		28		27		26		25	
11												
12	31		32		33		34		35		36	
13												

A. Description of original monument and accessories and/or subsequent restoration:

D-3 1837	GLO	Whitcomb	Set Post
1973	LCRC #537	Spicer	3/4" Iron in Mon. Box
1979	LCRC #1262	Campbell	3/4" Iron in Mon. Box
1982	LCRC #2645	Jonker	Set Kent County Monument in Mon. Box
1994	LCRC #7530	J. Glaza	Kent County Monument

P.A. 345 1990 KENT COUNTY
PEER APPROVED 2/25/99
CHAIRMAN *[Signature]*

The position of this corner was previously approved by the Kent County Remonumentation Peer Group, monumented by Robert J. Jonker on 2-4-82 and was recorded per LCRC #2645.

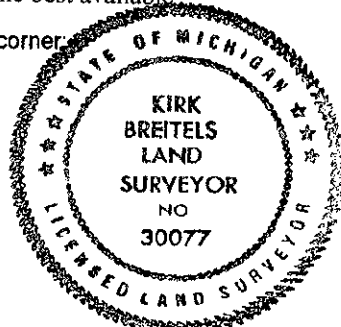
B. Description of corner evidence found and/or method applied in restoring or reestablishing corner:

D-3 Found Kent County Monument (Harrison) per witnesses from above LCRC as set by Robert J. Jonker in place of the 3/4" Iron he found in a Mon. Box. Said Iron checks with LCRC's #537 & #1262.	
LCRC #2645	LCRC #7530
Nail & Remon. tag P. Pole S10°W 27.75'	Nail & Remon. tag P. Pole S10°W 27.75'
Nail & Remon. tag P. Pole N40°E 107.77'	Nail & Remon. tag P. Pole N40°E 107.77'
Nail & Remon. tag P. Pole N25°W 91.57'	Nail & Remon. tag P. Pole N24°W 93.40'
Nail & Remon. tag 12" Elm S71°E 161.7'	Nail & Remon. tag P. Pole S00°E 28.04'
C/L E-W pavement is 1.5' N. m/l	C/L stop sign N16°W 47.20'
On C/L gravel road N. & tree row S.	

The selected location is accepted by me and is generally accepted by professional surveyors as the best available evidence of the position of the original corner.

C. Description of monument for corner and accessories established to perpetuate locating the position of the corner:

D-3 Standard Kent County Monument	
Nail & KC Remon. tag W. side stump P. Pole	S10°W 27.75'
Nail & KC Remon. tag NW side P. Pole	N40°E 107.80'
Nail & KC Remon. tag E. side P. Pole	N24°W 93.40'
Nail & KC Remon. tag E. side P. Pole	S00°E 28.04'
C/L stop sign	N16°W 47.20'
C/L E-W pavement is North 1.5' ±	
On C/L gravel road to North	
On tree row to South	



Signed by *[Signature]*
Surveyor's Michigan License No. 30077

Date 2/25/99