

MAY 22 2000

KENT COUNTY REMONUMENTATION

SECTION LAND CORNER RECORDATION CERTIFICATE Filing Requirement of Act 74, Mich. P.A. 1970

For corners in

KENT COUNTY (County)

Located In: Corner Code #

Tyrone Twp. D-4

- 1. Public Land Survey T 10NR 12W
2. Property Controlling in Section S T R
3. Miscellaneous Property in Sec. S T R

4. Lot No. , Recorded Plat
5. Private Claims

I, Kirk Breitels, in a field survey on Aug. 18, 1999 do hereby state that under requirements of P.A. 74, Michigan P.A. of 1970, the corner points mentioned in lines 1 and 2 above were in conformance with regulations and rules therefore as required in the current manual of survey instructions of the United States Department of the Interior, Bureau of Land Management or by a decree of a Court of Law and /or that the corner points mentioned in lines 3, 4 and 5 above were in conformance with the rules of the Michigan Board of Land Surveyors or by a Decree of a Court of Law; established, re-established, monumented, recovered, found as expressed below.

NOTE: Not more than 2 corners, all in the same town and range, may be recorded on this certificate.

A. Description of original monument and accessories and/or subsequent restoration:

D-4 1837 GLO Williams & Works Kent Co. Wils Not Set No information No information

P.A. 345 1990 KENT COUNTY PEER APPROVED 8/26/99 CHAIRMAN Harry Huber

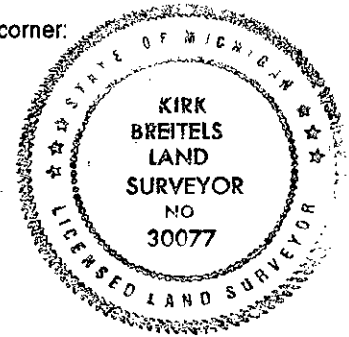
B. Description of corner evidence found and/or method applied in restoring or reestablishing corner:

D-4 Found Capped Rerod (Roosien) that is 0.2' S. & 0.3' E. from the intersection of 1/4 lines.

The Capped Rerod (Roosien) is accepted by me and is generally accepted by professional surveyors as the best available evidence of the position of the corner.

C. Description of monument for corner and accessories established to perpetuate locating the position of the corner:

D-4 Set Standard Kent County Monument in place of the Capped Rerod (Roosien)
Nail & KC Remon. tag E. side 48" Beech S00°E 38.07'
Nail & KC Remon. tag N. side 12" Maple S75°E 18.67'
Nail & KC Remon. tag W. side 12" Poplar N45°E 27.34'
Nail & KC Remon. tag W. side 6" Cherry N00°E 10.51'
Nail & KC Remon. tag S. side 6" Cherry S75°W 39.20'



Signed by [Signature] Surveyor's Michigan License No. 30077

Date 12/6/99

Grid table with columns A-M and rows 1-13. Cell (4, C) contains the number 8.

STATE OF MICHIGAN COUNTY OF KENT RECEIVED FOR RECORD 1999 DEC 15 AM 8:56

11602

Register of Deeds Stamp & File Number